



## Stockport

### Introduction

The Public Health Outcomes Framework [Healthy lives, healthy people: Improving outcomes and supporting transparency](#) sets out a vision for public health, desired outcomes and the indicators that will help us understand how well public health is being improved and protected. The framework concentrates on two high-level outcomes to be achieved across the public health system, and groups further indicators into four 'domains' that cover the full spectrum of public health. The outcomes reflect a focus not only on how long people live, but on how well they live at all stages of life.

This profile currently presents data for the first set of indicators at England and upper tier local authority levels, collated by Public Health England.

The profile allows you to:

- Compare your local authority against other authorities in the region
- Benchmark your local authority against the England value

Public Health Outcomes Framework baseline data will be revised and corrected in accordance with the [general DH statistical policy on revisions and corrections](#).

### Contents

#### Spine Charts

Overarching indicators	Page 2
Wider determinants of health	Page 3
Health improvement	Page 4
Health protection	Page 5
Healthcare and premature mortality	Page 6

#### Tartan Rugs

Overarching indicators	Page 9
Wider determinants of health	Page 10
Health improvement	Page 13
Health protection	Page 16
Healthcare and premature mortality	Page 18

#### Summary Charts

Overarching indicators	Page 22
Wider determinants of health	Page 24
Health improvement	Page 28
Health protection	Page 33
Healthcare and premature mortality	Page 36

#### Definitions

Page 42



© Crown Copyright and database rights 2013, Ordnance Survey 100016969  
OpenStreetMap contributors ODbL

# www.phoutcomes.info

Produced by Public Health England.

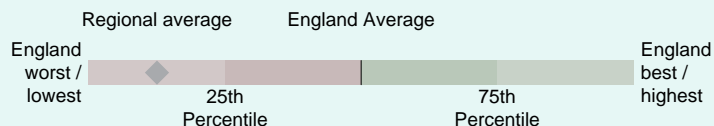
For enquiries please contact [phof.enquiries@phe.gov.uk](mailto:phof.enquiries@phe.gov.uk) or call us on 020 7654 8307

# Spine Charts

**Key**

Significance compared to goal / England average:

- Significantly worse
- Significantly lower
- Not significantly different
- Significantly higher
- Significantly better
- Significance not tested



## Overarching indicators

	Period	Local value	Eng. value	Eng. worst	Range	Eng. best
0.1i - Healthy life expectancy at birth (Male)	2010 - 12	67.0	63.4	52.5		70.0
0.1i - Healthy life expectancy at birth (Female)	2010 - 12	65.9	64.1	55.5		71.0
0.1ii - Life Expectancy at birth (Male)	2011 - 13	79.7	79.4	74.3		82.6
0.1ii - Life Expectancy at birth (Female)	2011 - 13	83.0	83.1	80.0		86.2
0.1ii - Life Expectancy at 65 (Male)	2011 - 13	19.2	18.7	16.0		21.1
0.1ii - Life Expectancy at 65 (Female)	2011 - 13	21.1	21.1	18.8		24.0
0.2i - Slope index of inequality in life expectancy at birth based on national deprivation deciles within England (Male)	2011 - 13		9.1			
0.2i - Slope index of inequality in life expectancy at birth based on national deprivation deciles within England (Female)	2011 - 13		6.9			
0.2ii - Number of upper tier local authorities for which the local slope index of inequality in life expectancy (as defined in 0.2iii) has decreased (Male)	2011 - 13		80			
0.2ii - Number of upper tier local authorities for which the local slope index of inequality in life expectancy (as defined in 0.2iii) has decreased (Female)	2011 - 13		73			
0.2iii - Slope index of inequality in life expectancy at birth within English local authorities, based on local deprivation deciles within each area (Male)	2011 - 13	10.5	-	2.4		17.3
0.2iii - Slope index of inequality in life expectancy at birth within English local authorities, based on local deprivation deciles within each area (Female)	2011 - 13	8.2	-	0.6		11.4
0.2iv - Gap in life expectancy at birth between each local authority and England as a whole (Male)	2011 - 13	0.3	0.0	-5.1		3.2
0.2iv - Gap in life expectancy at birth between each local authority and England as a whole (Female)	2011 - 13	-0.1	0.0	-3.1		3.1
0.2v - Slope index of inequality in healthy life expectancy at birth based on national deprivation deciles within England (Male)	2010 - 12		19.4			
0.2v - Slope index of inequality in healthy life expectancy at birth based on national deprivation deciles within England (Female)	2010 - 12		19.8			
0.2vii - Slope index of inequality in life expectancy at birth within English regions, based on regional deprivation deciles within each area (Male)	2011 - 13		-			
0.2vii - Slope index of inequality in life expectancy at birth within English regions, based on regional deprivation deciles within each area (Female)	2011 - 13		-			

## Wider determinants of health

	Period	Local value	Eng. value	Eng. worst	Range	Eng. best
1.01i - Children in poverty (all dependent children under 20)	2012	14.6	18.6	39.0		6.4
1.01ii - Children in poverty (under 16s)	2012	15.3	19.2	37.9		6.6
1.02i - School Readiness: The percentage of children achieving a good level of development at the end of reception	2013/14	62.1	60.4	41.2		75.3
1.02i - School Readiness: The percentage of children with free school meal status achieving a good level of development at the end of reception	2013/14	39.6	44.8	31.7		68.1
1.02ii - School Readiness: The percentage of Year 1 pupils achieving the expected level in the phonics screening check	2013/14	75.4	74.2	64.3		82.5
1.02ii - School Readiness: The percentage of Year 1 pupils with free school meal status achieving the expected level in the phonics screening check	2013/14	56.0	61.3	31.8		76.9
1.03 - Pupil absence	2012/13	5.02	5.26	6.31		4.36
1.04 - First time entrants to the youth justice system	2013	255	441	847		171
1.05 - 16-18 year olds not in education employment or training	2013	5.4	5.3	9.8		1.8
1.06i - Adults with a learning disability who live in stable and appropriate accommodation (Persons)	2013/14	89.1	74.8	47.7		94.5
1.06i - Adults with a learning disability who live in stable and appropriate accommodation (Male)	2013/14	90.1	74.5	46.2		94.9
1.06i - Adults with a learning disability who live in stable and appropriate accommodation (Female)	2013/14	87.7	75.3	50.0		94.0
1.06ii - % of adults in contact with secondary mental health services who live in stable and appropriate accommodation (Persons)	2013/14	47.2	60.9	12.6		93.3
1.06ii - % of adults in contact with secondary mental health services who live in stable and appropriate accommodation (Male)	2013/14	46.3	59.5	10.7		92.8
1.06ii - % of adults in contact with secondary mental health services who live in stable and appropriate accommodation (Female)	2013/14	48.1	62.5	15.2		94.2
1.07 - People in prison who have a mental illness or a significant mental illness	2012/13		4.35			
1.08i - Gap in the employment rate between those with a long-term health condition and the overall employment rate	2013/14	8.9	8.7	-2.5		24.2
1.08ii - Gap in the employment rate between those with a learning disability and the overall employment rate	2013/14	63.3	65.1	46.7		79.1
1.08iii - Gap in the employment rate for those in contact with secondary mental health services and the overall employment rate	2013/14	70.6	64.8	55.3		75.0
1.09i - Sickness absence - The percentage of employees who had at least one day off in the previous week	2010 - 12	2.5	2.5	4.6		0.8
1.09ii - Sickness absence - The percent of working days lost due to sickness absence	2010 - 12	1.4	1.6	3.1		0.4
1.10 - Killed and seriously injured (KSI) casualties on England's roads	2011 - 13	18.8	39.7	78.9		16.6
1.11 - Domestic Abuse	2012/13	27.7	18.8	5.6		30.2
1.12i - Violent crime (including sexual violence) - hospital admissions for violence	2010/11 - 12/13	76.7	57.6	167.8		9.3
1.12ii - Violent crime (including sexual violence) - violence offences per 1,000 population	2013/14	8.5	11.1	4.6		27.8
1.12iii - Violent crime (including sexual violence) - Rate of sexual offences per 1,000 population	2013/14	0.62	1.01	0.38		2.43
1.13i - Re-offending levels - percentage of offenders who re-offend	2012	22.0	25.9	19.9		35.6
1.13ii - Re-offending levels - average number of re-offences per offender	2012	0.65	0.77	0.52		1.27
1.14i - The rate of complaints about noise	2012/13	3.5	7.5	80.4		2.5
1.14ii - The percentage of the population exposed to road, rail and air transport noise of 65dB(A) or more, during the daytime	2011	5.4	5.2	0.8		20.8
1.14iii - The percentage of the population exposed to road, rail and air transport noise of 55 dB(A) or more during the night-time	2011	9.9	8.0	1.2		42.4

## Stockport

## Wider determinants of health continued

	Period	Local value	Eng. value	Eng. worst	Range	Eng. best
1.15i - Statutory homelessness - homelessness acceptances	2013/14	1.1	2.3	0.1		12.5
1.15ii - Statutory homelessness - households in temporary accommodation	2013/14	0.2	2.6	29.7		0.0
1.16 - Utilisation of outdoor space for exercise/health reasons	Mar 2013 - Feb 2014	17.5	17.1	0.3		30.8
1.17 - Fuel Poverty	2012	9.7	10.4	21.3		4.9
1.18i - Social Isolation: % of adult social care users who have as much social contact as they would like	2013/14	43.2	44.5	35.4		54.4
1.18ii - Social Isolation: % of adult carers who have as much social contact as they would like	2012/13	46.7	41.3	23.9		58.5
1.19i - Older people's perception of community safety - safe in local area during the day	2012/13		97.5			
1.19ii - Older people's perception of community safety - safe in local area after dark	2012/13		61.9			
1.19iii - Older people's perception of community safety - safe in own home at night	2012/13		94.3			

## Health improvement

	Period	Local value	Eng. value	Eng. worst	Range	Eng. best
2.01 - Low birth weight of term babies	2012	2.1	2.8	5.0		1.5
2.02i - Breastfeeding - Breastfeeding initiation	2013/14	73.7	73.9	36.6		93.0
2.02ii - Breastfeeding - Breastfeeding prevalence at 6-8 weeks after birth	2013/14	- x	-	19.4		77.4
2.03 - Smoking status at time of delivery	2013/14	12.2	12.0	27.5		1.9
2.04 - Under 18 conceptions	2012	26.8	27.7	52.0		14.2
2.04 - Under 18 conceptions: conceptions in those aged under 16	2012	6.0	5.6	15.8		2.0
2.06i - Excess weight in 4-5 and 10-11 year olds - 4-5 year olds	2013/14	21.1	22.5	29.5		15.9
2.06ii - Excess weight in 4-5 and 10-11 year olds - 10-11 year olds	2013/14	30.2	33.5	43.8		24.4
2.07i - Hospital admissions caused by unintentional and deliberate injuries in children (aged 0-14 years)	2012/13	127.9	103.8	191.3		61.7
2.07i - Hospital admissions caused by unintentional and deliberate injuries in children (aged 0-4 years)	2012/13	168.0	134.7	282.4		76.0
2.07ii - Hospital admissions caused by unintentional and deliberate injuries in young people (aged 15-24)	2012/13	157.2	130.7	277.3		63.8
2.08 - Emotional well-being of looked after children	2013/14	14.1	13.9	10.5		22.3
2.09ii - Smoking prevalence age 15 years - regular smokers	2013		8			
2.09iii - Smoking prevalence age 15 years - occasional smokers	2013		10			
2.12 - Excess Weight in Adults	2012	65.9	63.8	74.4		45.9
2.13i - Percentage of physically active and inactive adults - active adults	2013	54.7	55.6	43.4		66.3
2.13ii - Percentage of active and inactive adults - inactive adults	2013	29.6	28.9	39.2		16.3
2.14 - Smoking Prevalence	2013	14.7	18.4	29.4		10.5
2.14 - Smoking prevalence - routine & manual	2013	29.5	28.6	47.5		16.5
2.15i - Successful completion of drug treatment - opiate users	2013	8.8	7.8	3.5		15.8
2.15ii - Successful completion of drug treatment - non-opiate users	2013	38.6	37.7	7.6		60.2
2.16 - People entering prison with substance dependence issues who are previously not known to community treatment	2012/13	45.6	46.9	69.8		19.7
2.17 - Recorded diabetes	2013/14	5.85	6.21	3.69		8.66

Note: x - Value Missing

[www.phoutcomes.info](http://www.phoutcomes.info)

## Health improvement continued

	Period	Local value	Eng. value	Eng. worst	Range	Eng. best
2.18 - Alcohol related admissions to hospital - narrow definition (Persons)	2012/13	651	637	1121		365
2.18 - Alcohol related admissions to hospital - narrow definition (Male)	2012/13	857	829	1425		454
2.18 - Alcohol related admissions to hospital - narrow definition (Female)	2012/13	463	465	839		269
2.19 - Cancer diagnosed at early stage (Experimental Statistics)	2012	46.4	41.6	34.4		60.3
2.20i - Cancer screening coverage - breast cancer	2014	73.4	75.9	57.4		83.7
2.20ii - Cancer screening coverage - cervical cancer	2014	76.1	74.2	59.5		79.7
2.21i - Antenatal infectious disease screening – HIV coverage	2013/14		98.9			
2.21iii - Antenatal Sickle Cell and Thalassaemia Screening - coverage	2013/14		98.9			
2.21iv - Newborn bloodspot screening - coverage	2013/14	95.7 ^	93.5	81.9		99.9
2.21v - Newborn Hearing screening - Coverage	2013/14	98.8	98.5	92.7		99.9
2.21vii - Access to non-cancer screening programmes - diabetic retinopathy	2012/13	80.1 ^	79.1	66.0		94.8
2.21viii - Abdominal Aortic Aneurysm Screening	2013/14	97.7	95.9	39.3		100
2.22iii - Cumulative % of the eligible population aged 40-74 offered an NHS Health Check	2013/14	23.3	18.4	0.8		44.4
2.22iv - Cumulative % of the eligible population aged 40-74 offered an NHS Health Check who received an NHS Health Check	2013/14	79.5	49.0	14.6		100
2.22v - Cumulative % of the eligible population aged 40-74 who received an NHS Health check	2013/14	18.5	9.0	0.9		29.1
2.23i - Self-reported well-being - people with a low satisfaction score	2013/14	5.2	5.6	12.7		3.3
2.23ii - Self-reported well-being - people with a low worthwhile score	2013/14	- *	4.2	7.7		2.9
2.23iii - Self-reported well-being - people with a low happiness score	2013/14	9.2	9.7	15.0		5.8
2.23iv - Self-reported well-being - people with a high anxiety score	2013/14	20.9	20.0	29.3		9.3
2.23v - Average Warwick-Edinburgh Mental Well-Being Scale (WEMWBS) score	2010 - 12		37.7			
2.24i - Injuries due to falls in people aged 65 and over (Persons)	2012/13	2353	2011	3508		1178
2.24i - Injuries due to falls in people aged 65 and over (males/females) (Male)	2012/13	1966	1602	2975		903
2.24i - Injuries due to falls in people aged 65 and over (males/females) (Female)	2012/13	2740	2420	4041		1452
2.24ii - Injuries due to falls in people aged 65 and over - aged 65-79	2012/13	1061	975	1826		544
2.24iii - Injuries due to falls in people aged 65 and over - aged 80+	2012/13	6101	5015	9119		2876

## Health protection

	Period	Local value	Eng. value	Eng. worst	Range	Eng. best
3.01 - Fraction of mortality attributable to particulate air pollution	2012	4.8	5.1	3.0		7.7
3.02i - Chlamydia detection rate (15-24 year olds) - Old NCSP data < 2000 2000 to 2400 ≥ 2400	2011	2207	2092	948		4911
3.02ii - Chlamydia detection rate (15-24 year olds) - CTAD < 1900 1900 to 2300 ≥ 2300	2013	2047	2016	840		5758
3.02ii - Chlamydia detection rate (15-24 year olds) - CTAD (Male)	2013	1304	1387	599		4262
3.02ii - Chlamydia detection rate (15-24 year olds) - CTAD (Female)	2013	2790	2634	1094		6358
3.03i - Population vaccination coverage - Hepatitis B (1 year old)	2013/14	- ^	-	13.6		100
3.03i - Population vaccination coverage - Hepatitis B (2 years old)	2013/14	- *	-	-100.0		100
3.03iii - Population vaccination coverage - Dtap / IPV / Hib (1 year old) < 90 ≥ 90	2013/14	95.9 ^	94.3	78.6		98.4

Note: \* - Disclosure control applied, ^ - Value estimated

## Stockport

## Health protection continued

	Period	Local value	Eng. value	Eng. worst	Range	Eng. best
3.03iii - Population vaccination coverage - Dtap / IPV / Hib (2 years old) <b>&lt; 90 ≥ 90</b>	2013/14	97.7 ^	96.1	81.6		99.1
3.03iv - Population vaccination coverage - MenC <b>&lt; 90 ≥ 90</b>	2012/13	96.3 ^	93.9	75.9		98.8
3.03v - Population vaccination coverage - PCV <b>&lt; 90 ≥ 90</b>	2013/14	95.5 ^	94.1	78.2		98.3
3.03vi - Population vaccination coverage - Hib / MenC booster (2 years old) <b>&lt; 90 ≥ 90</b>	2013/14	94.1	92.5	76.6		98.1
3.03vi - Population vaccination coverage - Hib / Men C booster (5 years) <b>&lt; 90 ≥ 90</b>	2013/14	91.3 ^	91.9	72.7		98.1
3.03vii - Population vaccination coverage - PCV booster <b>&lt; 90 ≥ 90</b>	2013/14	93.0 ^	92.4	76.4		98.5
3.03viii - Population vaccination coverage - MMR for one dose (2 years old) <b>&lt; 90 ≥ 90</b>	2013/14	93.7 ^	92.7	78.3		98.3
3.03ix - Population vaccination coverage - MMR for one dose (5 years old) <b>&lt; 90 ≥ 90</b>	2013/14	97.2 ^	94.1	74.8		98.6
3.03x - Population vaccination coverage - MMR for two doses (5 years old) <b>&lt; 90 ≥ 90</b>	2013/14	92.7 ^	88.3	63.8		97.4
3.03xii - Population vaccination coverage - HPV <b>&lt; previous years England average ≥ previous years England average</b>	2013/14	91.9	86.7	51.1		96.6
3.03xiii - Population vaccination coverage - PPV <b>&lt; previous years England average ≥ previous years England average</b>	2012/13	73.4 ^	69.1	55.3		77.0
3.03xiv - Population vaccination coverage - Flu (aged 65+) <b>&lt; 75 ≥ 75</b>	2013/14	80.5	73.2	62.9		80.5
3.03xv - Population vaccination coverage - Flu (at risk individuals) <b>&lt; 75 ≥ 75</b>	2013/14	68.6	52.3	38.9		68.6
3.04 - People presenting with HIV at a late stage of infection <b>&lt; 25 25 to 50 ≥ 50</b>	2011 - 13	47.4	45.0	77.3		25.9
3.05i - Treatment completion for TB <b>&lt; 85 ≥ 85</b>	2012	- x	82.8	22.6		100
3.05ii - Incidence of TB	2010 - 12	6.4	15.1	112.3		0.0
3.06 - NHS organisations with a board approved sustainable development management plan	2013/14	33.3	41.6	0.0		83.3
3.07 - Comprehensive, agreed inter-agency plans for responding to health protection incidents and emergencies	2014/15	100	95.2	0.0		100

## Healthcare and premature mortality

	Period	Local value	Eng. value	Eng. worst	Range	Eng. best
4.01 - Infant mortality	2010 - 12	3.8	4.1	7.5		1.1
4.02 - Tooth decay in children aged 5	2011/12	0.63	0.94	2.10		0.35
4.03 - Mortality rate from causes considered preventable (Persons)	2011 - 13	191.0	183.9	319.7		130.3
4.03 - Mortality rate from causes considered preventable (Male)	2011 - 13	234.5	233.1	409.1		166.5
4.03 - Mortality rate from causes considered preventable (Female)	2011 - 13	149.3	138.0	235.2		93.7
4.04i - Under 75 mortality rate from all cardiovascular diseases (Persons)	2011 - 13	72.2	78.2	137.0		52.1
4.04i - Under 75 mortality rate from all cardiovascular diseases (Male)	2011 - 13	99.9	109.5	184.9		75.0
4.04i - Under 75 mortality rate from all cardiovascular diseases (Female)	2011 - 13	46.0	48.6	91.2		29.9

Note: ^ - Value estimated, x - Value Missing

## Healthcare and premature mortality continued

	Period	Local value	Eng. value	Eng. worst	Range	Eng. best
4.04ii - Under 75 mortality rate from cardiovascular diseases considered preventable (Persons)	2011 - 13	45.0	50.9	89.0		30.7
4.04ii - Under 75 mortality rate from cardiovascular diseases considered preventable (Male)	2011 - 13	67.6	76.7	130.9		46.2
4.04ii - Under 75 mortality rate from cardiovascular diseases considered preventable (Female)	2011 - 13	23.5	26.5	57.1		14.5
4.05i - Under 75 mortality rate from cancer (Persons)	2011 - 13	142.0	144.4	198.9		104.0
4.05i - Under 75 mortality rate from cancer (Male)	2011 - 13	156.0	160.9	230.7		113.8
4.05i - Under 75 mortality rate from cancer (Female)	2011 - 13	129.2	129.2	182.3		95.5
4.05ii - Under 75 mortality rate from cancer considered preventable (Persons)	2011 - 13	83.6	83.8	126.9		52.7
4.05ii - Under 75 mortality rate from cancer considered preventable (Male)	2011 - 13	88.9	91.3	148.1		46.9
4.05ii - Under 75 mortality rate from cancer considered preventable (Female)	2011 - 13	78.8	76.9	118.2		55.6
4.06i - Under 75 mortality rate from liver disease (Persons)	2011 - 13	23.5	17.9	43.4		11.3
4.06i - Under 75 mortality rate from liver disease (Male)	2011 - 13	32.7	23.6	58.9		14.3
4.06i - Under 75 mortality rate from liver disease (Female)	2011 - 13	14.7	12.5	27.7		7.4
4.06ii - Under 75 mortality rate from liver disease considered preventable (Persons)	2011 - 13	21.3	15.7	39.5		9.6
4.06ii - Under 75 mortality rate from liver disease considered preventable (Male)	2011 - 13	29.8	21.1	54.4		12.4
4.06ii - Under 75 mortality rate from liver disease considered preventable (Female)	2011 - 13	13.1	10.5	24.5		6.4
4.07i - Under 75 mortality rate from respiratory disease (Persons)	2011 - 13	26.9	33.2	78.1		19.5
4.07i - Under 75 mortality rate from respiratory disease (Male)	2011 - 13	26.8	39.1	94.6		23.0
4.07i - Under 75 mortality rate from respiratory disease (Female)	2011 - 13	26.9	27.6	67.1		14.2
4.07ii - Under 75 mortality rate from respiratory disease considered preventable (Persons)	2011 - 13	15.3	17.9	46.6		7.6
4.07ii - Under 75 mortality rate from respiratory disease considered preventable (Male)	2011 - 13	15.1	20.4	52.9		10.6
4.07ii - Under 75 mortality rate from respiratory disease considered preventable (Female)	2011 - 13	15.4	15.5	41.4		7.6
4.08 - Mortality from communicable diseases (Persons)	2011 - 13	52.5	62.2	93.8		36.0
4.08 - Mortality from communicable diseases (Male)	2011 - 13	59.6	72.1	117.0		46.9
4.08 - Mortality from communicable diseases (Female)	2011 - 13	49.0	56.2	91.4		30.9
4.09 - Excess under 75 mortality rate in adults with serious mental illness	2012/13	394.5	347.2	564.2		139.4
4.10 - Suicide rate (Persons)	2011 - 13	11.4	8.8	13.6		4.5
4.10 - Suicide rate (Male)	2011 - 13	18.4	13.8	21.9		8.0
4.10 - Suicide rate (Female)	2011 - 13	- x	4.0	6.6		2.2
4.11 - Emergency readmissions within 30 days of discharge from hospital (Persons)	2011/12	12.5	11.8	14.5		8.8
4.11 - Emergency readmissions within 30 days of discharge from hospital (Male)	2011/12	13.0	12.1	14.9		8.7
4.11 - Emergency readmissions within 30 days of discharge from hospital (Female)	2011/12	11.9	11.5	14.7		8.3
4.12i - Preventable sight loss - age related macular degeneration (AMD)	2012/13	52.6	104.4	31.7		221.3
4.12ii - Preventable sight loss - glaucoma	2012/13	8.6	12.5	2.8		29.3
4.12iii - Preventable sight loss - diabetic eye disease	2012/13	2.5	3.5	1.1		14.0
4.12iv - Preventable sight loss - sight loss certifications	2012/13	31.0	42.3	13.5		79.8

Note: x - Value Missing

[www.phoutcomes.info](http://www.phoutcomes.info)

## Stockport

## Healthcare and premature mortality continued

	Period	Local value	Eng. value	Eng. worst	Range	Eng. best
4.13 - Health related quality of life for older people	2012/13	0.745	0.726	0.636		0.793
4.14i - Hip fractures in people aged 65 and over	2012/13	513.5	568.1	808.4		403.1
4.14ii - Hip fractures in people aged 65 and over - aged 65-79	2012/13	208.3	237.3	401.7		121.8
4.14iii - Hip fractures in people aged 65 and over - aged 80+	2012/13	1399	1528	2150		1108
4.15i - Excess Winter Deaths Index (Single year, all ages)	Aug 2012 - Jul 2013	27.6	20.1	38.2		-3.3
4.15ii - Excess Winter Deaths Index (single year, ages 85+)	Aug 2012 - Jul 2013	38.4	28.2	62.9		2.1
4.15iii - Excess Winter Deaths Index (3 years, all ages)	Aug 2010 - Jul 2013	17.4	17.4	27.0		4.3
4.15iv - Excess Winter Deaths Index (3 years, ages 85+)	Aug 2010 - Jul 2013	23.2	24.1	43.1		8.8
4.16 - Estimated diagnosis rate for people with dementia	2012/13		48.7			



# Tartan Rugs

## Overarching indicators

Indicator	Period	England	Blackburn	Blackpool	Bolton	Bury	Chesh East	Ch W & Ches	Cumbria	Halton	Knowsley	Lancs	Liverpool	Manchester	Oldham	Rochdale	Salford	Sefton	St. Helens	Stockport	Tameside	Trafford	Warrington	Wigan	Wirral	
0.1i	Healthy life expectancy at birth (Male)	2010 - 12	63.4	56.3	54.5	60.2	61.2	65.3	65.8	61.9	59.2	56.9	62.7	59.2	55.9	62.2	59.6	57.4	62.5	61.5	67.0	57.4	64.5	60.4	59.2	60.8
0.1i	Healthy life expectancy at birth (Female)	2010 - 12	64.1	59.8	58.2	62.4	62.0	68.4	63.5	65.9	60.9	57.5	62.2	59.1	55.5	59.8	57.2	58.3	63.9	61.9	65.9	56.6	62.6	61.8	59.9	62.7
0.1ii	Life Expectancy at birth (Male)	2011 - 13	79.4	76.8	74.3	77.6	78.2	80.4	79.2	79.0	77.3	76.7	78.3	76.2	75.5	77.6	77.2	76.6	78.1	78.0	79.7	76.9	79.9	78.3	77.7	77.8
0.1ii	Life Expectancy at birth (Female)	2011 - 13	83.1	81.2	80.1	81.6	81.2	83.6	83.3	82.5	80.4	80.8	82.0	80.5	80.0	81.2	81.0	80.4	82.5	81.6	83.0	80.3	83.5	81.8	80.9	82.3
0.1ii	Life Expectancy at 65 (Male)	2011 - 13	18.7	17.3	16.6	17.4	17.9	19.4	18.6	18.7	17.1	17.2	18.1	16.9	16.0	17.4	17.7	17.2	18.2	17.8	19.2	17.1	18.9	17.8	17.4	17.9
0.1ii	Life Expectancy at 65 (Female)	2011 - 13	21.1	19.6	19.4	20.0	19.7	21.4	21.0	20.8	18.8	19.4	20.4	19.2	18.9	19.8	19.9	19.1	21.1	20.1	21.1	18.9	21.5	20.1	19.5	20.4
0.2i	Slope index of inequality in life expectancy at birth based on national deprivation deciles within England (Male)	2011 - 13	9.1																							
0.2i	Slope index of inequality in life expectancy at birth based on national deprivation deciles within England (Female)	2011 - 13	6.9																							
0.2ii	Number of upper tier local authorities for which the local slope index of inequality in life expectancy (as defined in 0.2iii) has decreased (Male)	2011 - 13	80																							
0.2ii	Number of upper tier local authorities for which the local slope index of inequality in life expectancy (as defined in 0.2iii) has decreased (Female)	2011 - 13	73																							
0.2iii	Slope index of inequality in life expectancy at birth within English local authorities, based on local deprivation deciles within each area (Male)	2011 - 13	-	12.0	11.8	11.2	10.7	9.0	10.1	9.5	10.8	10.0	10.3	10.3	8.8	10.9	9.9	10.6	12.2	10.4	10.5	10.3	8.5	11.1	10.0	12.3
0.2iii	Slope index of inequality in life expectancy at birth within English local authorities, based on local deprivation deciles within each area (Female)	2011 - 13	-	4.9	6.7	9.8	7.4	7.1	7.9	7.3	9.0	7.7	7.3	9.0	7.4	9.0	6.5	10.3	10.4	9.7	8.2	9.3	6.8	8.3	9.7	10.0
0.2iv	Gap in life expectancy at birth between each local authority and England as a whole (Male)	2011 - 13	0.0	-2.6	-5.1	-1.8	-1.2	1.0	-0.2	-0.4	-2.1	-2.7	-1.1	-3.2	-3.9	-1.8	-2.2	-2.8	-1.3	-1.4	0.3	-2.5	0.5	-1.1	-1.7	-1.6

Comparison with respect to England value / goal

Lower
Similar
Higher
Better
Similar
Worse
Not compared

# Stockport

## Overarching indicators continued

Indicator	Period	England	Blackburn	Blackpool	Bolton	Bury	Chesh East	Ch W & Ches	Cumbria	Halton	Knowsley	Lancs	Liverpool	Manchester	Oldham	Rochdale	Salford	Sefton	St. Helens	Stockport	Tameside	Trafford	Warrington	Wigan	Wirral	
0.2iv	Gap in life expectancy at birth between each local authority and England as a whole (Female)	2011 - 13	0.0	-1.9	-3.0	-1.5	-1.9	0.5	0.2	-0.6	-2.7	-2.3	-1.1	-2.6	-3.1	-1.9	-2.1	-2.7	-0.6	-1.5	-0.1	-2.8	0.4	-1.3	-2.2	-0.8
0.2v	Slope index of inequality in healthy life expectancy at birth based on national deprivation deciles within England (Male)	2010 - 12	19.4																							
0.2v	Slope index of inequality in healthy life expectancy at birth based on national deprivation deciles within England (Female)	2010 - 12	19.8																							
0.2vii	Slope index of inequality in life expectancy at birth within English regions, based on regional deprivation deciles within each area (Male)	2011 - 13	-																							
0.2vii	Slope index of inequality in life expectancy at birth within English regions, based on regional deprivation deciles within each area (Female)	2011 - 13	-																							

## Wider determinants of health

1.01i	Children in poverty (all dependent children under 20)	2012	18.6	22.5	29.3	21.6	16.4	11.2	14.7	14.1	24.7	29.8	16.5	31.1	33.6	24.8	24.6	26.0	19.2	23.7	14.6	21.9	13.6	13.8	18.8	22.5
1.01ii	Children in poverty (under 16s)	2012	19.2	22.6	30.6	22.2	16.9	11.9	15.4	14.7	25.6	31.0	17.1	32.0	33.9	25.3	25.2	26.8	20.1	25.0	15.3	22.7	14.1	14.5	19.5	23.4
1.02i	School Readiness: The percentage of children achieving a good level of development at the end of reception	2013/14	60.4	46.5	54.5	54.2	56.1	62.0	61.3	58.6	45.6	60.0	63.3	54.1	52.8	51.6	50.1	56.8	57.8	61.5	62.1	52.1	68.6	60.0	55.4	62.8
1.02i	School Readiness: The percentage of children with free school meal status achieving a good level of development at the end of reception	2013/14	44.8	31.7	42.0	36.4	38.9	42.4	44.3	40.5	33.3	49.8	48.9	43.5	46.0	38.4	34.9	47.2	39.5	44.4	39.6	38.1	47.2	38.4	32.3	46.6
1.02ii	School Readiness: The percentage of Year 1 pupils achieving the expected level in the phonics screening check	2013/14	74.2	74.8	73.0	74.9	66.5	79.3	74.0	74.5	66.2	69.1	75.8	66.9	72.4	70.1	79.2	75.8	72.3	77.7	75.4	69.2	80.8	75.8	76.5	75.7
1.02ii	School Readiness: The percentage of Year 1 pupils with free school meal status achieving the expected level in the phonics screening check	2013/14	61.3	61.5	60.9	62.4	50.3	65.6	56.5	63.3	52.5	59.8	61.5	55.3	66.5	61.2	72.5	63.6	58.7	64.3	56.0	57.2	67.7	57.7	59.2	62.4

Comparison with respect to England value / goal



## Wider determinants of health continued

Indicator	Period	England	Blackburn	Blackpool	Bolton	Bury	Chesh East	Ch W & Ches	Cumbria	Halton	Knowsley	Lancs	Liverpool	Manchester	Oldham	Rochdale	Salford	Sefton	St. Helens	Stockport	Tameside	Trafford	Warrington	Wigan	Wirral
1.03 Pupil absence	2012/13	5.26	5.16	6.27	5.05	4.59	4.81	5.37	5.40	5.42	6.20	4.82	6.10	5.24	5.35	5.17	5.39	5.65	5.26	5.02	4.85	4.36	5.22	5.16	5.69
1.04 First time entrants to the youth justice system	2013	441	450	551	498	324	348	332	322	364	453	470	478	732	487	366	600	413	398	255	426	314	278	322	429
1.05 16-18 year olds not in education employment or training	2013	5.3	6.2	6.8	5.3	5.9	3.6	4.1	4.9	8.4	7.3	5.3	8.3	6.3	4.7	4.8	8.1	5.7	7.3	5.4	4.4	3.9	3.9	5.9	5.7
1.06i Adults with a learning disability who live in stable and appropriate accommodation (Persons)	2013/14	74.8	86.3	86.2	94.5	85.9	85.7	85.9	82.7	83.0	92.6	91.2	89.0	88.6	94.2	77.9	92.3	83.5	88.3	89.1	93.7	85.9	79.3	92.4	85.2
1.06i Adults with a learning disability who live in stable and appropriate accommodation (Male)	2013/14	74.5	84.8	86.7	94.9	83.5	83.7	84.3	85.2	83.7	92.2	91.9	89.3	88.7	94.6	77.0	91.8	88.0	86.3	90.1	94.0	87.1	78.0	92.6	86.1
1.06i Adults with a learning disability who live in stable and appropriate accommodation (Female)	2013/14	75.3	88.6	85.6	94.0	89.3	88.7	88.0	79.3	82.0	93.2	90.4	88.5	88.3	93.6	79.1	93.1	76.1	90.6	87.7	93.3	85.0	81.3	92.1	83.9
1.06ii % of adults in contact with secondary mental health services who live in stable and appropriate accommodation (Persons)	2013/14	60.9	30.1	33.8	87.7	37.5	61.9	61.7	47.1	57.1	70.5	32.0	66.9	61.2	39.8	48.1	78.9	62.7	56.3	47.2	45.1	80.7	51.8	57.4	74.0
1.06ii % of adults in contact with secondary mental health services who live in stable and appropriate accommodation (Male)	2013/14	59.5	27.1	31.7	87.2	35.6	60.5	58.9	45.3	54.3	66.8	28.3	65.9	59.4	42.9	46.6	77.9	60.7	53.9	46.3	42.1	79.3	48.1	54.7	73.9
1.06ii % of adults in contact with secondary mental health services who live in stable and appropriate accommodation (Female)	2013/14	62.5	34.9	35.8	88.2	40.0	63.5	65.0	49.0	60.5	74.4	35.8	68.3	63.8	36.5	50.2	80.1	65.1	60.4	48.1	48.3	82.6	55.8	62.9	74.1
1.07 People in prison who have a mental illness or a significant mental illness	2012/13	4.35																							
1.08i Gap in the employment rate between those with a long-term health condition and the overall employment rate	2013/14	8.7	9.5	14.8	12.0	11.0	2.6	8.1	6.1	14.3	24.2	11.0	18.0	14.2	7.5	14.0	10.7	12.9	12.5	8.9	12.2	8.4	5.7	14.7	12.4
1.08ii Gap in the employment rate between those with a learning disability and the overall employment rate	2013/14	65.1	60.8	66.1	65.3	64.3	63.7	69.6	69.6	62.9	62.9	64.3	53.6	60.5	63.1	59.4	- *	71.0	64.3	63.3	61.8	61.0	72.7	66.5	61.9
1.08iii Gap in the employment rate for those in contact with secondary mental health services and the overall employment rate	2013/14	64.8	58.5	62.8	58.2	70.7	62.6	66.4	66.0	63.2	62.5	61.4	58.7	58.7	64.7	59.9	58.1	69.4	64.6	70.6	63.8	62.6	72.5	65.0	63.3
1.09i Sickness absence - The percentage of employees who had at least one day off in the previous week	2010 - 12	2.5	2.0	2.8	2.3	3.0	2.4	2.3	2.8	2.2	2.1	2.6	3.1	2.8	2.8	2.6	2.3	2.0	1.9	2.5	2.4	1.8	2.3	4.3	2.2

Comparison with respect to England value / goal

Lower	Similar	Higher	Better	Similar	Worse	Not compared
-------	---------	--------	--------	---------	-------	--------------

Note: \* - Disclosure control applied

## Stockport

## Wider determinants of health continued

Indicator	Period	England	Blackburn	Blackpool	Bolton	Bury	Chesh East	Ch W & Ches	Cumbria	Halton	Knowsley	Lancs	Liverpool	Manchester	Oldham	Rochdale	Salford	Sefton	St. Helens	Stockport	Tameside	Trafford	Warrington	Wigan	Wirral
1.09ii Sickness absence - The percent of working days lost due to sickness absence	2010 - 12	1.6	1.5	2.1	1.5	2.3	1.5	1.4	2.1	1.4	1.3	1.9	2.0	2.6	2.1	2.0	1.7	1.5	1.3	1.4	2.1	1.2	1.4	3.1	1.5
1.10 Killed and seriously injured (KSI) casualties on England's roads	2011 - 13	39.7	46.9	46.7	27.0	26.3	62.0	58.3	45.7	31.8	38.1	52.8	45.6	34.4	26.4	22.0	29.2	32.6	40.9	18.8	24.1	19.1	48.8	23.1	36.5
1.11 Domestic Abuse	2012/13	18.8	26.5	26.5	27.7	27.7	5.6	5.6	16.2	5.6	30.2	26.5	30.2	27.7	27.7	27.7	27.7	30.2	30.2	27.7	27.7	5.6	27.7	30.2	30.2
1.12i Violent crime (including sexual violence) - hospital admissions for violence	2010/11 - 12/13	57.6	102.3	142.9	52.4	64.0	58.7	52.5	52.3	124.0	142.2	66.9	167.8	105.1	119.6	118.8	103.7	92.3	145.6	76.7	82.8	48.2	99.3	94.5	113.0
1.12ii Violent crime (including sexual violence) - violence offences per 1,000 population	2013/14	11.1	14.0	27.8	10.4	9.4	8.7	9.5	10.5	13.2	7.6	11.9	12.5	14.7	12.4	13.8	9.9	6.6	8.3	8.5	12.2	6.1	10.8	8.6	8.4
1.12iii - Violent crime (including sexual violence) - Rate of sexual offences per 1,000 population	2013/14	1.01	1.24	2.43	1.10	0.81	0.74	0.70	0.78	1.07	0.82	0.98	1.18	1.59	1.08	1.36	0.85	0.64	0.74	0.62	0.97	0.82	0.87	0.76	0.62
1.13i Re-offending levels - percentage of offenders who re-offend	2012	25.9	28.1	31.2	28.0	26.0	24.0	25.6	27.4	23.3	25.7	27.2	29.8	28.1	23.3	24.0	26.2	28.8	27.1	22.0	26.2	21.9	24.2	24.6	29.9
1.13ii Re-offending levels - average number of re-offences per offender	2012	0.77	0.92	0.98	0.84	0.68	0.69	0.76	0.79	0.77	0.67	0.86	0.91	0.87	0.68	0.71	0.73	0.82	0.87	0.65	0.83	0.58	0.70	0.73	1.01
1.14i The rate of complaints about noise	2012/13	7.5 ^	4.3	9.3 ^	4.2 ^	4.9 ^	3.5	5.0 ^	3.8 ^	7.8	3.4	5.1 ^	6.5	3.4 ^	3.2 ^	5.0 ^	3.5	3.3	4.9	3.5	5.4 ^	3.9	4.9 ^	2.5 ^	2.7
1.14ii The percentage of the population exposed to road, rail and air transport noise of 65dB(A) or more, during the daytime	2011	5.2	5.6	4.3	6.9	7.2	4.0	3.9	2.6	1.6	3.0	4.5	6.2	7.6	5.4	7.6	11.1	4.2	4.9	5.4	5.3	4.0	4.6	7.3	3.9
1.14iii The percentage of the population exposed to road, rail and air transport noise of 55 dB(A) or more during the night-time	2011	8.0	8.3	5.5	10.5	13.4	6.5	7.5	4.4	5.8	8.4	8.4	8.0	12.4	7.4	12.8	22.7	6.2	7.7	9.9	7.9	7.4	10.3	11.0	6.5
1.15i Statutory homelessness - homelessness acceptances	2013/14	2.3	0.7	0.6	2.3	2.5	0.6	0.5	0.6	0.9	1.1	0.7 ^	0.7	2.6	0.5	3.9	2.2	0.4	1.2	1.1	0.7	1.7	1.2	1.3	1.0
1.15ii Statutory homelessness - households in temporary accommodation	2013/14	2.6	0.1	0.3	0.4	0.2	0.2	0.3	0.2	0.3	0.1	0.2	0.2	1.6	0.2	0.4	0.6	0.1	0.2	0.2	0.1	0.5	0.4	0.2	0.1
1.16 Utilisation of outdoor space for exercise/health reasons	Mar 2013 - Feb 2014	17.1	10.1	13.4 \$	12.2	20.2	20.0	23.8 \$	19.4	9.2	10.0	18.6	16.4	13.9	17.7	18.8 \$	9.5 \$	13.0	14.1	17.5	13.2	14.7	20.5	18.6 \$	20.7 \$
1.17 Fuel Poverty	2012	10.4	14.0	13.5	11.4	10.3	9.5	9.4	11.6	9.2	10.2	10.8	14.4	15.9	11.2	11.5	10.7	11.4	10.1	9.7	10.4	11.1	8.3	9.4	11.2

Comparison with respect to England value / goal

Lower	Similar	Higher	Better	Similar	Worse	Not compared
-------	---------	--------	--------	---------	-------	--------------

Note: ^ - Value estimated, \$ - Data quality note

## Wider determinants of health continued

Indicator	Period	England	Blackburn	Blackpool	Bolton	Bury	Chesh East	Ch W & Ches	Cumbria	Halton	Knowsley	Lancs	Liverpool	Manchester	Oldham	Rochdale	Salford	Sefton	St. Helens	Stockport	Tameside	Trafford	Warrington	Wigan	Wirral
1.18i Social Isolation: % of adult social care users who have as much social contact as they would like	2013/14	44.5	54.4	47.7	41.0	36.7	45.4	44.5	47.9	49.2	52.1	49.2	46.1	44.7	44.5	41.3	38.0	48.5	46.4	43.2	41.3	44.1	47.2	44.6	46.3
1.18ii Social Isolation: % of adult carers who have as much social contact as they would like	2012/13	41.3	45.9 \$	37.7	45.0	46.5	49.9	46.7 \$	39.6	42.7	43.5	38.3	27.4	42.9	36.7	47.9	40.0	40.1	51.1	46.7	44.3	41.6	45.9	38.8	45.9
1.19i Older people's perception of community safety - safe in local area during the day	2012/13	97.5																							
1.19ii Older people's perception of community safety - safe in local area after dark	2012/13	61.9																							
1.19iii Older people's perception of community safety - safe in own home at night	2012/13	94.3																							

## Health improvement

2.01 Low birth weight of term babies	2012	2.8	3.8	3.0	3.9	2.3	2.1	1.7	2.2	2.2	3.0	3.0	2.9	3.4	4.0	3.7	3.2	2.4	2.3	2.1	2.4	2.4	1.9	2.2	1.9
2.02i Breastfeeding - Breastfeeding initiation	2013/14	73.9	72.7	60.9	64.4	69.7	69.9	65.3	66.4	51.6	- x	69.1	53.2	68.1	66.4	65.1	61.9	56.8	57.1	73.7	61.1	77.3	67.1	55.5	- x
2.02ii Breastfeeding - Breastfeeding prevalence at 6-8 weeks after birth	2013/14	- x	- x	- x	40.0	36.1	45.5	- x	- x	21.7	19.4	- x	31.2	- x	38.8	- x	39.1	27.2	- x	- x	- x	- x	36.6	31.2	31.0
2.03 Smoking status at time of delivery	2013/14	12.0 \$	15.5	27.5	16.0	13.6	13.3	12.9	13.8	19.0	20.6	- x	17.0	12.5	16.0	18.7	15.1	15.3	19.0	12.2	17.8	7.3	10.4	16.8	- x
2.04 Under 18 conceptions	2012	27.7	33.2	42.9	30.3	32.6	23.8	28.5	25.5	40.4	39.3	28.7	35.7	45.0	33.1	35.0	37.9	28.0	38.1	26.8	32.7	20.2	24.8	32.0	33.5
2.04 Under 18 conceptions: conceptions in those aged under 16	2012	5.6	7.3	8.0	5.7	5.6	5.1	6.6	6.3	9.2	9.5	5.8	8.5	8.4	6.2	6.6	7.3	5.2	8.6	6.0	6.8	3.8	6.5	7.2	6.0
2.06i Excess weight in 4-5 and 10-11 year olds - 4-5 year olds	2013/14	22.5	23.5	27.3	21.9	19.4	18.8	24.5	25.1	29.5	27.1	23.2	24.5	25.8	23.8	22.8	23.1	24.8	25.9	21.1	24.5	20.8	20.2	25.9	23.1
2.06ii Excess weight in 4-5 and 10-11 year olds - 10-11 year olds	2013/14	33.5	32.5	36.1	34.6	34.0	29.3	33.6	33.4	33.7	36.6	32.7	39.1	40.3	36.0	34.4	35.6	35.0	36.7	30.2	33.3	32.0	31.3	36.2	35.0
2.07i Hospital admissions caused by unintentional and deliberate injuries in children (aged 0-14 years)	2012/13	103.8	157.1	147.2	137.1	134.9	122.5	128.2	119.0	130.6	148.7	138.8	107.0	170.9	164.2	147.4	163.9	100.9	134.0	127.9	148.9	91.1	134.3	120.3	106.9
2.07i Hospital admissions caused by unintentional and deliberate injuries in children (aged 0-4 years)	2012/13	134.7	231.2	156.9	220.8	218.8	163.7	185.4	166.6	171.8	185.9	173.2	115.8	241.0	270.0	240.7	218.1	117.4	178.9	168.0	206.7	132.6	164.5	140.0	146.8

Comparison with respect to England value / goal

Lower	Similar	Higher	Better	Similar	Worse	Not compared
-------	---------	--------	--------	---------	-------	--------------

Note: x - Value Missing, \$ - Data quality note

## Stockport

## Health improvement continued

Indicator	Period	England	Blackburn	Blackpool	Bolton	Bury	Chesh East	Ch W & Ches	Cumbria	Halton	Knowsley	Lancs	Liverpool	Manchester	Oldham	Rochdale	Salford	Sefton	St. Helens	Stockport	Tameside	Trafford	Warrington	Wigan	Wirral
2.07ii Hospital admissions caused by unintentional and deliberate injuries in young people (aged 15-24)	2012/13	130.7	167.0	277.3	118.9	131.1	138.2	119.7	155.3	211.1	199.9	146.4	145.0	106.8	153.9	167.8	161.9	150.3	233.9	157.2	178.4	125.8	233.2	195.0	194.2
2.08 Emotional well-being of looked after children	2013/14	13.9	15.5	13.9	13.1	12.0	14.2	14.1	14.4	13.7	12.4	13.0	12.3	12.8	12.8	11.5	12.3	10.8	12.5	14.1	11.9	10.5	14.3	15.2	16.8
2.09ii Smoking prevalence age 15 years - regular smokers	2013	8																							
2.09iii Smoking prevalence age 15 years - occasional smokers	2013	10																							
2.12 Excess Weight in Adults	2012	63.8	67.9	72.1	60.1	68.2	61.2	68.5	68.3	70.2	67.3	64.7	67.2	62.7	69.6	68.6	63.3	68.7	67.5	65.9	69.2	59.7	70.0	65.3	66.4
2.13i Percentage of physically active and inactive adults - active adults	2013	55.6	49.3	47.2	49.1	54.1	56.4	58.4	56.3	50.9	49.8	53.8	51.0	55.4	49.2	52.1	48.4	54.4	48.9	54.7	47.0	55.0	54.1	51.6	59.6
2.13ii Percentage of active and inactive adults - inactive adults	2013	28.9	35.7	38.2	36.9	29.5	29.5	26.4	31.3	33.6	37.1	30.5	33.4	28.9	37.0	35.6	33.4	31.5	32.0	29.6	38.1	29.1	27.5	36.0	26.3
2.14 Smoking Prevalence	2013	18.4	22.5	26.5	21.0	18.2	17.3	16.5	18.1	18.4	23.4	19.8	22.9	23.7	21.0	22.7	22.9	18.7	19.7	14.7	22.4	19.6	18.0	20.2	18.4
2.14 Smoking prevalence - routine & manual	2013	28.6	29.6	36.8	31.9	31.9	27.9	28.9	27.6	21.9	31.9	30.4	31.6	33.6	34.0	33.0	33.1	29.3	24.4	29.5	30.4	30.2	31.4	27.0	28.5
2.15i Successful completion of drug treatment - opiate users	2013	7.8	8.4	9.4	3.6	9.7	8.1	7.4	11.5	12.4	5.3	8.4	7.3	7.0	8.7	6.4	10.7	7.3	10.9	8.8	7.1	9.2	4.4	3.5	7.3
2.15ii Successful completion of drug treatment - non-opiate users	2013	37.7	45.6	43.4	29.8	50.3	43.4	37.9	39.4	53.5	41.7	41.2	43.5	29.7	41.5	30.5	39.3	48.4	49.7	38.6	41.6	33.7	27.1	24.5	52.8
2.16 People entering prison with substance dependence issues who are previously not known to community treatment	2012/13	46.9	44.2	40.9	37.6	45.9	51.7 *	51.7 *	35.5	44.6	62.3	39.9	54.8	60.2	41.4	31.6	42.1	41.4	33.8	45.6	22.5	44.2	53.0	39.9	33.1
2.17 Recorded diabetes	2013/14	6.21	7.57	7.21	7.67	6.51	6.03	6.13	6.63	7.34	6.99	6.49	5.86	5.88	7.15	7.21	5.96	6.39	6.96	5.85	7.16	5.96	6.16	6.97	6.49
2.18 Alcohol related admissions to hospital - narrow definition (Persons)	2012/13	637	808	1121	626	616	540	552	706	814	859	698	810	852	650	727	968	731	855	651	831	560	734	860	856
2.18 Alcohol related admissions to hospital - narrow definition (Male)	2012/13	829	1124	1425	843	831	694	759	905	1115	1208	910	1120	1204	876	1000	1257	989	1161	857	1174	768	952	1061	1172
2.18 Alcohol related admissions to hospital - narrow definition (Female)	2012/13	465	508	839	428	421	404	366	523	544	564	506	526	526	448	476	697	511	572	463	514	374	539	681	581
2.19 Cancer diagnosed at early stage (Experimental Statistics)	2012	41.6	43.3	44.8	48.2	47.5	50.9	48.8	43.7	43.1	43.4	47.1	42.8	45.4	45.2	44.7	47.0	46.1	48.4	46.4	44.1	49.6	44.0	49.0	42.7

Comparison with respect to England value / goal

Lower	Similar	Higher	Better	Similar	Worse	Not compared
-------	---------	--------	--------	---------	-------	--------------

Note: \* - Disclosure control applied

[www.phoutcomes.info](http://www.phoutcomes.info)

## Health improvement continued

Indicator	Period	England	Blackburn	Blackpool	Bolton	Bury	Chesh East	Ch W & Ches	Cumbria	Halton	Knowsley	Lancs	Liverpool	Manchester	Oldham	Rochdale	Salford	Sefton	St. Helens	Stockport	Tameside	Trafford	Warrington	Wigan	Wirral
2.20i Cancer screening coverage - breast cancer	2014	75.9	65.9	68.8	73.0	75.7	78.4	79.0	81.8	75.0	69.4	73.8	67.8	60.3	66.7	70.8	68.8	73.2	73.7	73.4	70.9	73.7	77.9	73.9	77.3
2.20ii Cancer screening coverage - cervical cancer	2014	74.2	67.3	69.7	73.2	75.0	76.0	76.3	77.5	71.6	73.4	73.7	67.8	66.7	73.0	73.7	69.5	71.6	75.4	76.1	74.1	73.6	75.4	75.5	72.9
2.21i Antenatal infectious disease screening – HIV coverage	2013/14	98.9																							
2.21iii Antenatal Sickle Cell and Thalassaemia Screening - coverage	2013/14	98.9																							
2.21iv - Newborn bloodspot screening - coverage	2013/14	93.5	- x	95.6 ^	98.7 ^	98.6 ^	- x	- x	- x	92.9 ^	89.5 ^	- x	98.9 ^	- x	99.0 ^	99.2 ^	- x	98.4 ^	92.9 ^	95.7 ^	98.4 ^	- x	- x	95.2 ^	- x
2.21v Newborn Hearing screening - Coverage	2013/14	98.5	98.6	98.9	99.5	95.9	99.2	99.7	98.4	98.8	97.5	98.8	98.3	97.5	98.7	98.3	96.5	98.8	99.2	98.8	97.9	98.0	99.5	97.6	99.5
2.21vii Access to non-cancer screening programmes - diabetic retinopathy	2012/13	79.1	80.6 ^	72.4 ^	83.7 ^	84.9 ^	81.4 ^	78.3 ^	72.8 ^	79.8 ^	77.0 ^	76.8 ^	- x	73.4 ^	81.5 ^	85.0 ^	75.6 ^	- x	79.8 ^	80.1 ^	77.5 ^	77.6 ^	77.5 ^	89.1 ^	81.1 ^
2.21viii Abdominal Aortic Aneurysm Screening	2013/14	95.9	100	99.9	99.2	99.2	99.0	67.8	99.9	52.6	79.3	99.4	60.0	97.5	97.2	97.2	99.2	50.1	39.3	97.7	99.5	98.8	51.7	96.7	66.3
2.22iii Cumulative % of the eligible population aged 40-74 offered an NHS Health Check	2013/14	18.4	13.2	25.1	23.1	15.7	15.2	7.5	24.0	13.7	20.4	11.6	14.4	20.0	6.5	22.0	17.9	20.7	12.0	23.3	14.2	20.5	20.9	16.2	17.7
2.22iv Cumulative % of the eligible population aged 40-74 offered an NHS Health Check who received an NHS Health Check	2013/14	49.0 \$	73.2	76.1	81.3	65.0	55.8	82.4	45.5	41.8	29.3	52.7	56.0	43.2	67.7	62.8	48.9	44.4	54.6	79.5	38.2	47.6	57.1	71.6	53.1
2.22v Cumulative % of the eligible population aged 40-74 who received an NHS Health check	2013/14	9.0	9.7	19.1	18.8	10.2	8.5	6.1	10.9	5.7	6.0	6.1	8.1	8.6	4.4	13.8	8.7	9.2	6.5	18.5	5.4	9.8	11.9	11.6	9.4
2.23i Self-reported well-being - people with a low satisfaction score	2013/14	5.6	9.4	7.1	8.3	5.9	- *	- *	4.1	8.9	7.2	6.0	8.1	9.2	11.2	12.7	5.5	8.4	6.1	5.2	7.7	5.8	5.6	7.5	8.9
2.23ii Self-reported well-being - people with a low worthwhile score	2013/14	4.2	5.7	5.5	5.6	3.8	- *	- *	- *	6.0	6.6	5.1	6.5	5.7	5.9	6.5	6.4	5.4	4.3	- *	6.8	- *	4.6	5.0	6.5
2.23iii Self-reported well-being - people with a low happiness score	2013/14	9.7	12.2	11.1	12.0	10.1	8.7	9.6	9.7	12.1	13.6	10.1	12.2	12.0	12.0	14.8	12.4	10.6	10.4	9.2	10.7	7.4	9.0	10.4	13.0
2.23iv Self-reported well-being - people with a high anxiety score	2013/14	20.0	22.5	23.1	20.1	19.3	17.8	17.1	17.7	22.2	23.6	20.8	25.7	19.2	20.5	21.0	21.8	24.9	20.9	20.9	22.3	20.7	20.6	19.2	21.9
2.23v Average Warwick-Edinburgh Mental Well-Being Scale (WEMWBS) score	2010 - 12	37.7																							
2.24i Injuries due to falls in people aged 65 and over (Persons)	2012/13	2011	2344	2264	1402	1906	1975	2050	1680	3293	3378	1886	3127	2731	2516	2462	2785	2119	3143	2353	2073	2266	3508	2553	2623

Comparison with respect to England value / goal

Lower	Similar	Higher	Better	Similar	Worse	Not compared
-------	---------	--------	--------	---------	-------	--------------

Note: \* - Disclosure control applied, ^ - Value estimated, x - Value Missing, \$ - Data quality note

# Stockport

## Health improvement continued

Indicator	Period	England	Blackburn	Blackpool	Bolton	Bury	Chesh East	Ch W & Ches	Cumbria	Halton	Knowsley	Lancs	Liverpool	Manchester	Oldham	Rochdale	Salford	Sefton	St. Helens	Stockport	Tameside	Trafford	Warrington	Wigan	Wirral
2.24i Injuries due to falls in people aged 65 and over (males/females) (Male)	2012/13	1602	1887	1654	1135	1581	1528	1648	1385	2582	2785	1440	2697	2569	1868	1905	2427	1860	2553	1966	1708	1850	2975	2005	2096
2.24i Injuries due to falls in people aged 65 and over (males/females) (Female)	2012/13	2420	2801	2873	1669	2232	2421	2452	1975	4005	3972	2332	3558	2892	3164	3019	3142	2377	3732	2740	2437	2682	4041	3101	3149
2.24ii Injuries due to falls in people aged 65 and over - aged 65-79	2012/13	975	1145	1201	739	1013	945	893	872	1768	1586	955	1775	1556	1408	1284	1452	1118	1383	1061	1047	1144	1573	1184	1392
2.24iii Injuries due to falls in people aged 65 and over - aged 80+	2012/13	5015	5822	5345	3323	4498	4960	5407	4024	7718	8577	4586	7049	6137	5730	5878	6652	5021	8247	6101	5045	5520	9119	6523	6191

## Health protection

3.01 Fraction of mortality attributable to particulate air pollution	2012	5.1	4.3	3.4	4.7	4.8	4.3	4.2	3.0	4.8	4.8	4.0	4.5	5.1	5.0	4.8	5.2	4.0	4.8	4.8	5.0	4.8	4.7	4.6	3.9
3.02i Chlamydia detection rate (15-24 year olds) - Old NCSP data	2011	2092	1445	4375	2712	2464	1948	1906	2149	2759	2405	2295	2223	2397	2161	2572	3223	1994	2779	2207	3072	2138	2657	2417	2509
< 2000 2000 to 2400 ≥ 2400																									
3.02ii Chlamydia detection rate (15-24 year olds) - CTAD	2013	2016	1472	3892	2603	2029	1780	2303	1526	2137	2090	2292	2218	2006	2862	2327	2348	1770	1958	2047	3157	1769	1978	3002	2309
< 1900 1900 to 2300 ≥ 2300																									
3.02ii Chlamydia detection rate (15-24 year olds) - CTAD (Male)	2013	1387	1067	2800	1592	1093	1116	1558	963	1547	1596	1661	1603	1345	2039	1561	1501	1023	1170	1304	2092	1089	1352	2033	1663
3.02ii Chlamydia detection rate (15-24 year olds) - CTAD (Female)	2013	2634	1851	4947	3643	3003	2468	2955	2118	2715	2504	2924	2773	2660	3677	3082	3178	2505	2747	2790	4206	2493	2598	3967	2927
3.03i Population vaccination coverage - Hepatitis B (1 year old)	2013/14	-	- *	- x	42.9 ^	13.6 ^	100 ^	100 ^	- ^	- *	- *	- x	66.7 ^	90.6 ^	100 ^	44.3 ^	100 ^	- *	- *	- ^	- *	100 ^	- x	100 ^	100 ^
3.03i Population vaccination coverage - Hepatitis B (2 years old)	2013/14	-	- ^	- x	40.0 ^	9.6 ^	100 ^	100 ^	- *	- ^	- x	- x	66.7 ^	88.2 ^	48.6 ^	17.4 ^	100 ^	- ^	- ^	- *	- *	100 ^	- x	- *	100 ^
3.03iii Population vaccination coverage - Dtap / IPV / Hib (1 year old)	2013/14	94.3 ^	94.8 ^	95.8 ^	96.3 ^	95.9 ^	97.0 ^	96.9 ^	97.3 ^	92.8 ^	96.0 ^	92.7 ^	95.6 ^	95.4 ^	97.1 ^	96.3 ^	97.7 ^	96.3 ^	92.8 ^	95.9 ^	96.5 ^	97.7 ^	96.5 ^	96.7 ^	96.8 ^
< 90 ≥ 90																									
3.03iii Population vaccination coverage - Dtap / IPV / Hib (2 years old)	2013/14	96.1 ^	95.9 ^	96.9 ^	98.2 ^	96.5 ^	97.7 ^	97.4 ^	98.1 ^	97.7 ^	97.3 ^	96.4 ^	97.4 ^	96.2 ^	96.9 ^	97.0 ^	99.1 ^	97.2 ^	97.7 ^	97.7 ^	97.8 ^	98.7 ^	98.3 ^	97.6 ^	97.8 ^
< 90 ≥ 90																									

Comparison with respect to England value / goal



Note: \* - Disclosure control applied, ^ - Value estimated, x - Value Missing



## Health protection continued

Indicator	Period	England	Blackburn	Blackpool	Bolton	Bury	Chesh East	Ch W & Ches	Cumbria	Halton	Knowsley	Lancs	Liverpool	Manchester	Oldham	Rochdale	Salford	Sefton	St. Helens	Stockport	Tameside	Trafford	Warrington	Wigan	Wirral
3.03iv Population vaccination coverage - MenC <b>&lt; 90 ≥ 90</b>	2012/13	93.9 ^	94.2 ^	95.2 ^	95.8 ^	94.5 ^	97.5 ^	97.3 ^	96.5 ^	93.8 ^	97.2 ^	93.7 ^	95.9 ^	94.5 ^	97.1 ^	96.8 ^	96.1 ^	95.5 ^	93.8 ^	<b>96.3 ^</b>	95.6 ^	96.3 ^	96.1 ^	97.0 ^	95.8 ^
3.03v Population vaccination coverage - PCV <b>&lt; 90 ≥ 90</b>	2013/14	94.1 ^	94.2 ^	95.9 ^	96.5 ^	95.6 ^	97.2 ^	96.8 ^	97.3 ^	94.0 ^	96.2 ^	91.4 ^	95.5 ^	94.3 ^	96.5 ^	95.9 ^	96.3 ^	96.0 ^	94.0 ^	<b>95.5 ^</b>	96.3 ^	97.1 ^	96.2 ^	96.8 ^	96.6 ^
3.03vi Population vaccination coverage - Hib / MenC booster (2 years old) <b>&lt; 90 ≥ 90</b>	2013/14	92.5	94.0	91.8	95.0	93.1	96.4	93.2	96.7	96.9	97.0	91.0	94.5	91.1	95.2	94.7	98.1	94.9	96.9	<b>94.1</b>	94.6	96.4	95.6	95.3	94.8
3.03vi Population vaccination coverage - Hib / Men C booster (5 years) <b>&lt; 90 ≥ 90</b>	2013/14	91.9 ^	94.2 ^	90.9 ^	<b>89.4 ^</b>	93.0 ^	95.4 ^	95.4 ^	92.8 ^	96.7 ^	97.5 ^	94.2 ^	90.8 ^	<b>87.7 ^</b>	90.7 ^	91.9 ^	97.7 ^	91.7 ^	96.7 ^	<b>91.3 ^</b>	94.2 ^	92.7 ^	95.3 ^	95.5 ^	93.1 ^
3.03vii Population vaccination coverage - PCV booster <b>&lt; 90 ≥ 90</b>	2013/14	92.4 ^	94.5 ^	91.9 ^	96.0 ^	93.9 ^	94.9 ^	96.0 ^	95.2 ^	96.5 ^	96.7 ^	91.1 ^	95.0 ^	92.0 ^	95.7 ^	95.5 ^	97.8 ^	95.0 ^	96.5 ^	<b>93.0</b>	95.0 ^	96.4 ^	95.1 ^	95.6 ^	93.5 ^
3.03viii Population vaccination coverage - MMR for one dose (2 years old) <b>&lt; 90 ≥ 90</b>	2013/14	92.7 ^	94.2 ^	91.5 ^	96.4 ^	95.1 ^	95.1 ^	95.4 ^	96.7 ^	96.3 ^	95.2 ^	93.7 ^	94.7 ^	92.9 ^	96.1 ^	95.7 ^	98.3 ^	94.7 ^	96.3 ^	<b>93.7 ^</b>	93.9 ^	96.8 ^	94.7 ^	95.3 ^	95.1 ^
3.03ix Population vaccination coverage - MMR for one dose (5 years old) <b>&lt; 90 ≥ 90</b>	2013/14	94.1 ^	96.7 ^	94.2 ^	96.2 ^	95.6 ^	95.5 ^	94.5 ^	96.7 ^	97.4 ^	97.8 ^	96.0 ^	96.8 ^	94.7 ^	94.9 ^	95.0 ^	98.6 ^	96.3 ^	97.4 ^	<b>97.2 ^</b>	96.7 ^	92.4 ^	96.0 ^	95.4 ^	97.2 ^
3.03x Population vaccination coverage - MMR for two doses (5 years old) <b>&lt; 90 ≥ 90</b>	2013/14	88.3 ^	<b>89.3 ^</b>	<b>85.1 ^</b>	91.8 ^	92.4 ^	90.1 ^	90.7 ^	93.7 ^	93.1 ^	94.1 ^	90.0 ^	90.9 ^	90.2 ^	93.0 ^	92.7 ^	97.4 ^	90.3 ^	93.1 ^	<b>92.7 ^</b>	90.3 ^	92.4 ^	90.8 ^	91.0 ^	92.2 ^
3.03xii Population vaccination coverage - HPV <b>&lt; previous years England average ≥ previous years England average</b>	2013/14	86.7	90.3	<b>78.9</b>	92.9	<b>82.0</b>	93.1	93.6	91.2	90.4	94.4	89.6	88.4	<b>77.9</b>	93.3	87.7	<b>81.1</b>	90.6	91.3	<b>91.9</b>	90.9	87.2	90.0	<b>85.3</b>	90.4
3.03xiii Population vaccination coverage - PPV <b>&lt; previous years England average ≥ previous years England average</b>	2012/13	69.1 ^	70.0 ^	<b>68.0 ^</b>	71.1 ^	<b>65.0 ^</b>	72.9 ^	73.1 ^	<b>66.4 ^</b>	73.1 ^	77.0 ^	70.8 ^	69.4 ^	<b>67.7 ^</b>	<b>67.2 ^</b>	<b>66.5 ^</b>	<b>67.4 ^</b>	69.6 ^	73.1 ^	<b>73.4 ^</b>	69.4 ^	71.8 ^	<b>68.2 ^</b>	<b>65.7 ^</b>	70.7 ^
3.03xiv Population vaccination coverage - Flu (aged 65+) <b>&lt; 75 ≥ 75</b>	2013/14	73.2	76.9	<b>74.0</b>	<b>73.6</b>	<b>72.8</b>	77.8	75.4	75.4	<b>73.5</b>	77.7	76.9	76.6	<b>71.7</b>	<b>74.1</b>	77.4	76.1	75.8	78.1	<b>80.5</b>	75.5	78.2	<b>72.5</b>	<b>73.2</b>	75.1
3.03xv Population vaccination coverage - Flu (at risk individuals) <b>&lt; 75 ≥ 75</b>	2013/14	52.3	<b>59.2</b>	<b>52.8</b>	<b>55.3</b>	<b>52.6</b>	<b>58.8</b>	<b>56.5</b>	<b>59.1</b>	<b>51.9</b>	<b>55.8</b>	<b>57.2</b>	<b>56.6</b>	<b>53.9</b>	<b>58.9</b>	<b>61.3</b>	<b>54.4</b>	<b>53.2</b>	<b>56.6</b>	<b>68.6</b>	<b>58.9</b>	<b>55.6</b>	<b>47.2</b>	<b>51.9</b>	<b>55.3</b>

Comparison with respect to England value / goal



Note: ^ - Value estimated

[www.phoutcomes.info](http://www.phoutcomes.info)

# Stockport

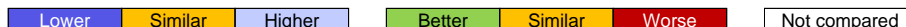
## Health protection continued

Indicator	Period	England	Blackburn	Blackpool	Bolton	Bury	Chesh East	Ch W & Ches	Cumbria	Halton	Knowsley	Lancs	Liverpool	Manchester	Oldham	Rochdale	Salford	Sefton	St. Helens	Stockport	Tameside	Trafford	Warrington	Wigan	Wirral
3.04 People presenting with HIV at a late stage of infection <b>&lt; 25 25 to 50 ≥ 50</b>	2011 - 13	45.0	50.0	31.6	61.5	65.2	40.0	48.7	62.2	40.0	44.4	46.1	46.6	50.6	33.3	61.1	39.1	39.1	44.4	47.4	66.7	53.5	42.9	53.6	52.9
3.05i Treatment completion for TB <b>&lt; 85 ≥ 85</b>	2012	82.8	88.1	25.8	81.7	- x	- x	- x	- x	- x	- x	63.1	76.2	85.1	84.8	88.1	91.7	- x	- x	- x	63.6	85.2	- x	- x	- x
3.05ii Incidence of TB	2010 - 12	15.1	38.6	14.8	21.0	10.3	2.4	2.4	3.5	0.0	2.1	9.6	10.9	39.8	22.2	18.4	12.0	4.0	2.3	6.4	15.5	13.2	4.5	3.1	3.8
3.06 NHS organisations with a board approved sustainable development management plan	2013/14	41.6	75.0	60.0	40.0	60.0	22.2	42.9	33.3	50.0	55.6	50.0	60.0	50.0	60.0	60.0	33.3	50.0	57.1	33.3	75.0	50.0	50.0	25.0	
3.07 Comprehensive, agreed inter-agency plans for responding to health protection incidents and emergencies	2014/15	95.2	100	100	100	100	100	100	100	100	100	100	100	100	100	100	100	100	100	100	100	100	100	100	- x

## Healthcare and premature mortality

4.01 Infant mortality	2010 - 12	4.1	6.5	4.7	5.1	4.6	3.6	3.2	3.0	3.9	3.3	4.8	4.7	5.0	5.9	4.2	5.0	4.8	3.0	3.8	4.2	2.3	4.3	3.1	4.4
4.02 Tooth decay in children aged 5	2011/12	0.94	1.58	1.81	1.85	1.28	0.58	0.68	1.16	1.09	1.58	1.30	1.42	1.78	2.10	1.55	1.96	0.90	1.10	0.63	1.08	0.86	1.05	1.15	1.21
4.03 Mortality rate from causes considered preventable (Persons)	2011 - 13	183.9	243.7	291.3	227.3	214.2	164.0	187.2	198.0	257.3	261.3	210.5	286.6	319.7	236.3	246.6	278.5	216.6	216.4	191.0	277.9	203.3	203.6	224.1	212.6
4.03 Mortality rate from causes considered preventable (Male)	2011 - 13	233.1	313.7	380.7	300.5	266.4	202.3	234.4	240.2	310.5	317.4	262.9	360.8	409.1	294.0	303.7	342.9	273.9	275.8	234.5	343.2	247.0	252.4	276.1	278.5
4.03 Mortality rate from causes considered preventable (Female)	2011 - 13	138.0	178.2	203.7	158.6	165.6	128.8	143.8	156.8	208.9	212.6	160.2	217.1	235.2	182.0	195.1	213.0	164.8	161.6	149.3	215.9	163.2	157.4	173.9	153.5
4.04i Under 75 mortality rate from all cardiovascular diseases (Persons)	2011 - 13	78.2	114.4	125.2	102.2	92.9	70.0	71.9	78.7	101.1	101.3	90.2	108.8	137.0	97.2	109.9	115.9	80.8	87.2	72.2	121.2	83.4	83.6	98.2	79.8
4.04i Under 75 mortality rate from all cardiovascular diseases (Male)	2011 - 13	109.5	148.2	177.5	143.4	123.1	95.2	100.3	104.2	130.7	131.0	124.9	150.7	184.9	134.5	150.5	158.6	112.7	125.7	99.9	157.3	120.1	119.6	133.1	113.9
4.04i Under 75 mortality rate from all cardiovascular diseases (Female)	2011 - 13	48.6	81.1	73.9	62.7	64.6	45.9	44.8	53.6	73.2	74.7	57.0	69.2	91.2	62.6	71.3	73.8	52.7	51.0	46.0	86.1	49.3	49.6	63.7	48.9
4.04ii Under 75 mortality rate from cardiovascular diseases considered preventable (Persons)	2011 - 13	50.9	79.2	81.9	69.2	58.1	45.4	49.9	52.6	71.4	64.7	59.1	66.8	89.0	65.6	72.9	80.6	52.2	56.9	45.0	88.0	53.0	58.6	66.1	51.0

Comparison with respect to England value / goal



Note: x - Value Missing

[www.phoutcomes.info](http://www.phoutcomes.info)

## Healthcare and premature mortality continued

Indicator	Period	England	Blackburn	Blackpool	Bolton	Bury	Chesh East	Ch W & Ches	Cumbria	Halton	Knowsley	Lancs	Liverpool	Manchester	Oldham	Rochdale	Salford	Sefton	St. Helens	Stockport	Tameside	Trafford	Warrington	Wigan	Wirral
4.04ii Under 75 mortality rate from cardiovascular diseases considered preventable (Male)	2011 - 13	76.7	109.2	120.4	106.0	84.8	67.3	74.9	73.5	100.7	90.2	87.6	99.1	130.9	96.8	105.0	117.7	79.6	87.6	67.6	119.5	82.2	88.7	97.3	79.4
4.04ii Under 75 mortality rate from cardiovascular diseases considered preventable (Female)	2011 - 13	26.5	49.5	44.2	34.0	33.2	24.6	26.1	32.0	43.7	41.7	31.8	36.3	49.1	36.3	42.1	44.1	27.9	28.3	23.5	57.1	25.8	30.3	35.4	25.2
4.05i Under 75 mortality rate from cancer (Persons)	2011 - 13	144.4	154.3	182.8	143.1	159.6	127.0	146.7	148.2	188.0	190.3	155.8	195.2	198.9	174.9	166.9	190.3	161.9	151.6	142.0	173.3	143.7	150.2	157.5	155.9
4.05i Under 75 mortality rate from cancer (Male)	2011 - 13	160.9	165.6	218.5	160.2	180.4	135.0	164.3	160.7	200.5	199.0	172.0	224.4	230.7	201.0	179.7	210.0	181.1	169.4	156.0	198.7	158.1	160.8	169.7	183.1
4.05i Under 75 mortality rate from cancer (Female)	2011 - 13	129.2	143.7	148.2	127.2	140.4	119.6	130.1	136.1	176.0	182.3	140.4	168.1	169.8	151.1	154.4	171.8	145.3	134.9	129.2	149.5	131.2	140.7	145.8	131.4
4.05ii Under 75 mortality rate from cancer considered preventable (Persons)	2011 - 13	83.8	92.1	106.6	86.4	92.4	73.5	83.3	85.6	120.9	120.6	93.5	122.5	126.9	108.1	101.5	122.5	98.6	91.8	83.6	110.1	89.9	90.7	93.2	96.6
4.05ii Under 75 mortality rate from cancer considered preventable (Male)	2011 - 13	91.3	100.4	122.9	98.8	101.0	75.9	89.9	87.8	123.6	126.2	101.4	143.1	148.1	121.8	102.2	133.9	107.5	103.0	88.9	123.8	94.4	93.8	96.3	112.8
4.05ii Under 75 mortality rate from cancer considered preventable (Female)	2011 - 13	76.9	84.1	90.7	74.7	84.7	71.3	77.0	83.5	118.2	115.2	86.1	103.4	107.1	95.6	100.7	112.2	90.9	81.3	78.8	97.2	86.1	88.1	90.5	82.1
4.06i Under 75 mortality rate from liver disease (Persons)	2011 - 13	17.9	28.9	43.4	23.5	21.8	17.6	18.9	16.9	26.2	27.9	22.4	33.9	35.7	26.6	30.5	28.2	26.9	27.4	23.5	26.9	22.7	23.8	31.5	25.5
4.06i Under 75 mortality rate from liver disease (Male)	2011 - 13	23.6	43.3	58.9	32.5	24.7	22.3	24.1	21.6	31.8	36.2	30.2	44.0	51.3	31.9	41.2	36.1	38.7	31.2	32.7	34.8	30.5	28.6	40.6	34.9
4.06i Under 75 mortality rate from liver disease (Female)	2011 - 13	12.5	- x	27.7	14.7	19.0	13.1	14.1	12.3	20.8	20.3	14.8	24.2	20.1	21.6	20.3	20.0	16.1	23.7	14.7	19.1	15.5	19.1	22.5	16.8
4.06ii Under 75 mortality rate from liver disease considered preventable (Persons)	2011 - 13	15.7	21.4	39.5	19.7	18.3	16.4	16.8	14.9	20.0	20.5	19.4	31.2	33.4	23.5	25.6	25.1	24.5	22.2	21.3	23.6	20.3	21.8	25.6	21.2
4.06ii Under 75 mortality rate from liver disease considered preventable (Male)	2011 - 13	21.1	31.8	54.4	27.7	21.5	20.9	21.2	19.0	24.9	27.9	26.7	40.8	49.2	29.4	33.4	32.5	35.3	26.0	29.8	31.2	27.0	26.6	33.2	29.7
4.06ii Under 75 mortality rate from liver disease considered preventable (Female)	2011 - 13	10.5	- x	24.5	11.9	15.3	12.0	12.6	10.9	15.2	13.8	12.3	22.0	17.9	17.8	18.1	17.6	14.7	18.5	13.1	16.1	14.0	17.2	18.0	13.4
4.07i Under 75 mortality rate from respiratory disease (Persons)	2011 - 13	33.2	49.6	78.1	48.5	39.3	27.3	30.6	34.4	53.0	58.3	40.5	65.2	74.0	49.8	49.4	58.4	35.4	47.9	26.9	45.5	31.7	36.5	44.8	46.0
4.07i Under 75 mortality rate from respiratory disease (Male)	2011 - 13	39.1	55.2	94.6	55.1	44.3	34.1	33.9	39.8	62.0	72.2	44.9	69.3	81.5	59.2	57.9	67.7	38.7	58.0	26.8	49.6	31.6	42.3	48.4	54.9
4.07i Under 75 mortality rate from respiratory disease (Female)	2011 - 13	27.6	44.1	62.0	42.0	34.5	20.9	27.2	29.2	45.1	46.0	36.4	61.4	67.1	41.2	41.6	49.1	32.4	38.4	26.9	41.6	31.7	31.2	41.4	38.0

Comparison with respect to England value / goal

Lower	Similar	Higher
-------	---------	--------

Better	Similar	Worse
--------	---------	-------

Not compared
--------------

Note: x - Value Missing

[www.phoutcomes.info](http://www.phoutcomes.info)

# Stockport

## Healthcare and premature mortality continued

Indicator	Period	England	Blackburn	Blackpool	Bolton	Bury	Chesh East	Ch W & Ches	Cumbria	Halton	Knowsley	Lancs	Liverpool	Manchester	Oldham	Rochdale	Salford	Sefton	St. Helens	Stockport	Tameside	Trafford	Warrington	Wigan	Wirral
4.07ii Under 75 mortality rate from respiratory disease considered preventable (Persons)	2011 - 13	17.9	27.9	37.8	26.9	23.3	13.3	18.0	17.8	29.2	35.0	21.0	40.6	46.6	27.5	26.9	32.1	18.7	24.9	15.3	27.7	15.4	16.2	21.3	26.1
4.07ii Under 75 mortality rate from respiratory disease considered preventable (Male)	2011 - 13	20.4	26.8	40.4	30.9	26.8	17.0	19.8	19.8	33.4	37.4	21.1	39.8	52.9	29.9	30.9	36.9	19.6	27.0	15.1	29.2	14.9	17.7	22.2	29.0
4.07ii Under 75 mortality rate from respiratory disease considered preventable (Female)	2011 - 13	15.5	29.0	35.2	23.2	20.0	9.8	16.3	15.9	25.7	32.9	20.8	41.4	40.7	25.5	23.4	27.3	17.9	22.9	15.4	26.3	15.9	14.6	20.4	23.5
4.08 Mortality from communicable diseases (Persons)	2011 - 13	62.2	74.7	91.1	78.6	57.7	61.8	59.1	55.7	76.5	78.8	73.5	79.5	84.4	69.7	59.2	78.2	56.3	83.4	52.5	82.8	65.2	77.1	93.8	62.9
4.08 Mortality from communicable diseases (Male)	2011 - 13	72.1	94.7	117.0	87.3	58.6	75.8	67.0	65.0	74.5	100.1	86.4	86.0	89.7	75.7	70.1	94.0	67.0	94.5	59.6	82.0	68.1	96.4	101.2	75.0
4.08 Mortality from communicable diseases (Female)	2011 - 13	56.2	62.4	72.2	72.9	55.2	54.7	54.1	50.3	74.9	66.2	65.4	74.7	79.4	65.6	53.7	67.5	50.8	76.3	49.0	81.5	64.0	67.2	91.4	56.1
4.09 Excess under 75 mortality rate in adults with serious mental illness	2012/13	347.2	270.7	475.3	463.3	401.2	362.5	418.2	439.5	497.3	492.0	273.8	494.1	426.7	345.1	341.1	442.4	368.6	503.4	394.5	471.7	350.9	340.2	523.8	517.9
4.10 Suicide rate (Persons)	2011 - 13	8.8	12.0	13.6	11.5	9.8	7.9	8.9	10.9	9.6	11.1	10.2	9.5	11.8	10.0	9.9	9.2	9.7	11.9	11.4	10.2	9.2	9.2	11.3	8.0
4.10 Suicide rate (Male)	2011 - 13	13.8	20.8	21.7	18.2	16.1	11.9	14.3	17.9	15.4	20.2	16.5	15.9	17.2	17.2	15.4	14.4	16.2	21.9	18.4	15.3	14.5	14.6	17.8	13.3
4.10 Suicide rate (Female)	2011 - 13	4.0	- x	- x	- x	- x	4.5	- x	4.2	- x	- x	4.4	- x	6.3	- x	- x	- x	- x	- x	- x	- x	- x	- x	- x	- x
4.11 Emergency readmissions within 30 days of discharge from hospital (Persons)	2011/12	11.8	13.7	14.0	11.3	11.7	11.2	11.3	10.7	14.0	13.5	12.3	12.9	12.5	12.8	13.0	12.8	11.9	13.2	12.5	12.9	11.0	13.1	12.8	12.5
4.11 Emergency readmissions within 30 days of discharge from hospital (Male)	2011/12	12.1	14.9	14.4	12.2	12.3	11.0	11.5	11.0	14.7	13.8	12.7	13.9	13.1	13.3	13.2	13.4	12.2	14.1	13.0	12.4	11.6	13.7	13.2	12.8
4.11 Emergency readmissions within 30 days of discharge from hospital (Female)	2011/12	11.5	12.5	13.7	10.3	11.2	11.3	11.1	10.4	13.4	13.2	11.9	12.1	11.9	12.3	12.9	12.1	11.7	12.5	11.9	13.3	10.5	12.6	12.5	12.2
4.12i Preventable sight loss - age related macular degeneration (AMD)	2012/13	104.4	121.1	85.9	101.4	80.4	99.6	86.0	97.6	158.1	131.0	103.6	127.6	84.7	87.5	86.9	96.2	125.1	148.2	52.6	52.8	74.6	103.0	66.1	131.1
4.12ii Preventable sight loss - glaucoma	2012/13	12.5	- *	10.5	13.3	9.6	11.5	8.3	10.7	17.4	19.0	9.4	11.5	12.7	11.4	10.9	16.2	11.6	19.2	8.6	5.4	7.8	13.4	7.3	16.1
4.12iii Preventable sight loss - diabetic eye disease	2012/13	3.5	4.9	4.1	5.1	- *	2.8	2.1	6.8	- *	- *	2.9	2.7	1.8	3.2	2.8	- *	2.9	7.9	2.5	3.7	- *	2.9	3.7	2.5
4.12iv Preventable sight loss - sight loss certifications	2012/13	42.3	54.8	50.0	44.8	43.0	44.1	38.2	56.7	56.5	45.9	46.3	39.0	28.6	32.8	35.4	39.6	54.1	61.9	31.0	19.5	31.5	44.2	33.6	56.2

Comparison with respect to England value / goal



Note: \* - Disclosure control applied, x - Value Missing

## Healthcare and premature mortality continued

Indicator	Period	England	Blackburn	Blackpool	Bolton	Bury	Chesh East	Ch W & Ches	Cumbria	Halton	Knowsley	Lancs	Liverpool	Manchester	Oldham	Rochdale	Salford	Sefton	St. Helens	Stockport	Tameside	Trafford	Warrington	Wigan	Wirral
4.13 Health related quality of life for older people	2012/13	0.726	0.693	0.701	0.701	0.716	0.758	0.734	0.743	0.699	0.636	0.724	0.652	0.662	0.697	0.685	0.686	0.699	0.671	0.745	0.690	0.736	0.713	0.691	0.716
4.14i Hip fractures in people aged 65 and over	2012/13	568.1	587.3	565.7	604.6	551.3	562.1	547.0	599.0	553.1	808.4	560.8	653.2	682.9	584.9	710.3	656.1	574.7	629.6	513.5	592.6	499.5	577.7	579.9	590.6
4.14ii Hip fractures in people aged 65 and over - aged 65-79	2012/13	237.3	192.9	272.5	280.2	263.0	220.5	194.7	232.5	196.4	345.8	241.6	319.5	394.7	291.0	288.8	359.8	260.5	278.9	208.3	261.9	237.6	236.7	250.5	255.0
4.14iii Hip fractures in people aged 65 and over - aged 80+	2012/13	1528	1731	1416	1545	1387	1553	1569	1662	1588	2150	1487	1621	1519	1437	1932	1515	1486	1646	1399	1551	1259	1566	1535	1564
4.15i Excess Winter Deaths Index (Single year, all ages)	Aug 2012 - Jul 2013	20.1	22.9	13.9	23.1	21.5	21.7	13.4	21.9	21.9	26.1	17.6	25.2	26.5	17.4	21.3	10.8	17.3	34.9	27.6	16.9	17.3	28.1	23.2	30.4
4.15ii Excess Winter Deaths Index (single year, ages 85+)	Aug 2012 - Jul 2013	28.2	38.0	26.1	35.9	28.9	38.9	26.3	37.3	30.6	36.2	24.6	48.1	34.7	26.1	23.3	12.0	23.0	52.0	38.4	27.1	33.3	41.3	46.5	39.8
4.15iii Excess Winter Deaths Index (3 years, all ages)	Aug 2010 - Jul 2013	17.4	23.8	16.1	18.3	16.0	21.2	17.6	15.0	15.2	17.3	15.9	17.8	17.0	16.2	18.1	7.4	16.3	20.8	17.4	14.5	19.7	17.8	19.2	20.3
4.15iv Excess Winter Deaths Index (3 years, ages 85+)	Aug 2010 - Jul 2013	24.1	32.8	26.3	27.0	15.8	32.7	22.9	20.0	28.6	22.3	22.4	33.8	23.2	20.6	25.6	15.5	20.5	32.1	23.2	26.1	27.9	23.5	41.5	28.1
4.16 Estimated diagnosis rate for people with dementia	2012/13	48.7																							

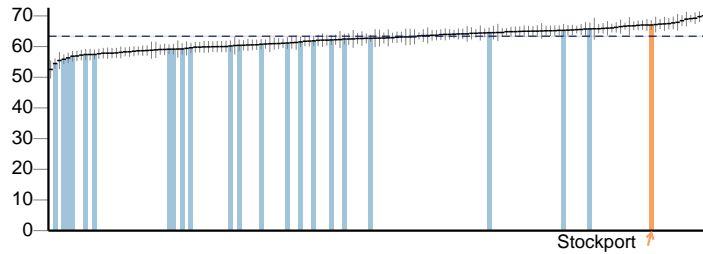
Comparison with respect to England value / goal

Lower
Similar
Higher
Better
Similar
Worse
Not compared

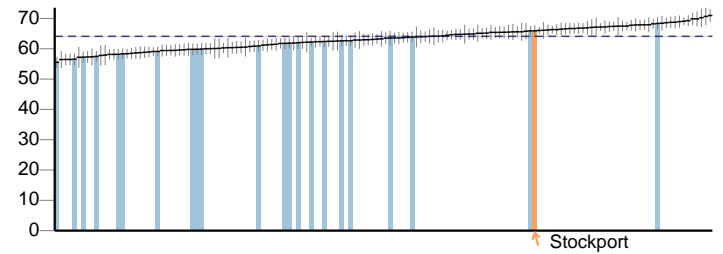
# Summary Charts

## Overarching indicators

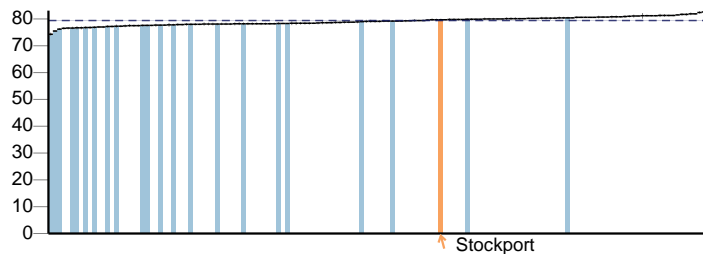
0.1i - Healthy life expectancy at birth (Male)



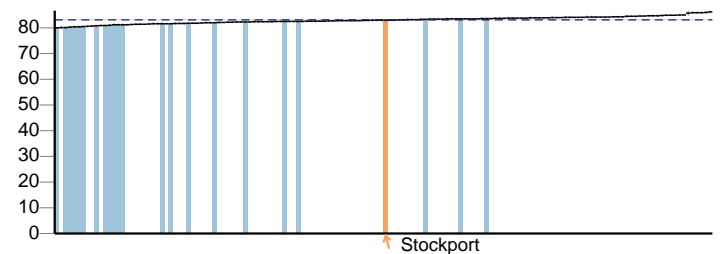
0.1i - Healthy life expectancy at birth (Female)



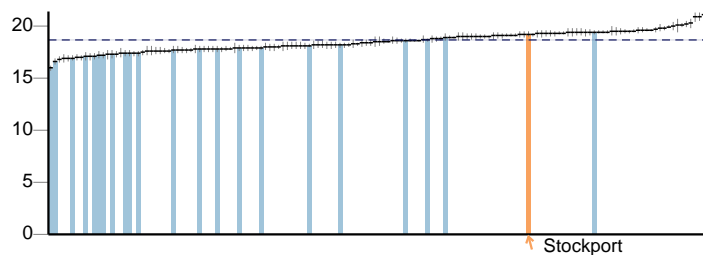
0.1ii - Life Expectancy at birth (Male)



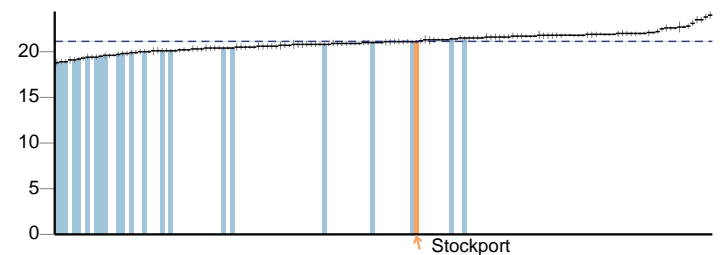
0.1ii - Life Expectancy at birth (Female)



0.1ii - Life Expectancy at 65 (Male)



0.1ii - Life Expectancy at 65 (Female)



0.2i - Slope index of inequality in life expectancy at birth based on national deprivation deciles within England (Male)

No data

0.2i - Slope index of inequality in life expectancy at birth based on national deprivation deciles within England (Female)

No data

0.2ii - Number of upper tier local authorities for which the local slope index of inequality in life expectancy (as defined in 0.2iii) has decreased (Male)

No data

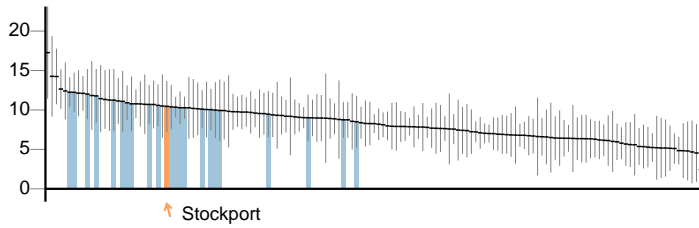
0.2ii - Number of upper tier local authorities for which the local slope index of inequality in life expectancy (as defined in 0.2iii) has decreased (Female)

No data

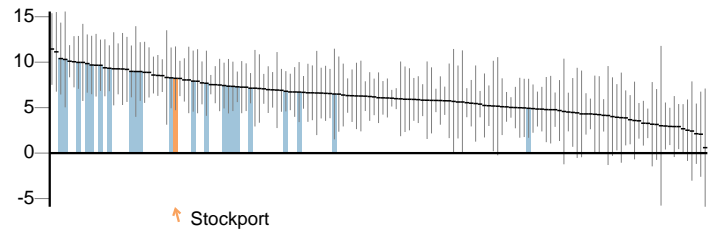
Key  England value and confidence interval ↑ Stockport  Other local authority in North West

## Overarching indicators continued

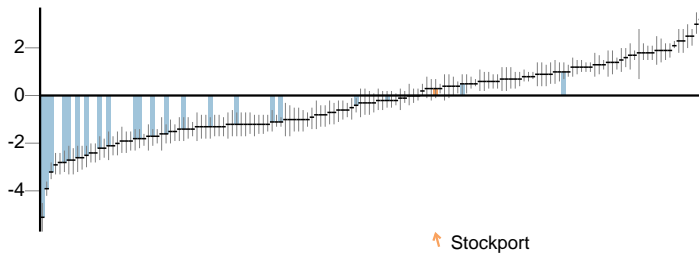
0.2iii - Slope index of inequality in life expectancy at birth within English local authorities, based on local deprivation deciles within each area (Male)



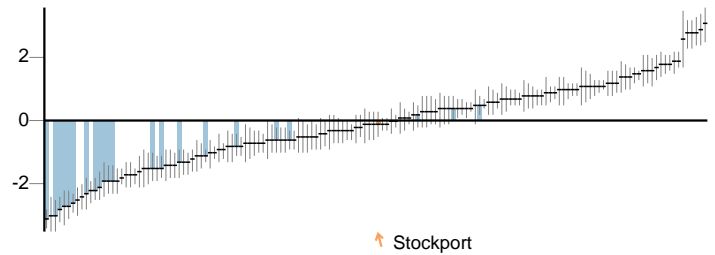
0.2iii - Slope index of inequality in life expectancy at birth within English local authorities, based on local deprivation deciles within each area (Female)



0.2iv - Gap in life expectancy at birth between each local authority and England as a whole (Male)



0.2iv - Gap in life expectancy at birth between each local authority and England as a whole (Female)



0.2v - Slope index of inequality in healthy life expectancy at birth based on national deprivation deciles within England (Male)

No data

0.2v - Slope index of inequality in healthy life expectancy at birth based on national deprivation deciles within England (Female)

No data

0.2vii - Slope index of inequality in life expectancy at birth within English regions, based on regional deprivation deciles within each area (Male)

No data

0.2vii - Slope index of inequality in life expectancy at birth within English regions, based on regional deprivation deciles within each area (Female)

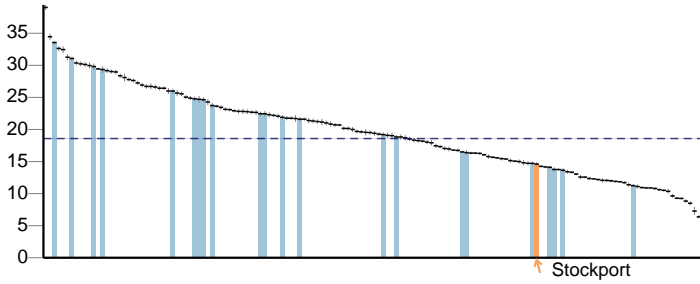
No data

Key  England value and confidence interval ↑ Stockport  Other local authority in North West

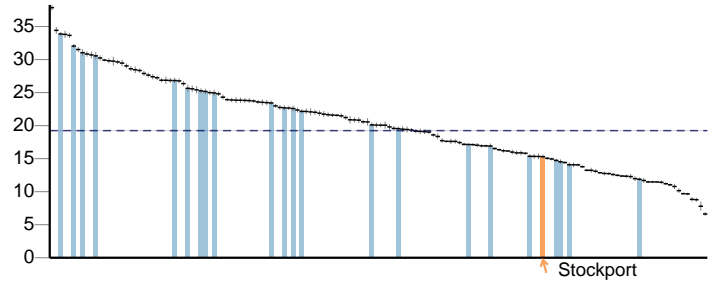
# Stockport

## Wider determinants of health

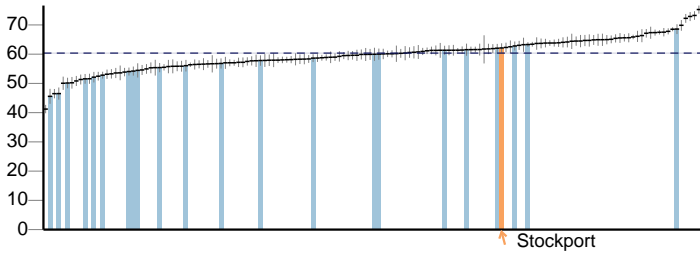
1.01i - Children in poverty (all dependent children under 20)



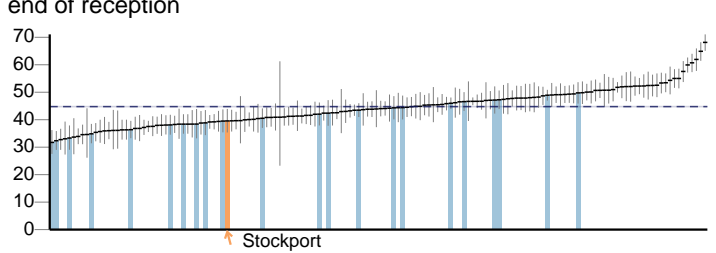
1.01ii - Children in poverty (under 16s)



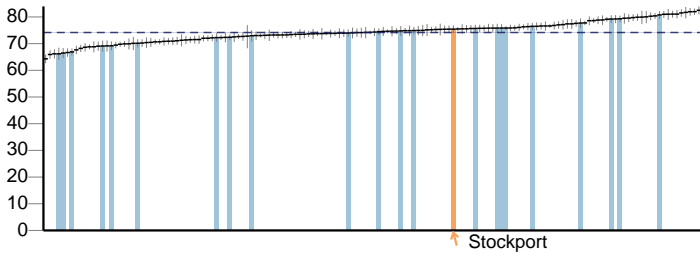
1.02i - School Readiness: The percentage of children achieving a good level of development at the end of reception



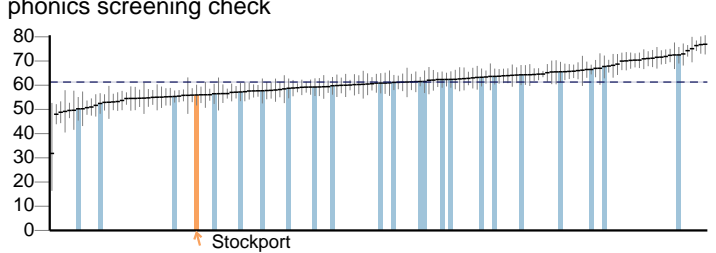
1.02i - School Readiness: The percentage of children with free school meal status achieving a good level of development at the end of reception



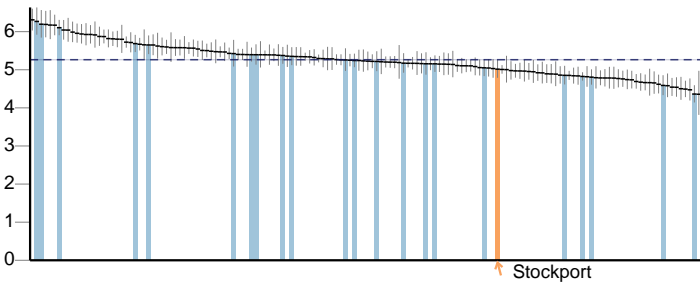
1.02ii - School Readiness: The percentage of Year 1 pupils achieving the expected level in the phonics screening check



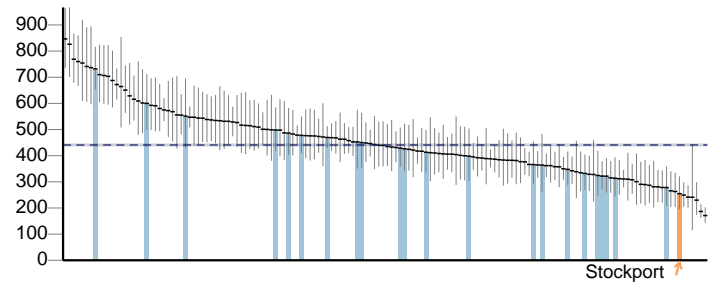
1.02ii - School Readiness: The percentage of Year 1 pupils with free school meal status achieving the expected level in the phonics screening check



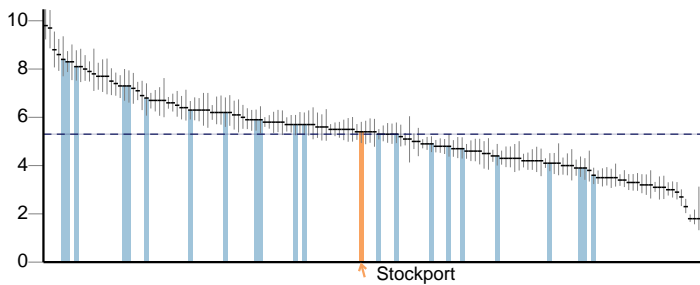
1.03 - Pupil absence



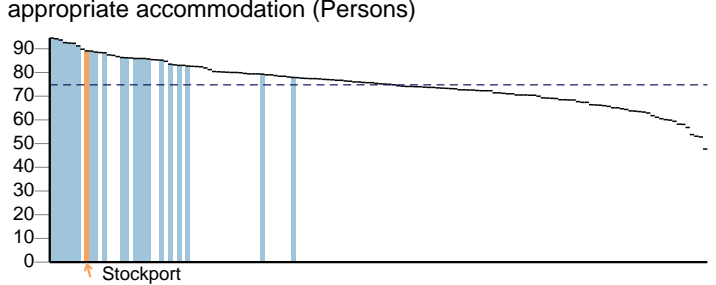
1.04 - First time entrants to the youth justice system



1.05 - 16-18 year olds not in education employment or training



1.06i - Adults with a learning disability who live in stable and appropriate accommodation (Persons)

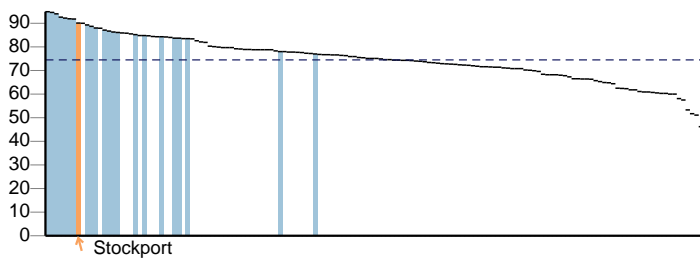


Key  England value and confidence interval ↑ Stockport  Other local authority in North West

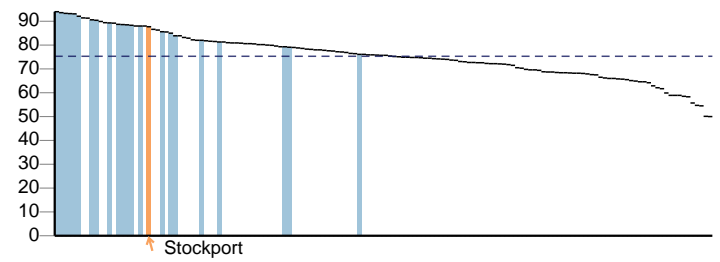


## Wider determinants of health continued

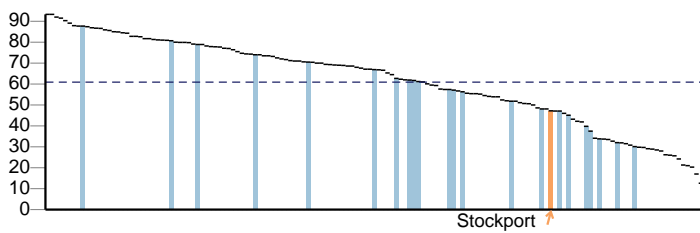
1.06i - Adults with a learning disability who live in stable and appropriate accommodation (Male)



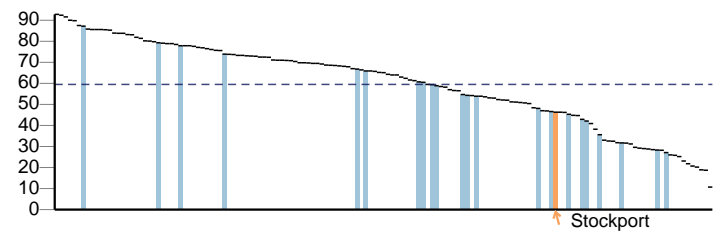
1.06i - Adults with a learning disability who live in stable and appropriate accommodation (Female)



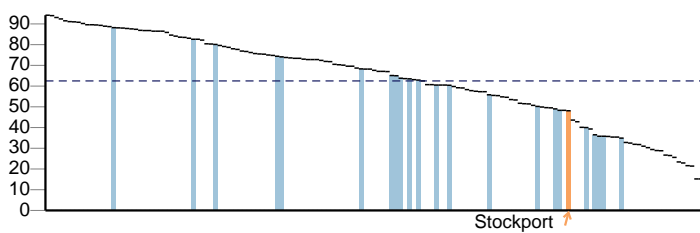
1.06ii - % of adults in contact with secondary mental health services who live in stable and appropriate accommodation (Persons)



1.06ii - % of adults in contact with secondary mental health services who live in stable and appropriate accommodation (Male)



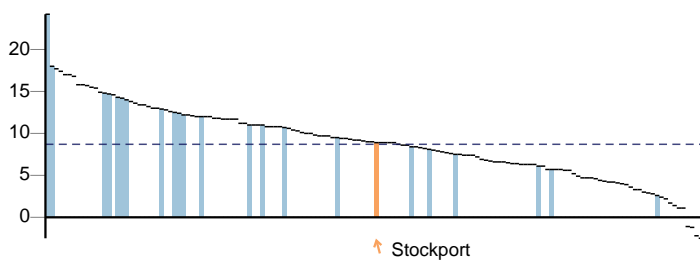
1.06ii - % of adults in contact with secondary mental health services who live in stable and appropriate accommodation (Female)



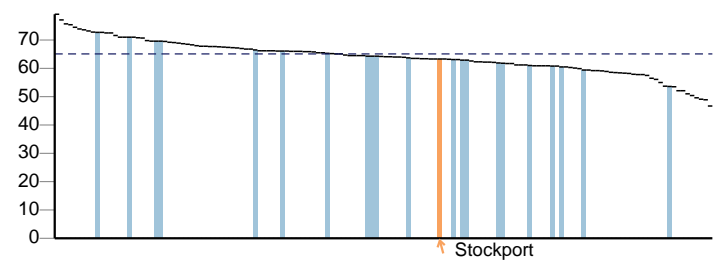
1.07 - People in prison who have a mental illness or a significant mental illness

No data

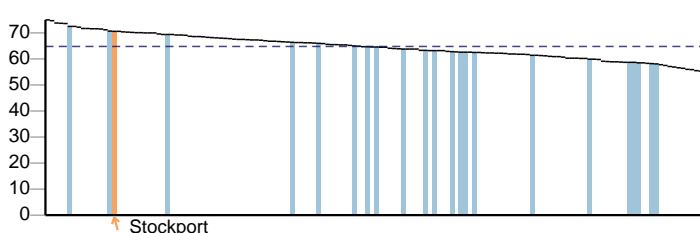
1.08i - Gap in the employment rate between those with a long-term health condition and the overall employment rate



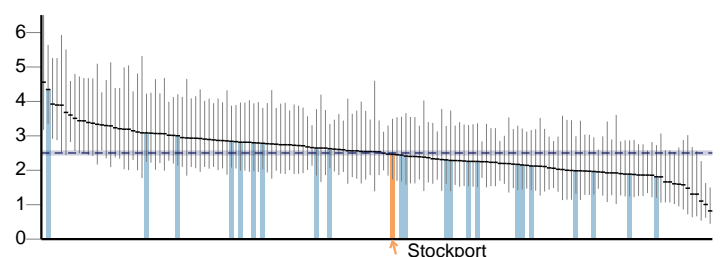
1.08ii - Gap in the employment rate between those with a learning disability and the overall employment rate



1.08iii - Gap in the employment rate for those in contact with secondary mental health services and the overall employment rate



1.09i - Sickness absence - The percentage of employees who had at least one day off in the previous week

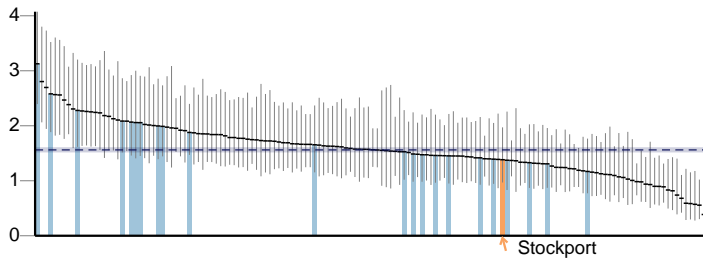


Key  England value and confidence interval ↑ Stockport  Other local authority in North West

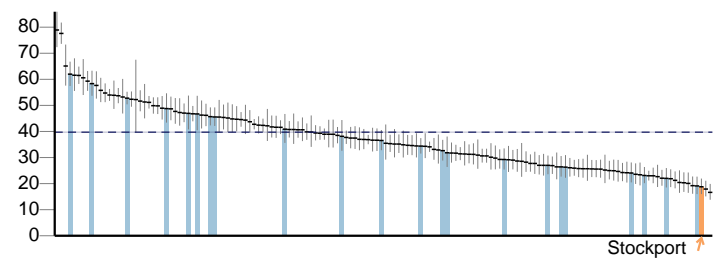
# Stockport

## Wider determinants of health continued

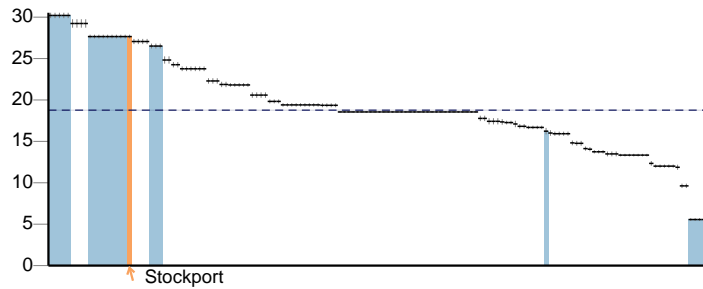
1.09ii - Sickness absence - The percent of working days lost due to sickness absence



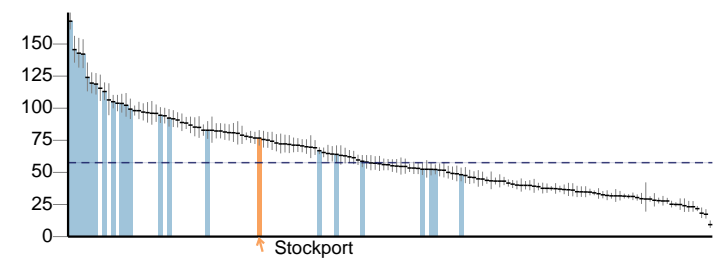
1.10 - Killed and seriously injured (KSI) casualties on England's roads



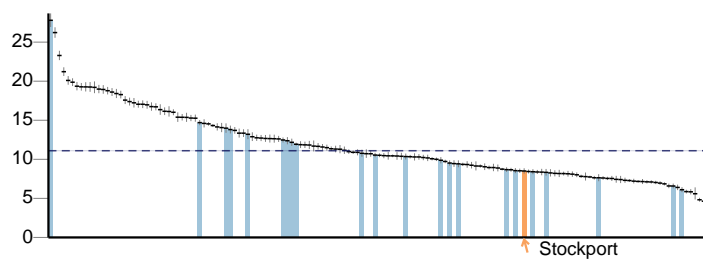
1.11 - Domestic Abuse



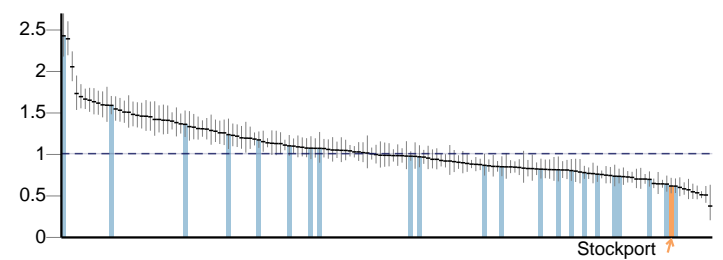
1.12i - Violent crime (including sexual violence) - hospital admissions for violence



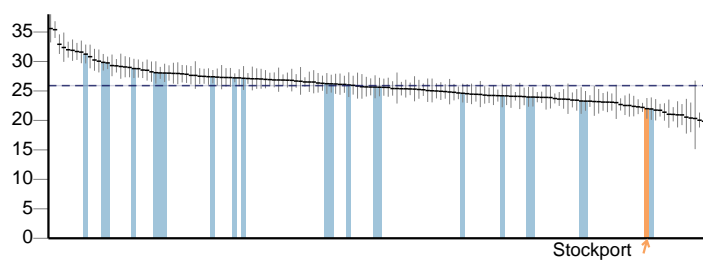
1.12ii - Violent crime (including sexual violence) - violence offences per 1,000 population



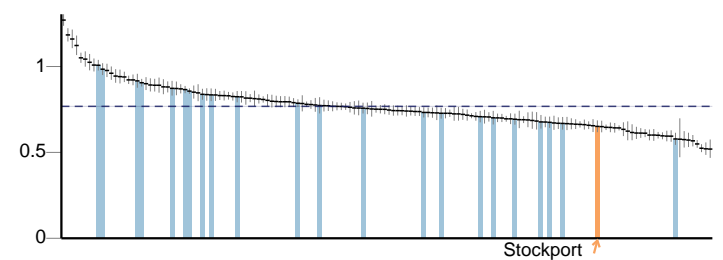
1.12iii - Violent crime (including sexual violence) - Rate of sexual offences per 1,000 population



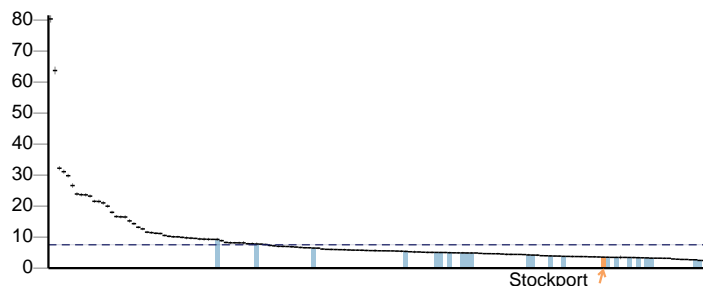
1.13i - Re-offending levels - percentage of offenders who re-offend



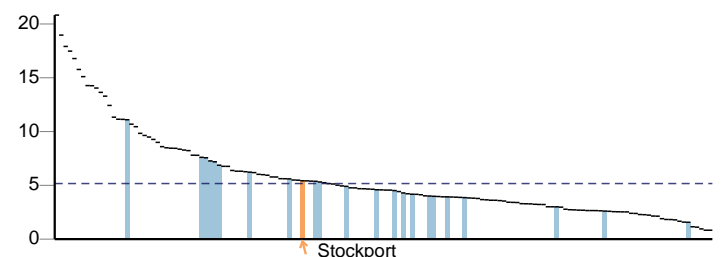
1.13ii - Re-offending levels - average number of re-offences per offender



1.14i - The rate of complaints about noise



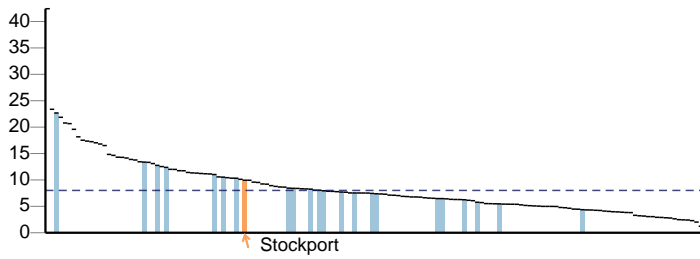
1.14ii - The percentage of the population exposed to road, rail and air transport noise of 65dB(A) or more, during the daytime



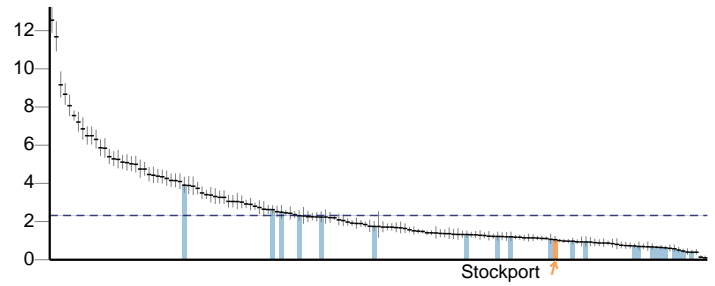
Key  England value and confidence interval ↑ Stockport  Other local authority in North West

## Wider determinants of health continued

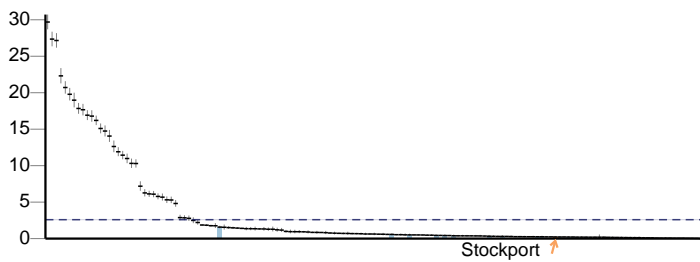
1.14iii - The percentage of the population exposed to road, rail and air transport noise of 55 dB(A) or more during the night-time



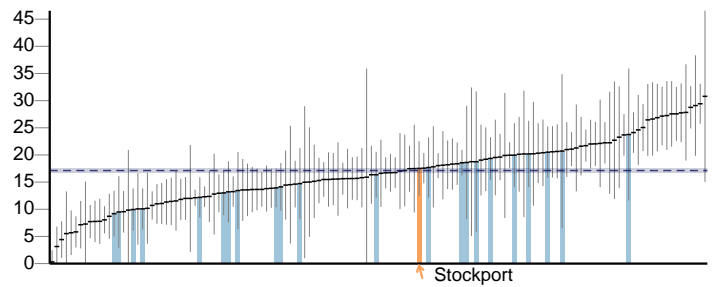
1.15i - Statutory homelessness - homelessness acceptances



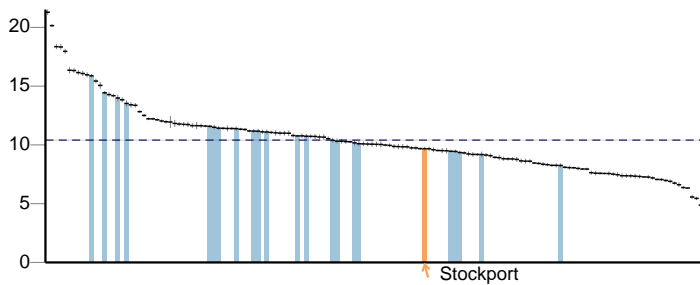
1.15ii - Statutory homelessness - households in temporary accommodation



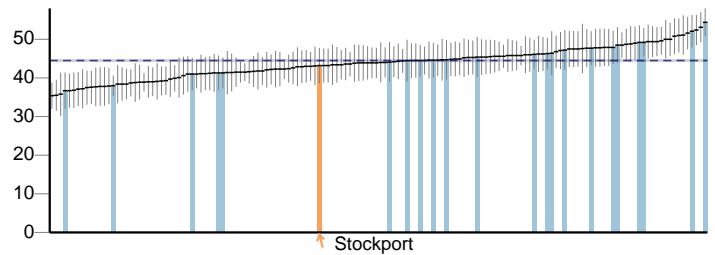
1.16 - Utilisation of outdoor space for exercise/health reasons



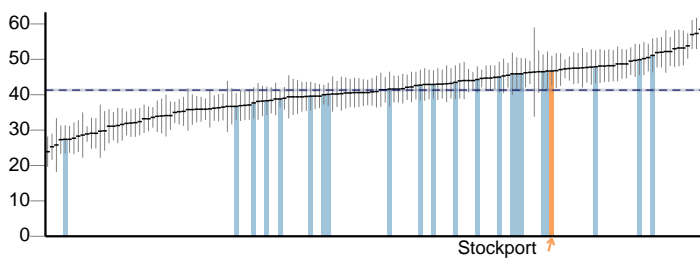
1.17 - Fuel Poverty



1.18i - Social Isolation: % of adult social care users who have as much social contact as they would like



1.18ii - Social Isolation: % of adult carers who have as much social contact as they would like



1.19i - Older people's perception of community safety - safe in local area during the day

No data

1.19ii - Older people's perception of community safety - safe in local area after dark

No data

1.19iii - Older people's perception of community safety - safe in own home at night

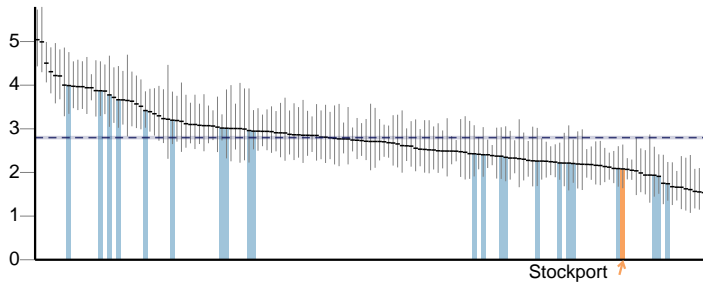
No data

Key  England value and confidence interval ↑ Stockport  Other local authority in North West

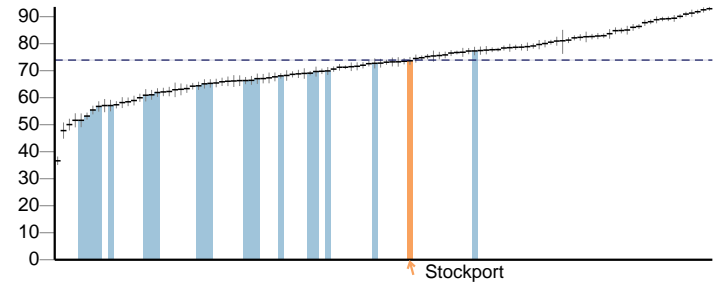
# Stockport

## Health improvement

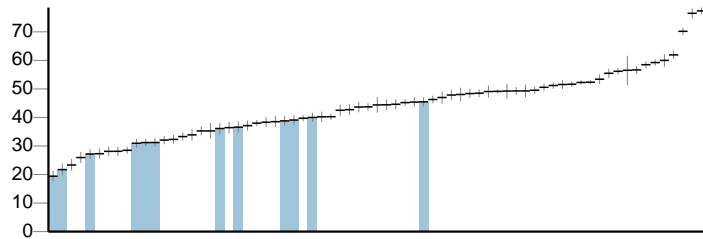
2.01 - Low birth weight of term babies



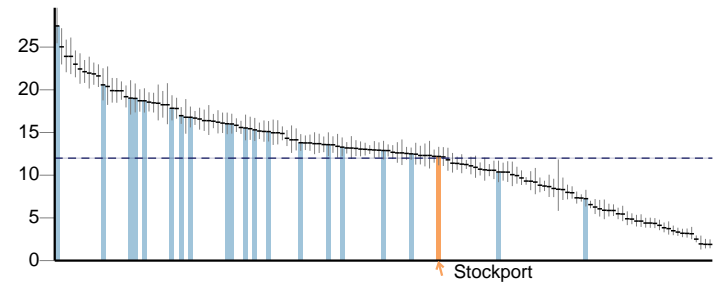
2.02i - Breastfeeding - Breastfeeding initiation



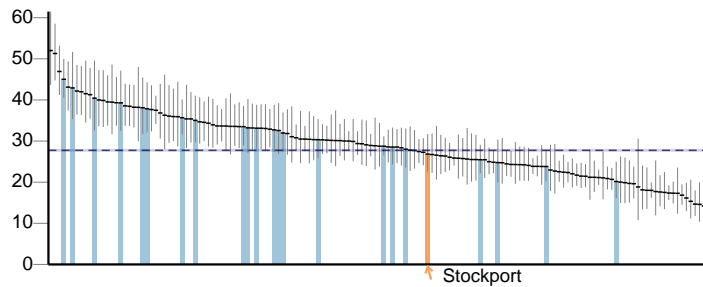
2.02ii - Breastfeeding - Breastfeeding prevalence at 6-8 weeks after birth



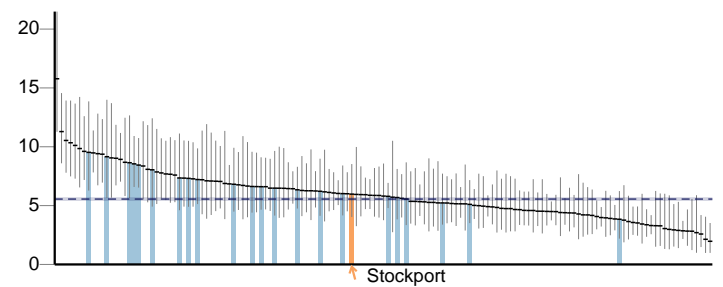
2.03 - Smoking status at time of delivery



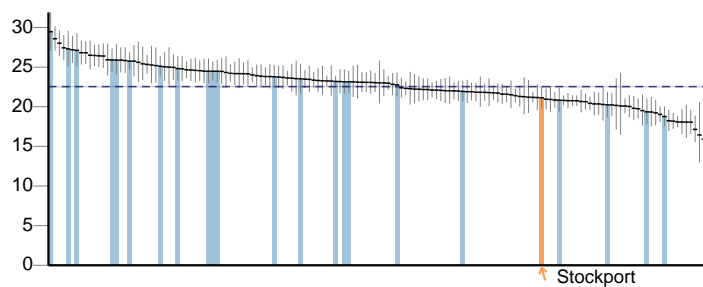
2.04 - Under 18 conceptions



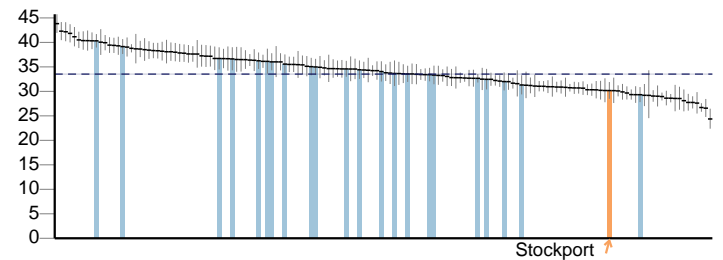
2.04 - Under 18 conceptions: conceptions in those aged under 16



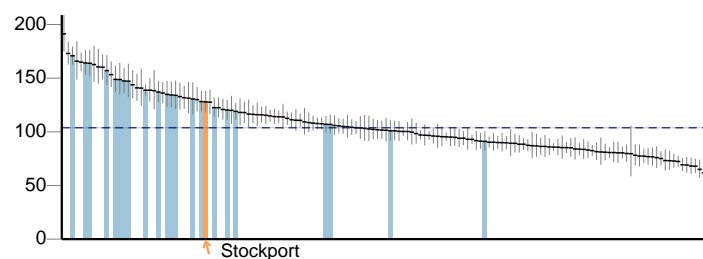
2.06i - Excess weight in 4-5 and 10-11 year olds - 4-5 year olds



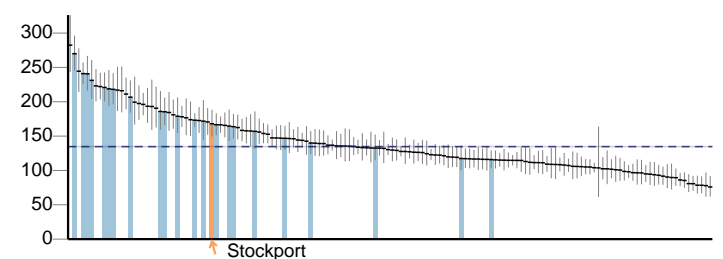
2.06ii - Excess weight in 4-5 and 10-11 year olds - 10-11 year olds



2.07i - Hospital admissions caused by unintentional and deliberate injuries in children (aged 0-14 years)



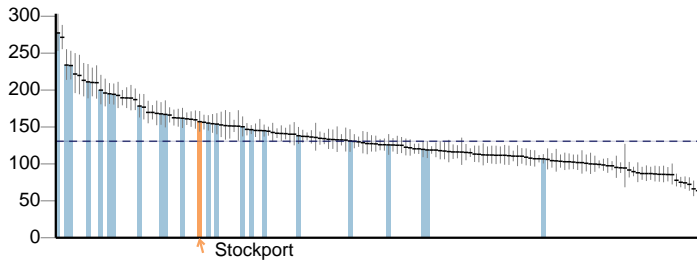
2.07i - Hospital admissions caused by unintentional and deliberate injuries in children (aged 0-4 years)



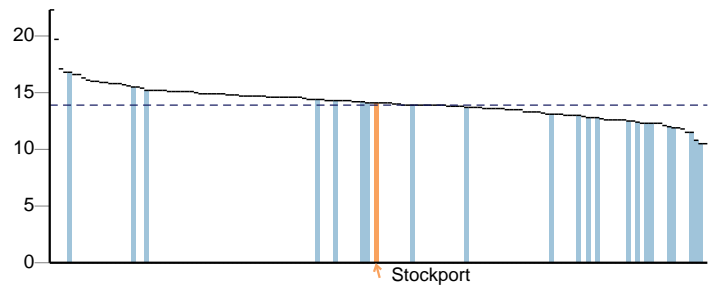
Key  England value and confidence interval ↑ Stockport  Other local authority in North West

## Health improvement continued

2.07ii - Hospital admissions caused by unintentional and deliberate injuries in young people (aged 15-24)



2.08 - Emotional well-being of looked after children



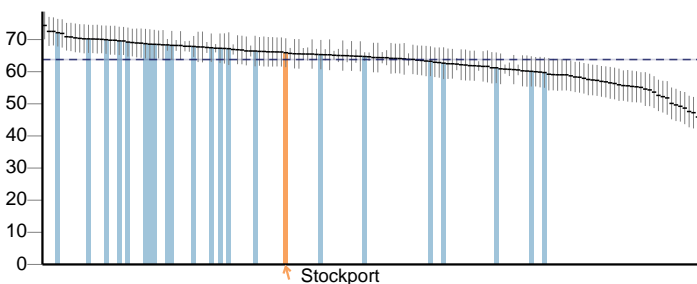
2.09ii - Smoking prevalence age 15 years - regular smokers

No data

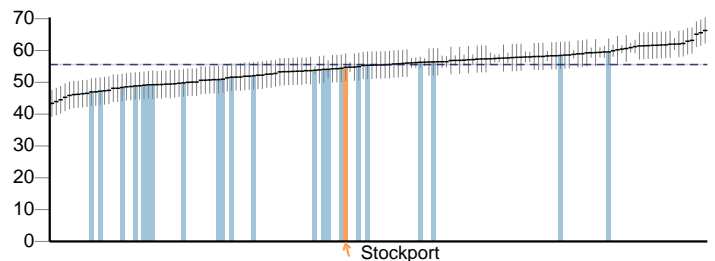
2.09iii - Smoking prevalence age 15 years - occasional smokers

No data

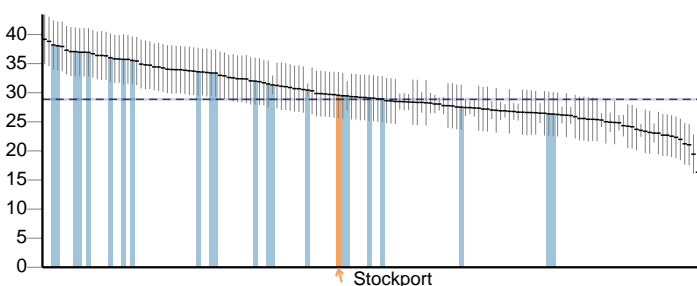
2.12 - Excess Weight in Adults



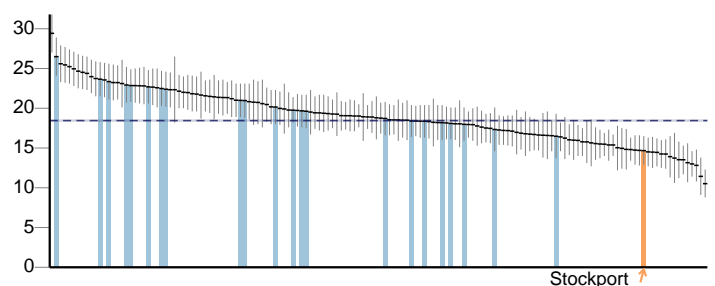
2.13i - Percentage of physically active and inactive adults - active adults



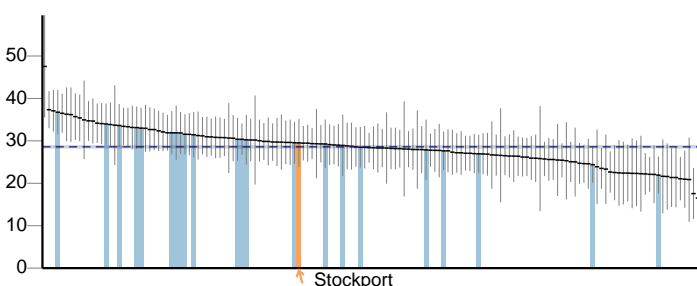
2.13ii - Percentage of active and inactive adults - inactive adults



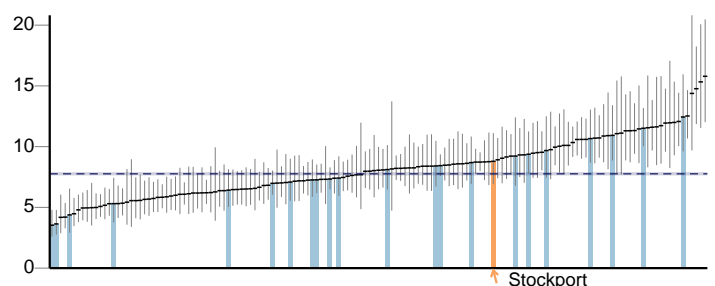
2.14 - Smoking Prevalence



2.14 - Smoking prevalence - routine & manual



2.15i - Successful completion of drug treatment - opiate users

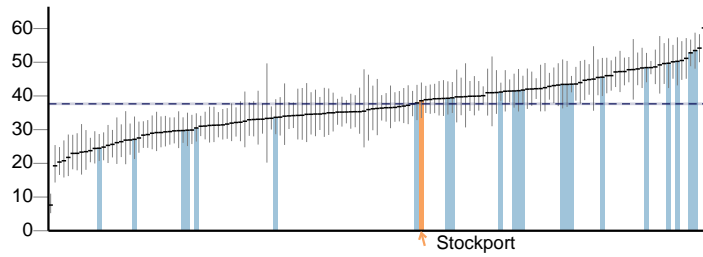


Key   England value and confidence interval ↑ Stockport  Other local authority in North West

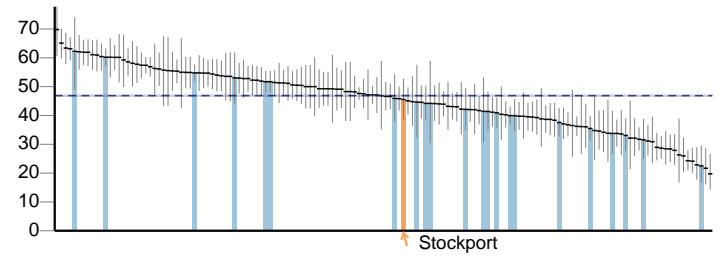
# Stockport

## Health improvement continued

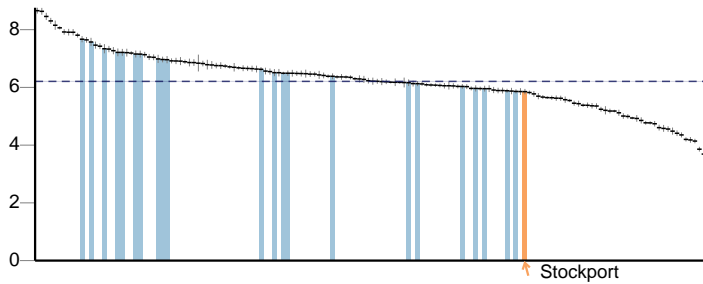
2.15ii - Successful completion of drug treatment - non-opiate users



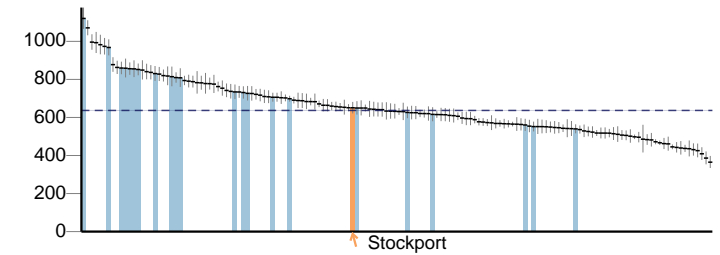
2.16 - People entering prison with substance dependence issues who are previously not known to community treatment



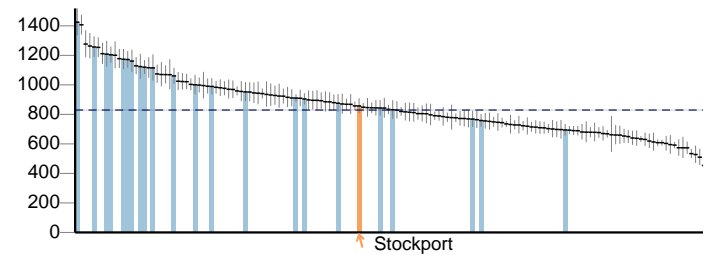
2.17 - Recorded diabetes



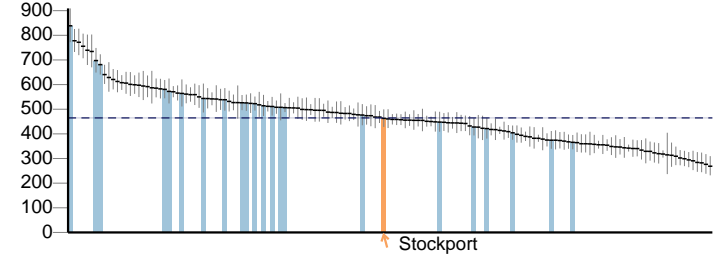
2.18 - Alcohol related admissions to hospital - narrow definition (Persons)



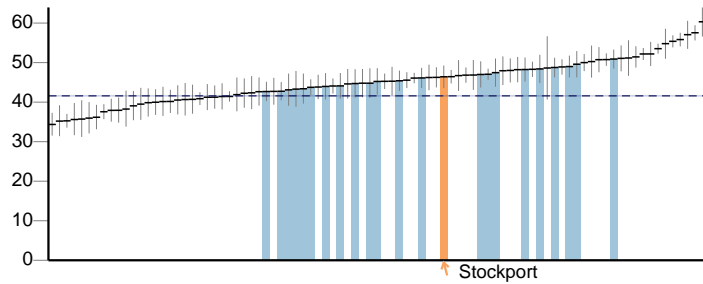
2.18 - Alcohol related admissions to hospital - narrow definition (Male)



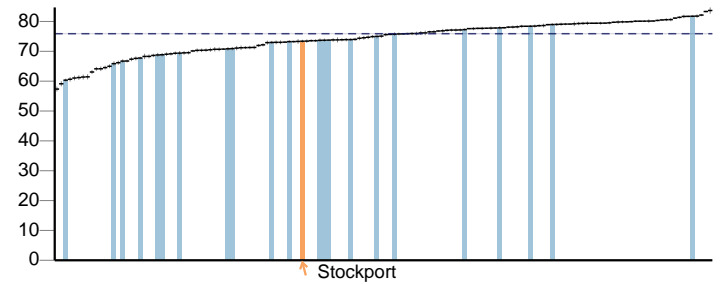
2.18 - Alcohol related admissions to hospital - narrow definition (Female)



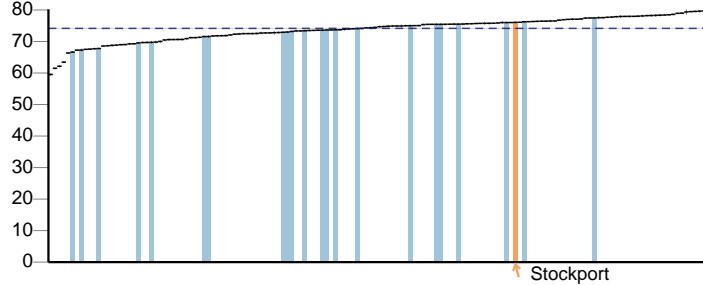
2.19 - Cancer diagnosed at early stage (Experimental Statistics)



2.20i - Cancer screening coverage - breast cancer



2.20ii - Cancer screening coverage - cervical cancer



2.21i - Antenatal infectious disease screening – HIV coverage

No data

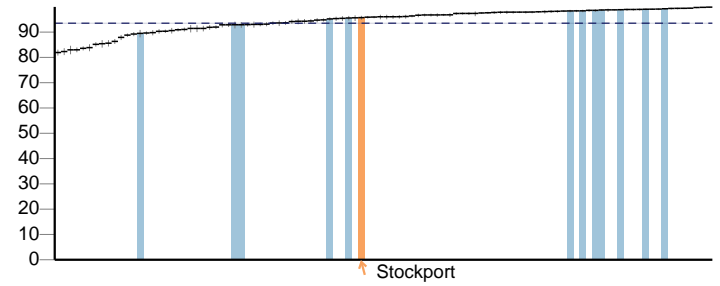
Key  England value and confidence interval ↑ Stockport  Other local authority in North West

## Health improvement continued

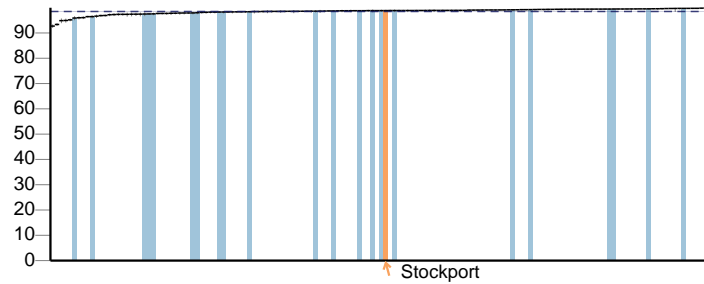
2.21iii - Antenatal Sickle Cell and Thalassaemia Screening - coverage

No data

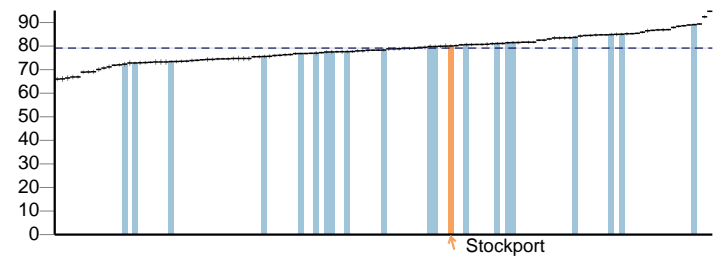
2.21iv - Newborn bloodspot screening - coverage



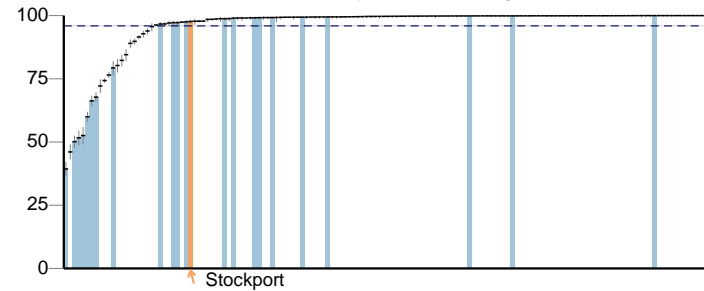
2.21v - Newborn Hearing screening - Coverage



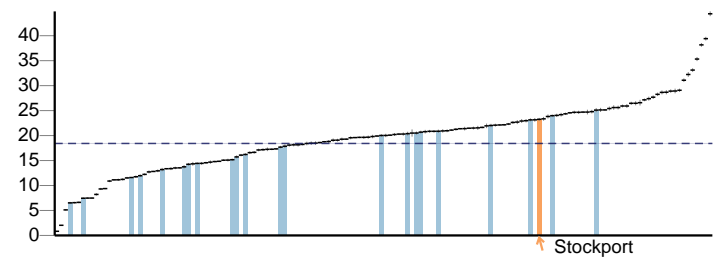
2.21vii - Access to non-cancer screening programmes - diabetic retinopathy



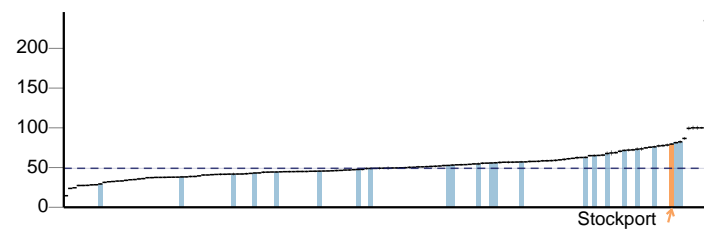
2.21viii - Abdominal Aortic Aneurysm Screening



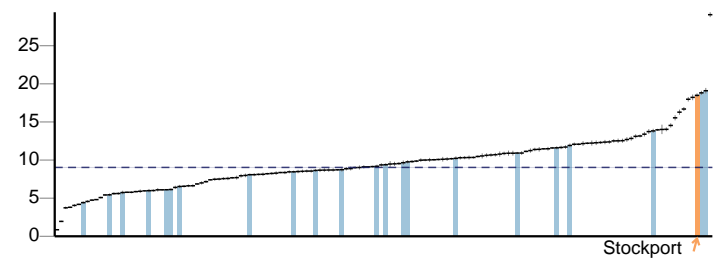
2.22iii - Cumulative % of the eligible population aged 40-74 offered an NHS Health Check



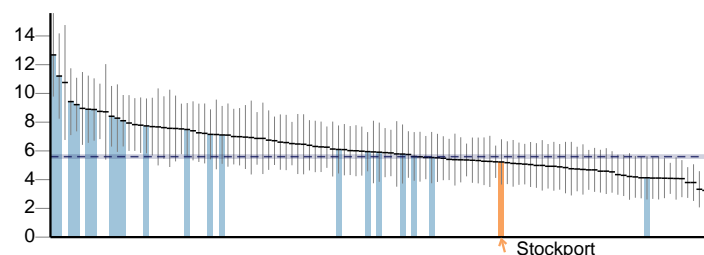
2.22iv - Cumulative % of the eligible population aged 40-74 offered an NHS Health Check who received an NHS Health Check



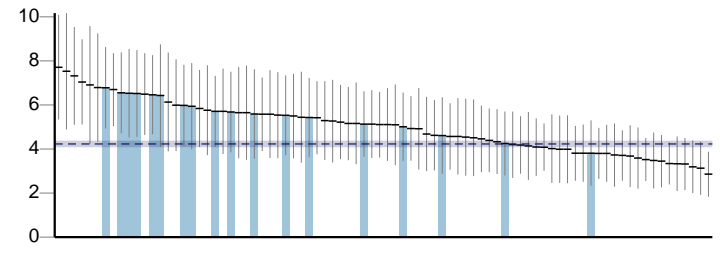
2.22v - Cumulative % of the eligible population aged 40-74 who received an NHS Health check



2.23i - Self-reported well-being - people with a low satisfaction score



2.23ii - Self-reported well-being - people with a low worthwhile score

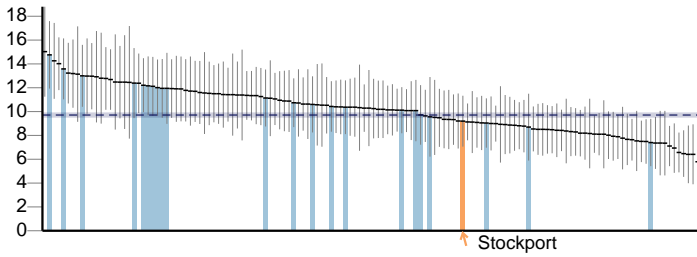


Key  England value and confidence interval ↑ Stockport  Other local authority in North West

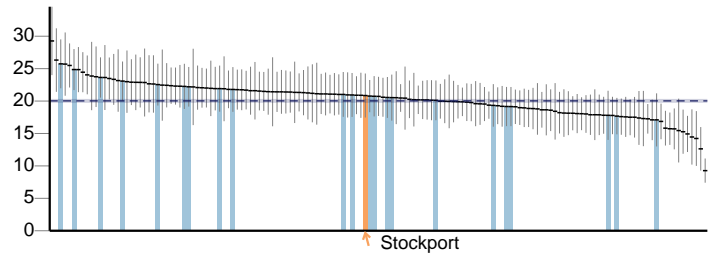
# Stockport

## Health improvement continued

2.23iii - Self-reported well-being - people with a low happiness score



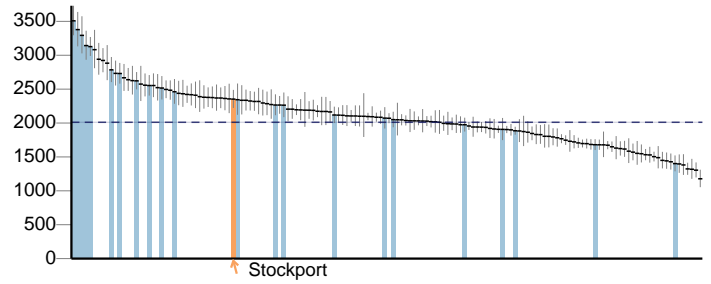
2.23iv - Self-reported well-being - people with a high anxiety score



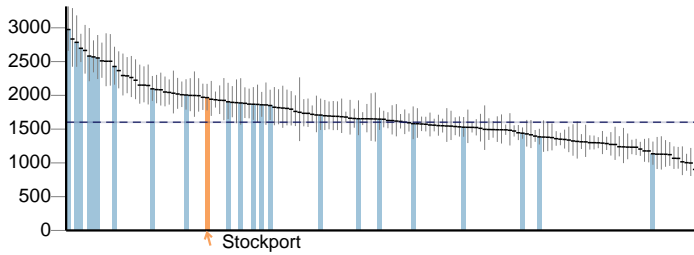
2.23v - Average Warwick-Edinburgh Mental Well-Being Scale (WEMWBS) score

No data

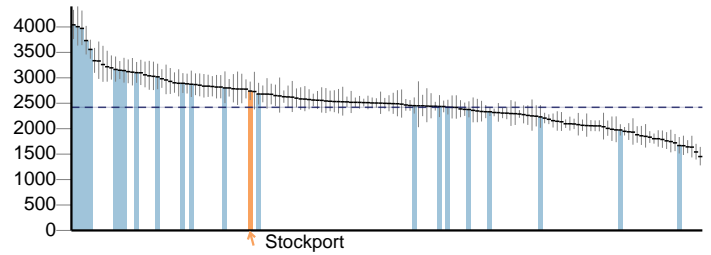
2.24i - Injuries due to falls in people aged 65 and over (Persons)



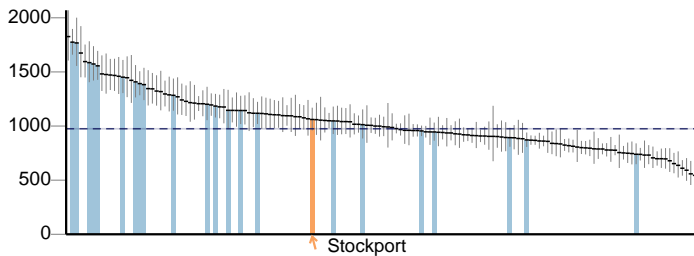
2.24i - Injuries due to falls in people aged 65 and over (males/females) (Male)



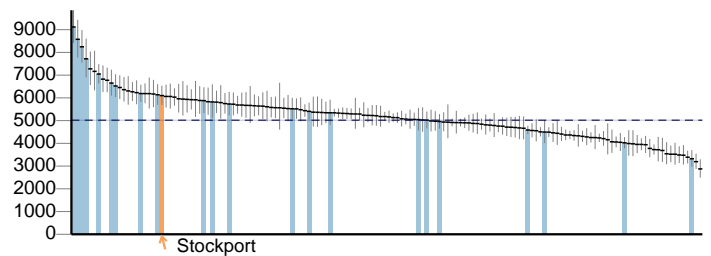
2.24i - Injuries due to falls in people aged 65 and over (males/females) (Female)



2.24ii - Injuries due to falls in people aged 65 and over - aged 65-79



2.24iii - Injuries due to falls in people aged 65 and over - aged 80+

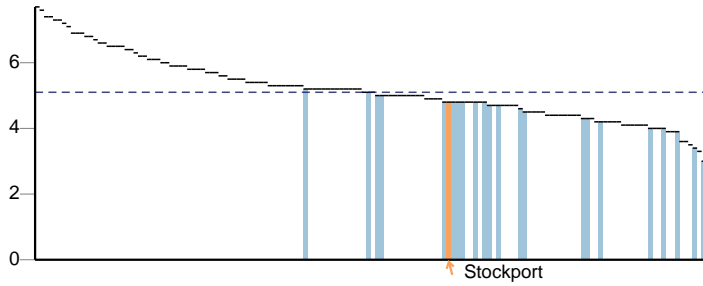


Key  England value and confidence interval ↑ Stockport  Other local authority in North West

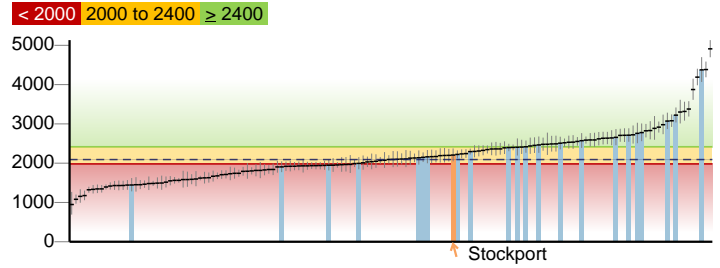


## Health protection

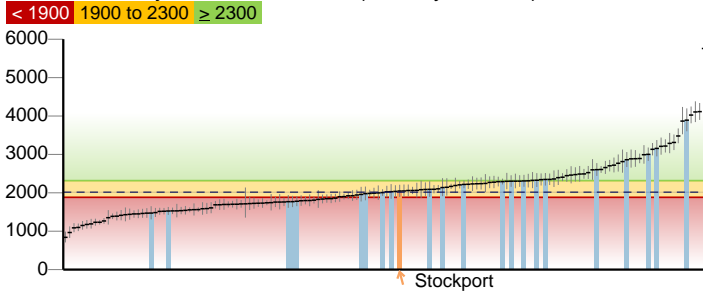
3.01 - Fraction of mortality attributable to particulate air pollution



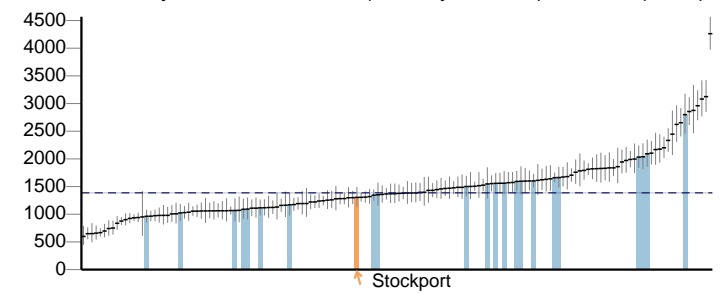
3.02i - Chlamydia detection rate (15-24 year olds) - Old NCSP data



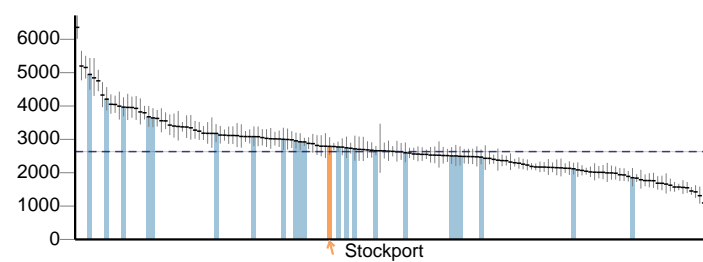
3.02ii - Chlamydia detection rate (15-24 year olds) - CTAD



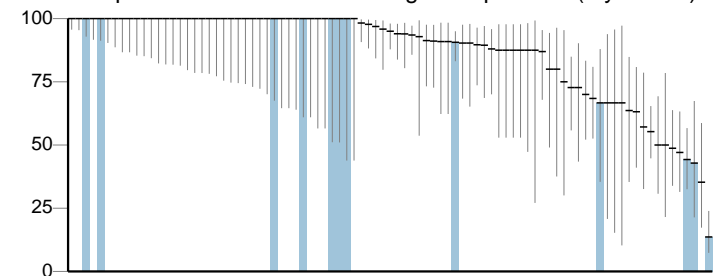
3.02ii - Chlamydia detection rate (15-24 year olds) - CTAD (Male)



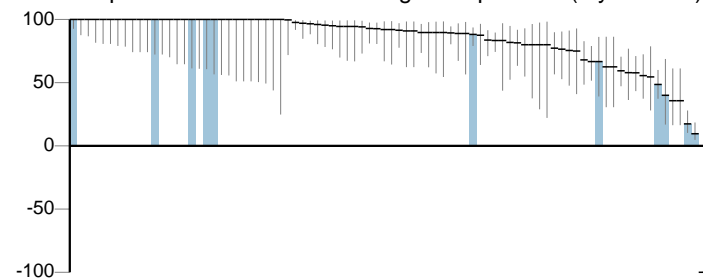
3.02ii - Chlamydia detection rate (15-24 year olds) - CTAD (Female)



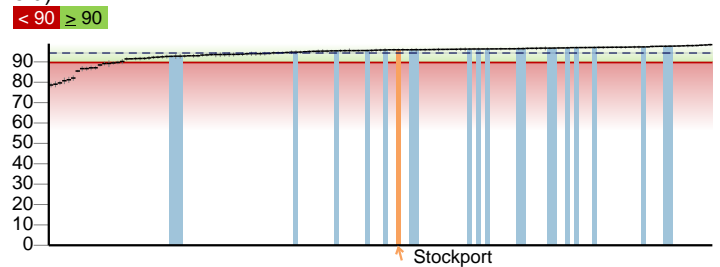
3.03i - Population vaccination coverage - Hepatitis B (1 year old)



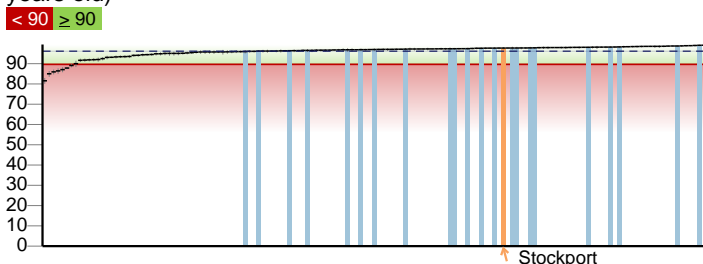
3.03i - Population vaccination coverage - Hepatitis B (2 years old)



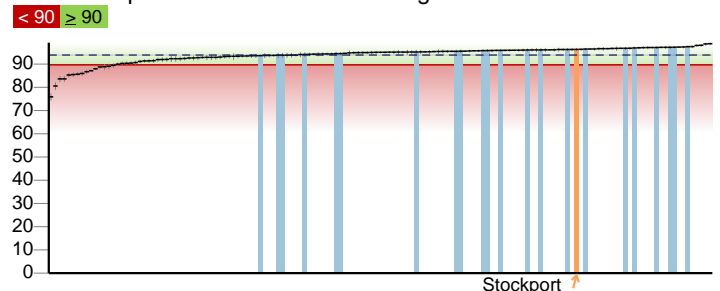
3.03iii - Population vaccination coverage - Dtap / IPV / Hib (1 year old)



3.03iii - Population vaccination coverage - Dtap / IPV / Hib (2 years old)



3.03iv - Population vaccination coverage - MenC



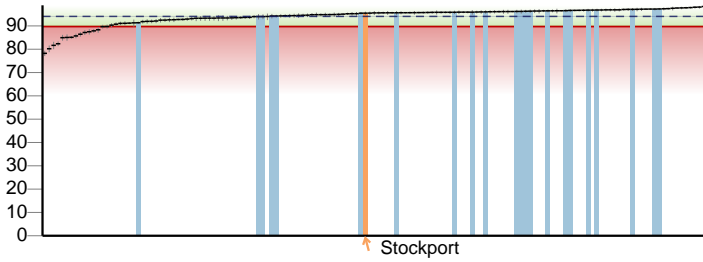
Key   England value and confidence interval ↑ Stockport   Other local authority in North West

# Stockport

## Health protection continued

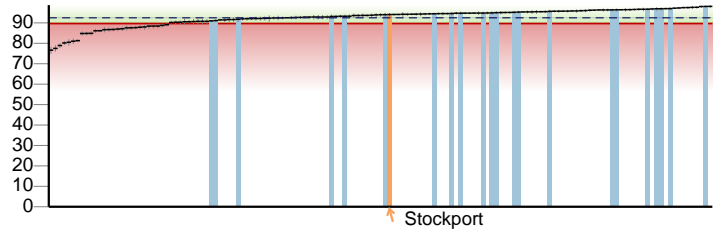
3.03v - Population vaccination coverage - PCV

< 90 ≥ 90



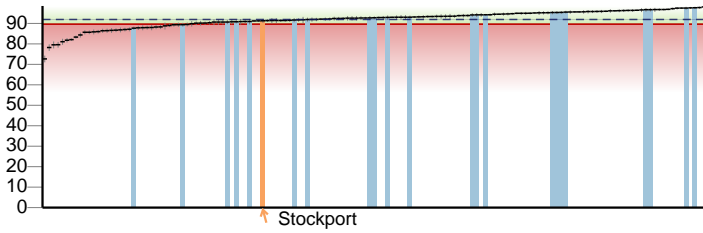
3.03vi - Population vaccination coverage - Hib / MenC booster (2 years old)

< 90 ≥ 90



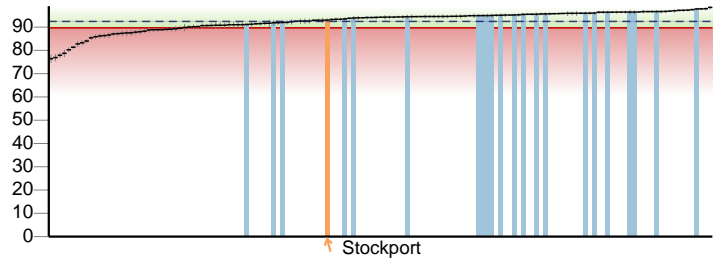
3.03vi - Population vaccination coverage - Hib / Men C booster (5 years)

< 90 ≥ 90



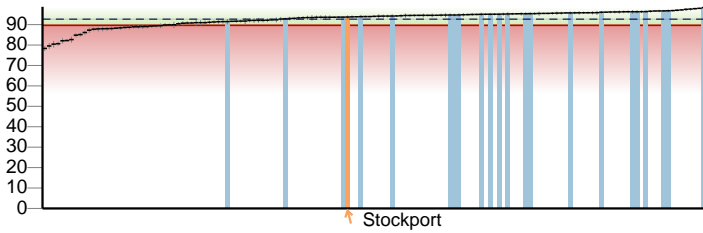
3.03vii - Population vaccination coverage - PCV booster

< 90 ≥ 90



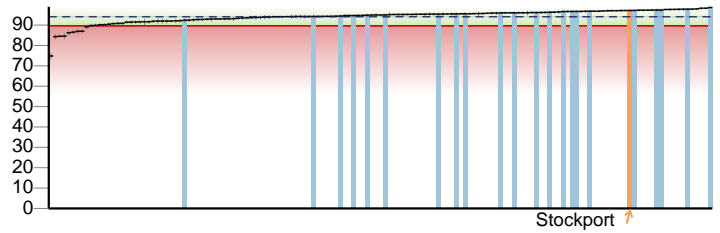
3.03viii - Population vaccination coverage - MMR for one dose (2 years old)

< 90 ≥ 90



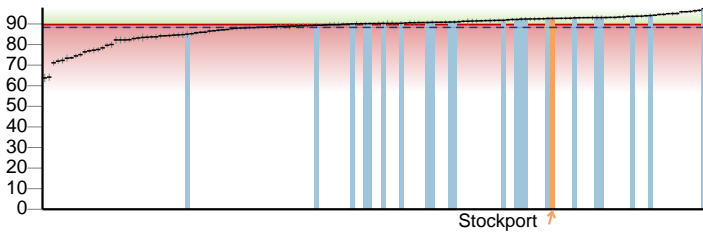
3.03ix - Population vaccination coverage - MMR for one dose (5 years old)

< 90 ≥ 90



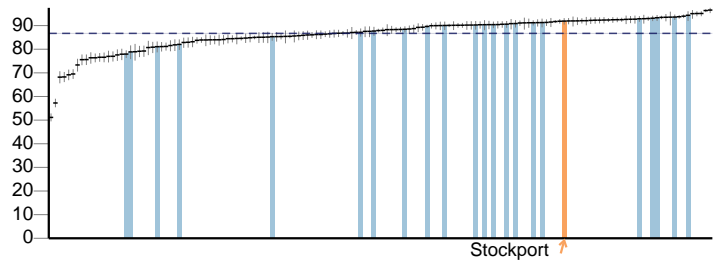
3.03x - Population vaccination coverage - MMR for two doses (5 years old)

< 90 ≥ 90



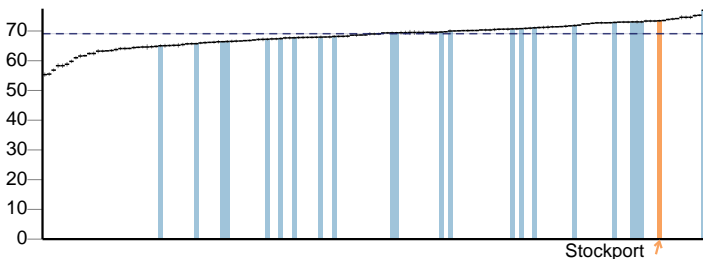
3.03xii - Population vaccination coverage - HPV

< previous years England average ≥ previous years England average



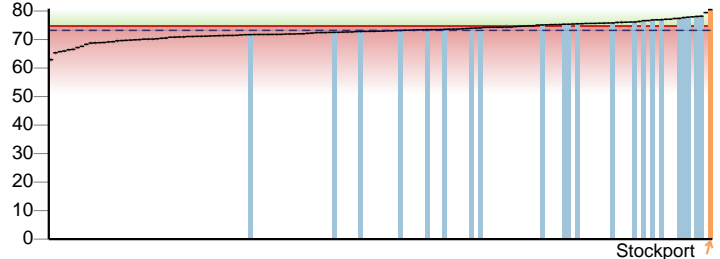
3.03xiii - Population vaccination coverage - PPV

< previous years England average ≥ previous years England average



3.03xiv - Population vaccination coverage - Flu (aged 65+)

< 75 ≥ 75

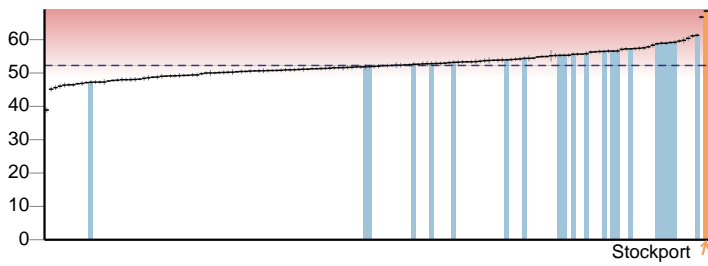


Key      England value and confidence interval ↑ Stockport      Other local authority in North West

## Health protection continued

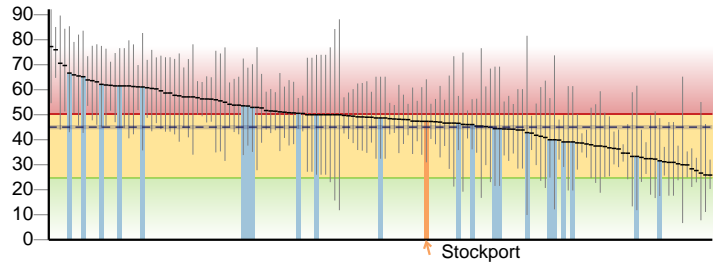
3.03xv - Population vaccination coverage - Flu (at risk individuals)

< 75 ≥ 75



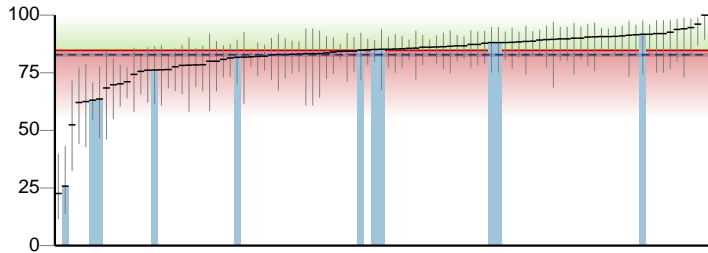
3.04 - People presenting with HIV at a late stage of infection

< 25 25 to 50 ≥ 50

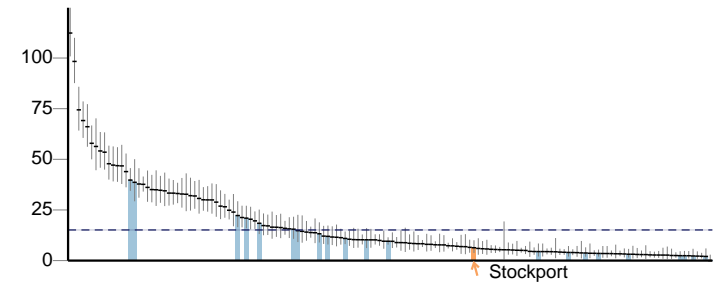


3.05i - Treatment completion for TB

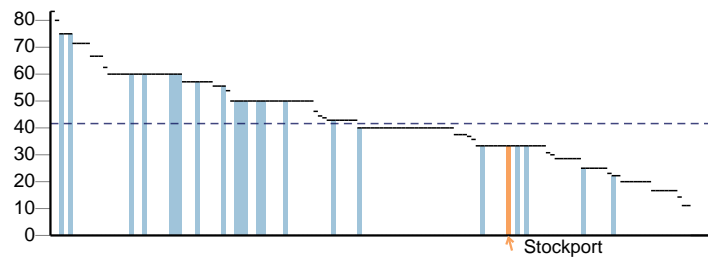
< 85 ≥ 85



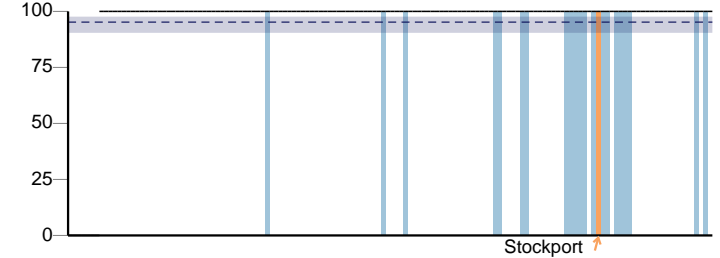
3.05ii - Incidence of TB



3.06 - NHS organisations with a board approved sustainable development management plan



3.07 - Comprehensive, agreed inter-agency plans for responding to health protection incidents and emergencies

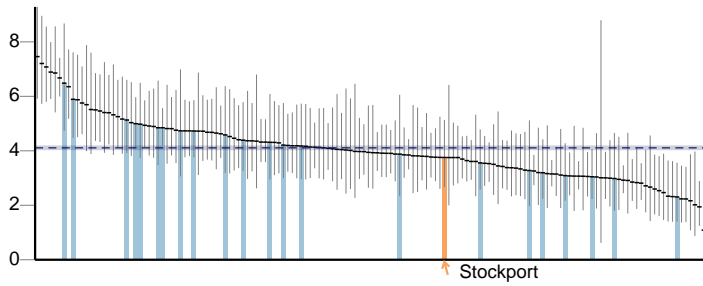


Key  England value and confidence interval ↑ Stockport  Other local authority in North West

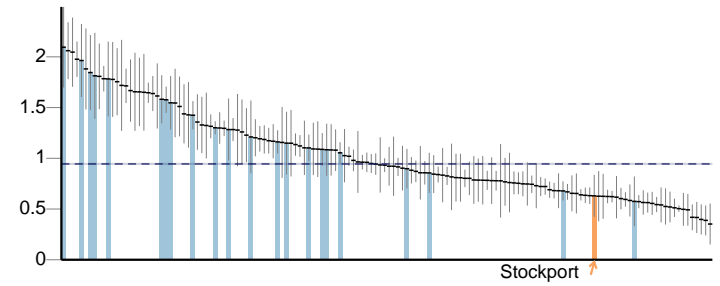
# Stockport

## Healthcare and premature mortality

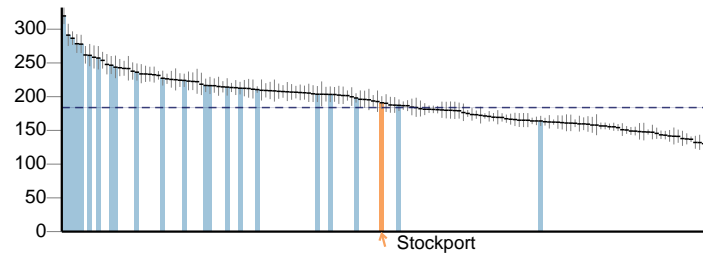
4.01 - Infant mortality



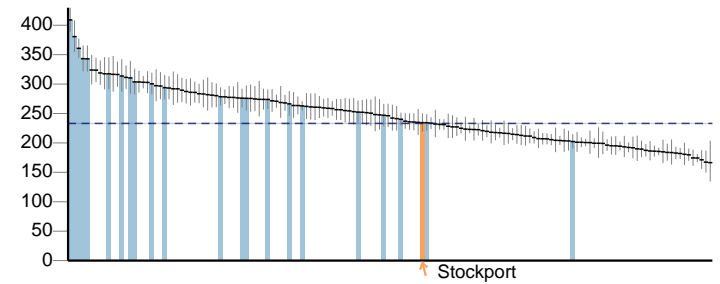
4.02 - Tooth decay in children aged 5



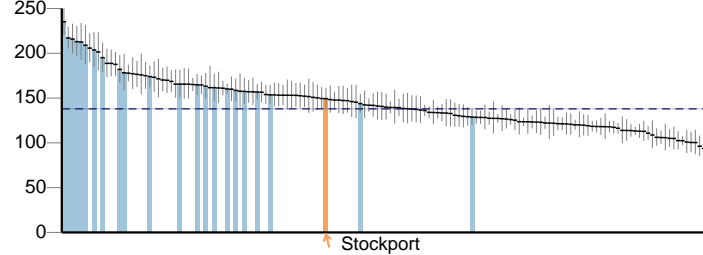
4.03 - Mortality rate from causes considered preventable (Persons)



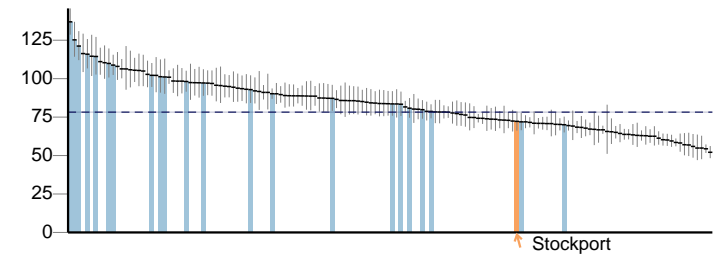
4.03 - Mortality rate from causes considered preventable (Male)



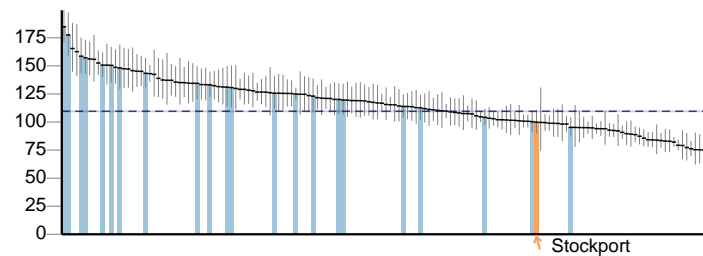
4.03 - Mortality rate from causes considered preventable (Female)



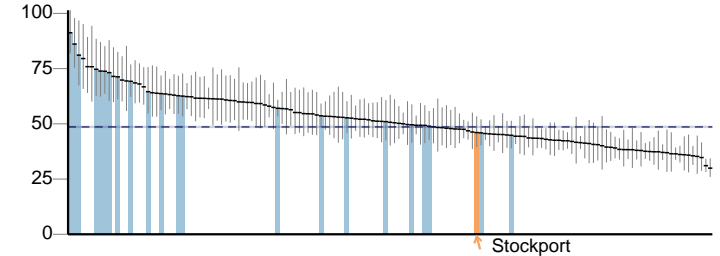
4.04i - Under 75 mortality rate from all cardiovascular diseases (Persons)



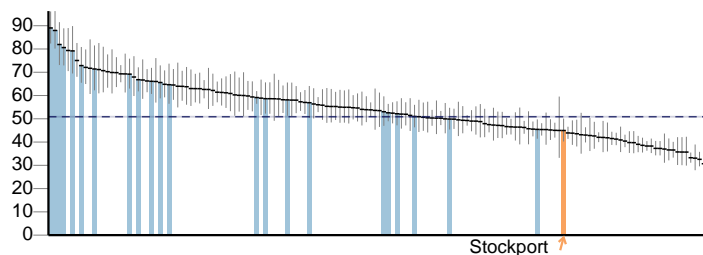
4.04i - Under 75 mortality rate from all cardiovascular diseases (Male)



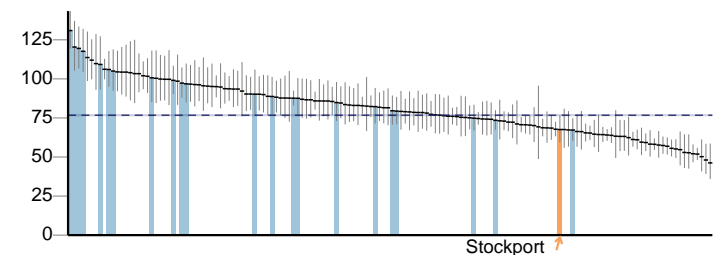
4.04i - Under 75 mortality rate from all cardiovascular diseases (Female)



4.04ii - Under 75 mortality rate from cardiovascular diseases considered preventable (Persons)



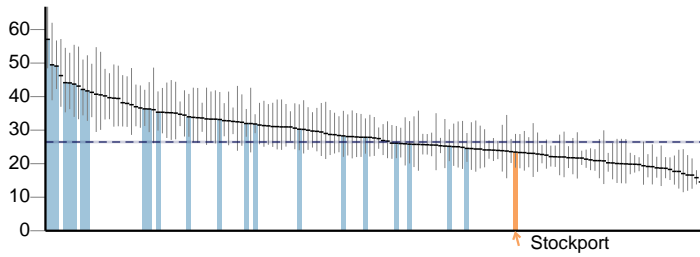
4.04ii - Under 75 mortality rate from cardiovascular diseases considered preventable (Male)



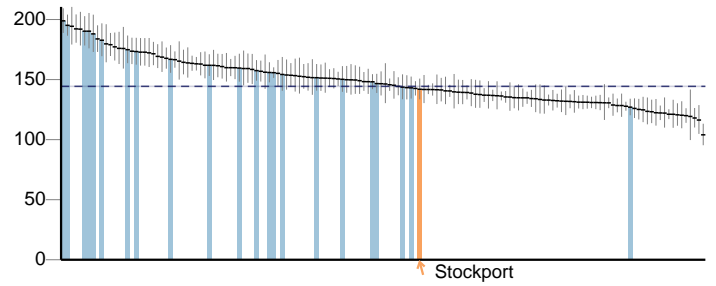
Key  England value and confidence interval ↑ Stockport  Other local authority in North West

## Healthcare and premature mortality continued

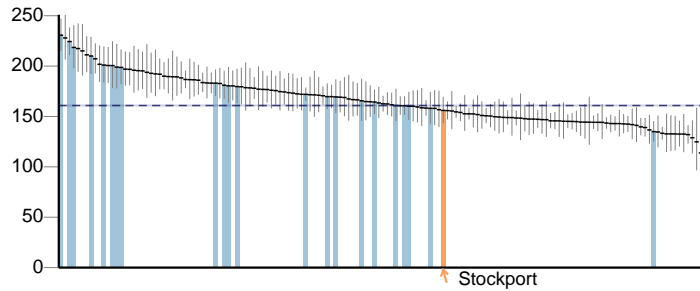
4.04ii - Under 75 mortality rate from cardiovascular diseases considered preventable (Female)



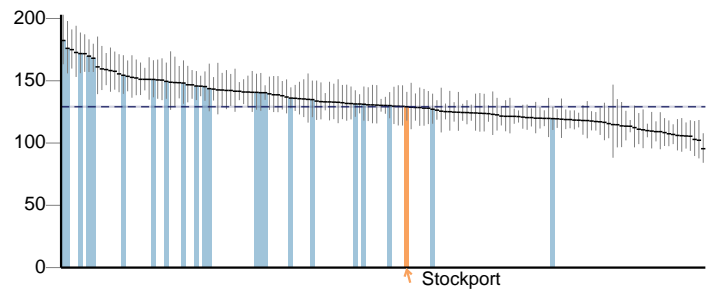
4.05i - Under 75 mortality rate from cancer (Persons)



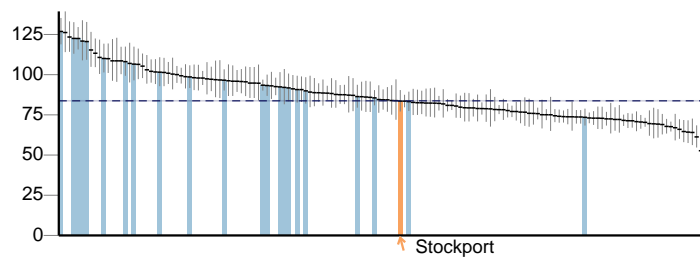
4.05i - Under 75 mortality rate from cancer (Male)



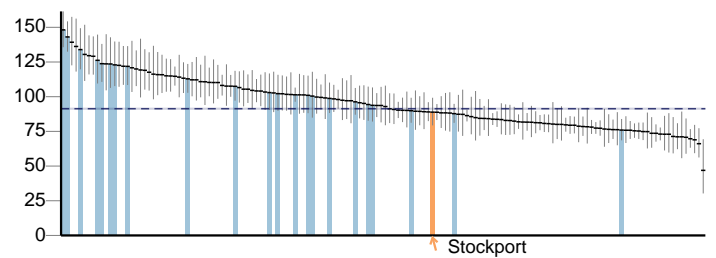
4.05i - Under 75 mortality rate from cancer (Female)



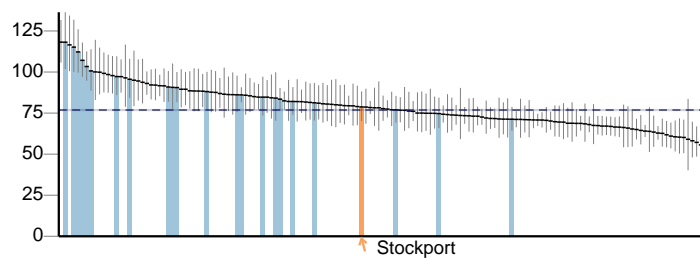
4.05ii - Under 75 mortality rate from cancer considered preventable (Persons)



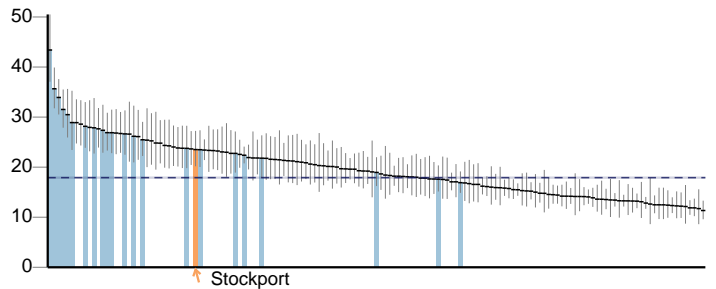
4.05ii - Under 75 mortality rate from cancer considered preventable (Male)



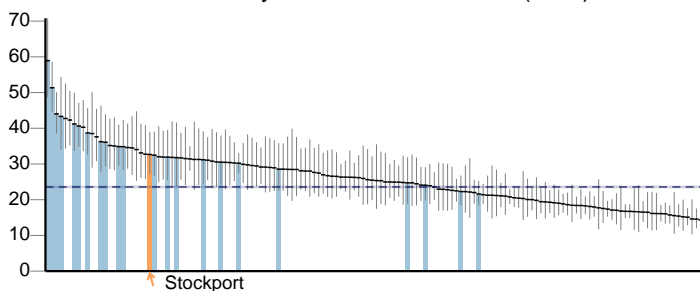
4.05ii - Under 75 mortality rate from cancer considered preventable (Female)



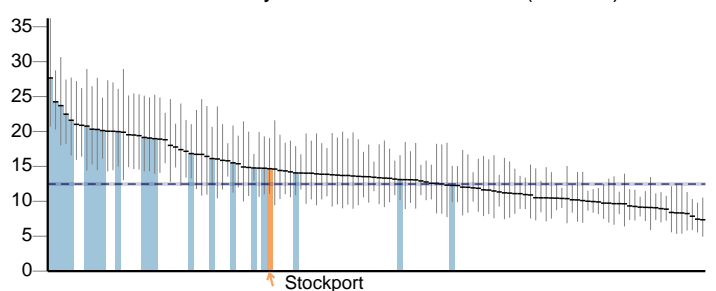
4.06i - Under 75 mortality rate from liver disease (Persons)



4.06i - Under 75 mortality rate from liver disease (Male)



4.06i - Under 75 mortality rate from liver disease (Female)

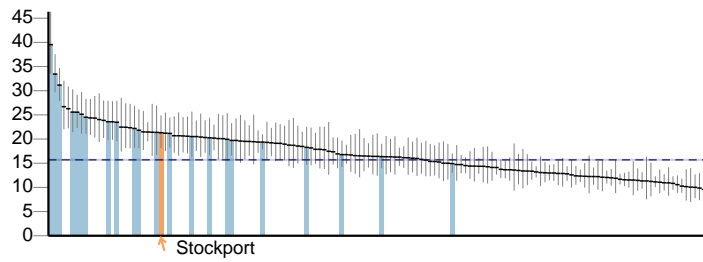


Key  England value and confidence interval ↑ Stockport  Other local authority in North West

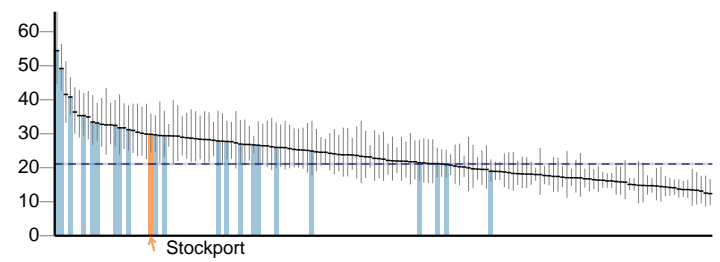
# Stockport

## Healthcare and premature mortality continued

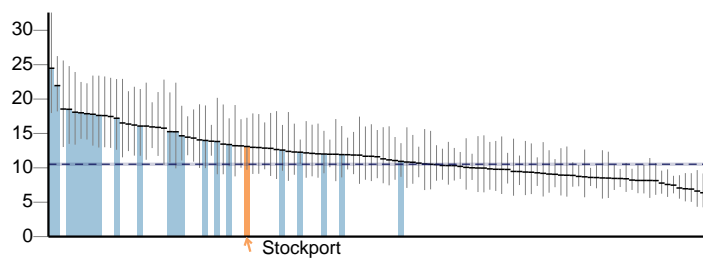
4.06ii - Under 75 mortality rate from liver disease considered preventable (Persons)



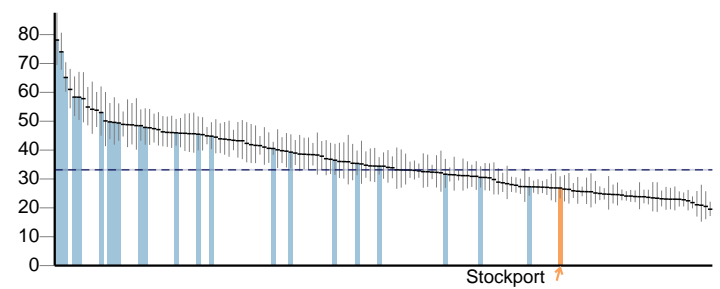
4.06ii - Under 75 mortality rate from liver disease considered preventable (Male)



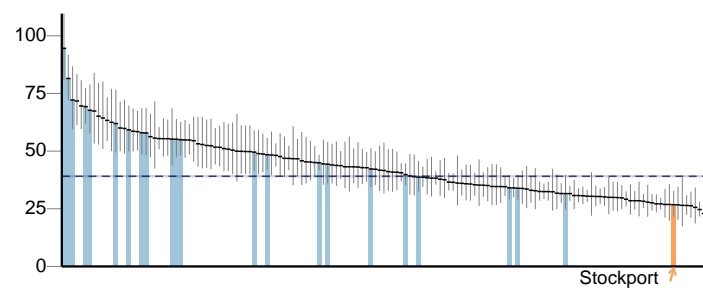
4.06ii - Under 75 mortality rate from liver disease considered preventable (Female)



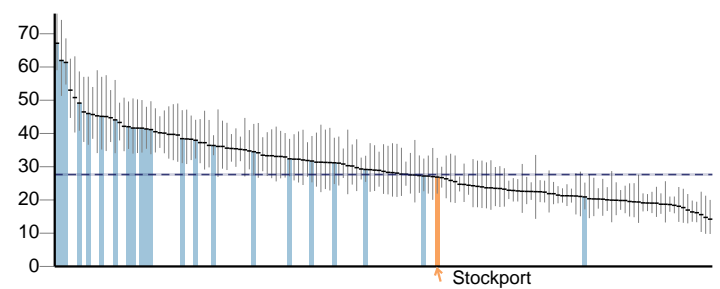
4.07i - Under 75 mortality rate from respiratory disease (Persons)



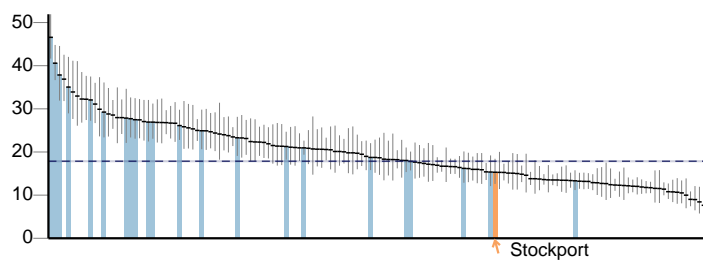
4.07i - Under 75 mortality rate from respiratory disease (Male)



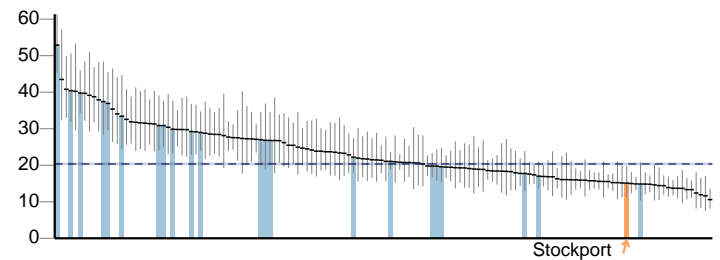
4.07i - Under 75 mortality rate from respiratory disease (Female)



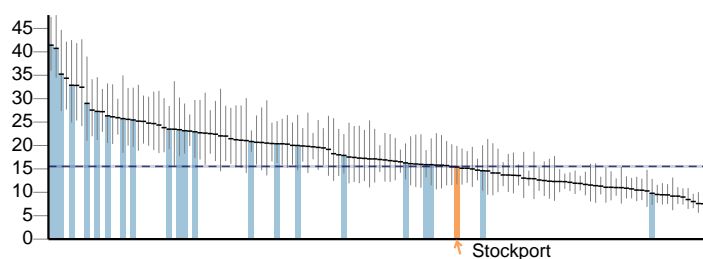
4.07ii - Under 75 mortality rate from respiratory disease considered preventable (Persons)



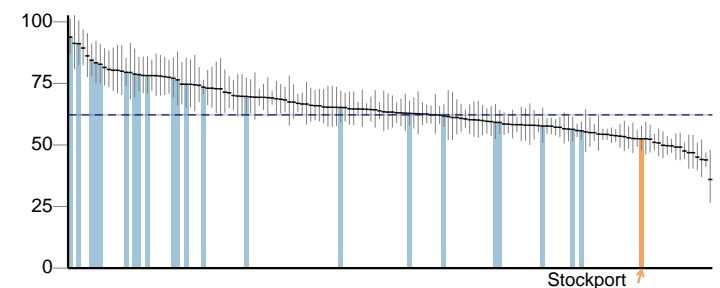
4.07ii - Under 75 mortality rate from respiratory disease considered preventable (Male)



4.07ii - Under 75 mortality rate from respiratory disease considered preventable (Female)



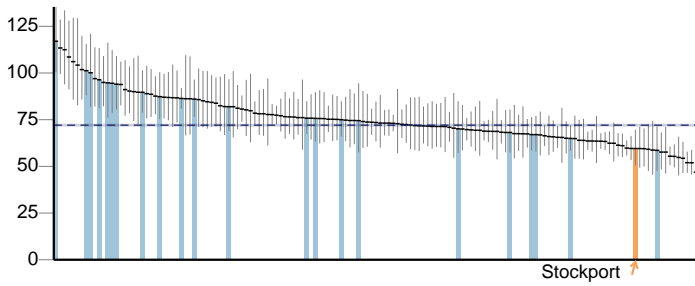
4.08 - Mortality from communicable diseases (Persons)



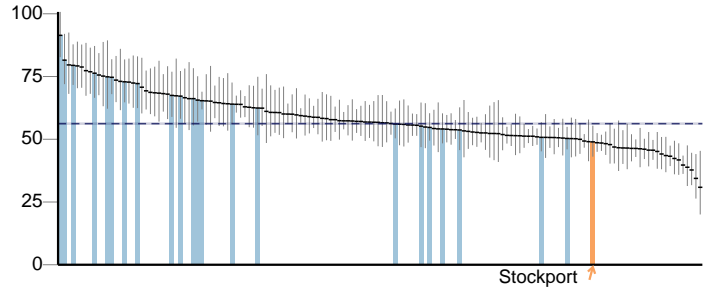
Key   England value and confidence interval ↑ Stockport   Other local authority in North West

## Healthcare and premature mortality continued

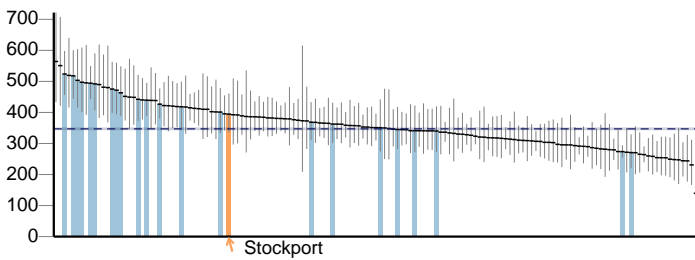
4.08 - Mortality from communicable diseases (Male)



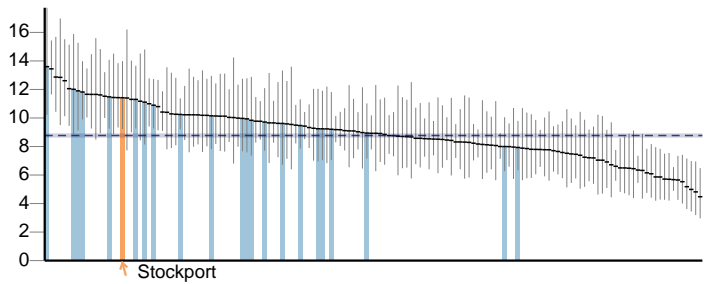
4.08 - Mortality from communicable diseases (Female)



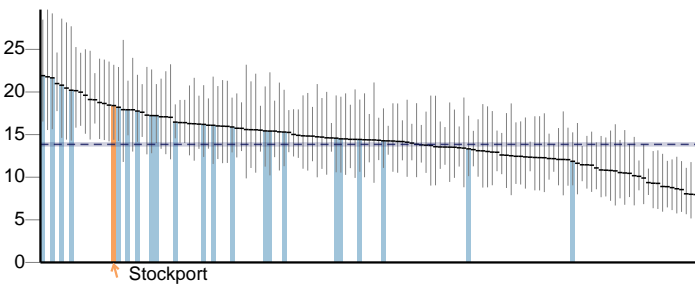
4.09 - Excess under 75 mortality rate in adults with serious mental illness



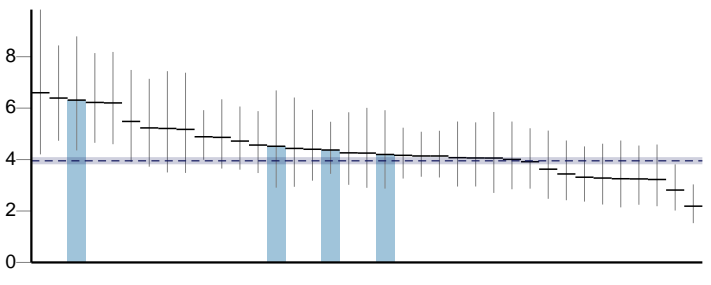
4.10 - Suicide rate (Persons)



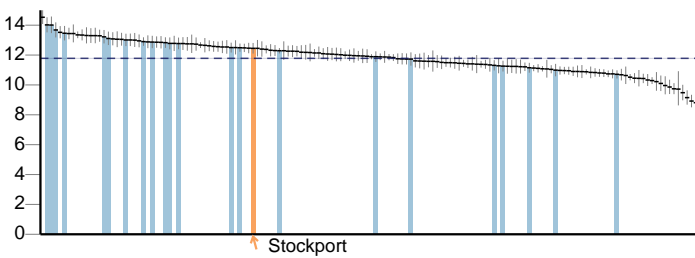
4.10 - Suicide rate (Male)



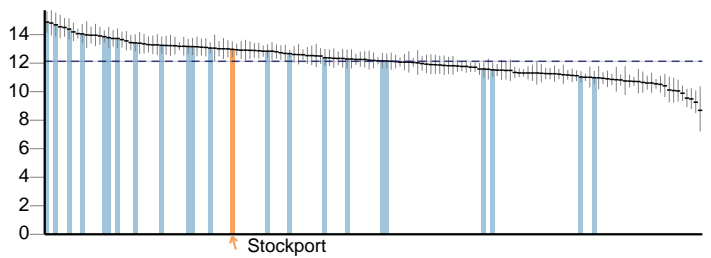
4.10 - Suicide rate (Female)



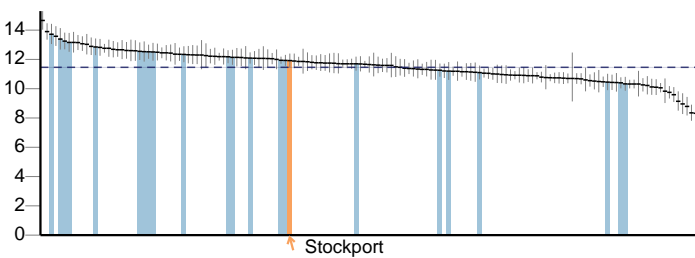
4.11 - Emergency readmissions within 30 days of discharge from hospital (Persons)



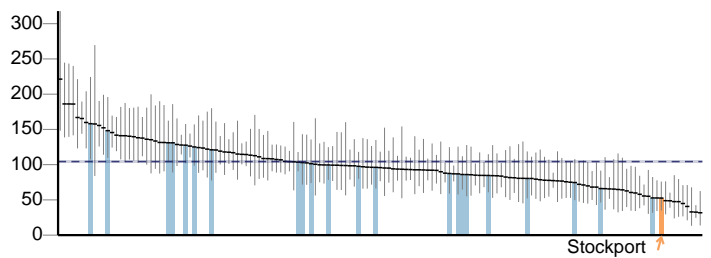
4.11 - Emergency readmissions within 30 days of discharge from hospital (Male)



4.11 - Emergency readmissions within 30 days of discharge from hospital (Female)



4.12i - Preventable sight loss - age related macular degeneration (AMD)

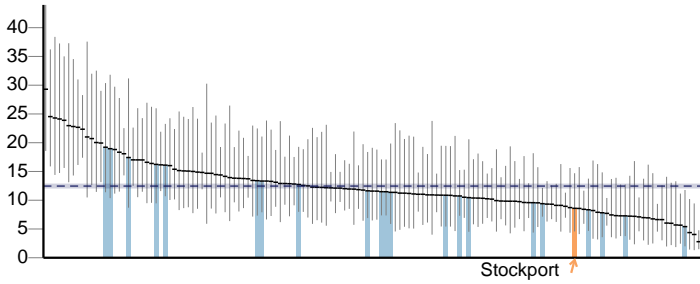


Key  England value and confidence interval ↑ Stockport  Other local authority in North West

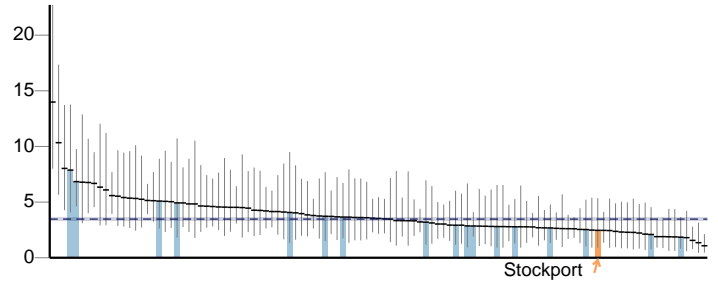
# Stockport

## Healthcare and premature mortality continued

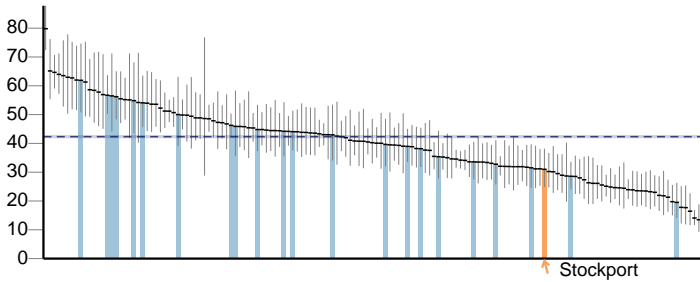
4.12ii - Preventable sight loss - glaucoma



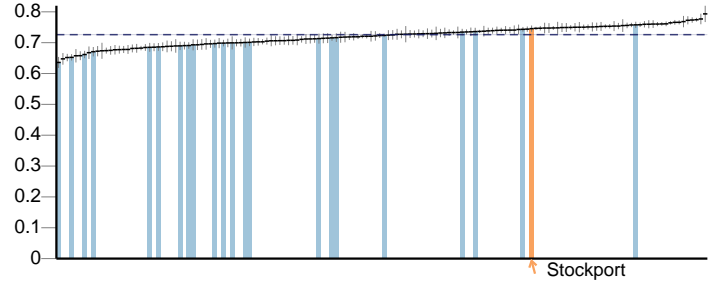
4.12iii - Preventable sight loss - diabetic eye disease



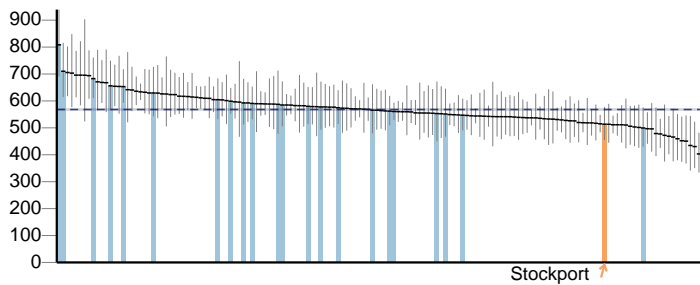
4.12iv - Preventable sight loss - sight loss certifications



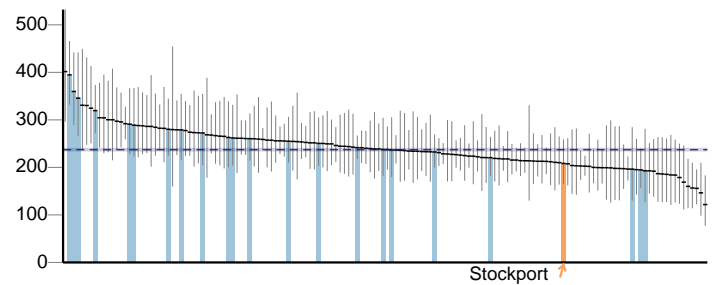
4.13 - Health related quality of life for older people



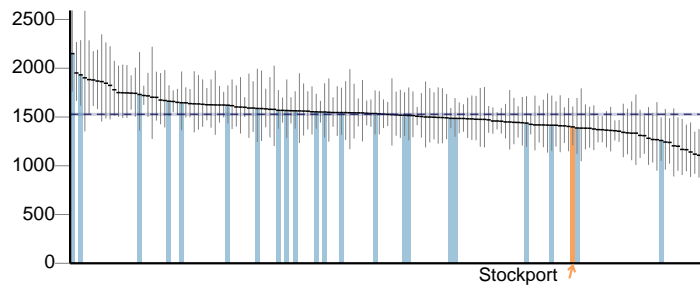
4.14i - Hip fractures in people aged 65 and over



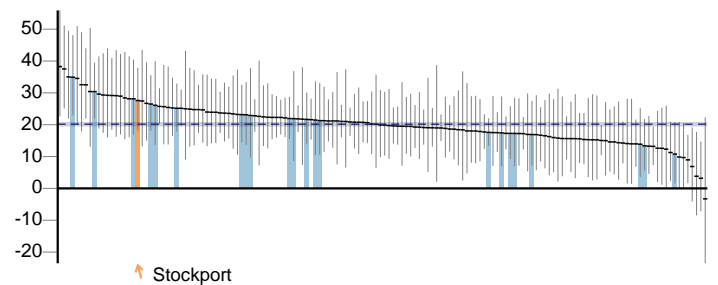
4.14ii - Hip fractures in people aged 65 and over - aged 65-79



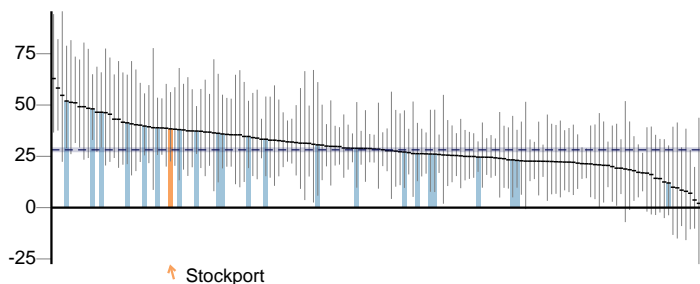
4.14iii - Hip fractures in people aged 65 and over - aged 80+



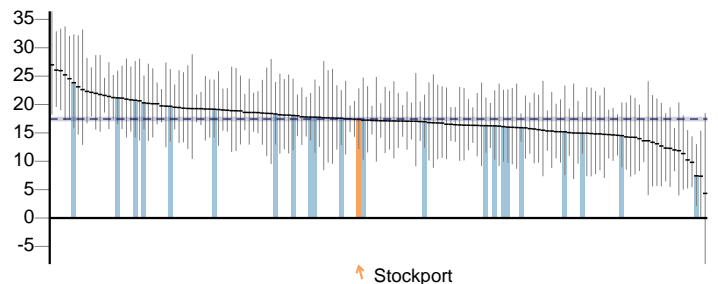
4.15i - Excess Winter Deaths Index (Single year, all ages)



4.15ii - Excess Winter Deaths Index (single year, ages 85+)



4.15iii - Excess Winter Deaths Index (3 years, all ages)



Key  England value and confidence interval ↑ Stockport  Other local authority in North West

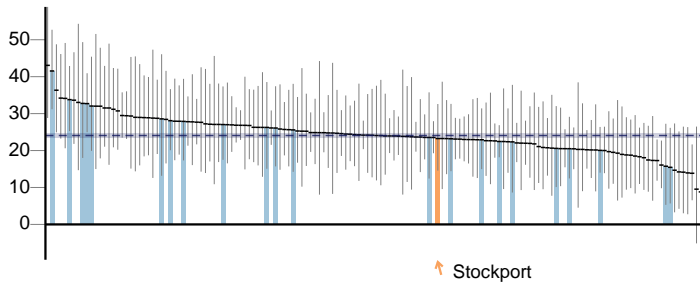


## Healthcare and premature mortality continued

4.15iv - Excess Winter Deaths Index (3 years, ages 85+)

4.16 - Estimated diagnosis rate for people with dementia

No data



Key     England value and confidence interval    ↑ Stockport      Other local authority in North West

# Definitions

## Overarching indicators

**0.1i** Healthy life expectancy at birth: the average number of years a person would expect to live in good health based on contemporary mortality rates and prevalence of self-reported good health. **0.1ii** Life expectancy at birth: the average number of years a person would expect to live based on contemporary mortality rates. **0.1ii** Life expectancy at 65: the average number of years a person would expect to live based on contemporary mortality rates. **0.2i** Slope index of inequality in life expectancy at birth based on national deprivation deciles within England: the range in years of life expectancy across the social gradient, from most to least deprived. **0.2ii** Number of upper tier local authorities for which the local slope index of inequality in life expectancy (as defined in indicator 0.2iii) has decreased. **0.2iii** Slope index of inequality in life expectancy at birth within English local authorities, based on local deprivation deciles: the range in years of life expectancy across the social gradient within each local authority, from most to least deprived. **0.2iv** The gap in years between overall life expectancy at birth in each English local authority and life expectancy at birth for England as a whole. **0.2v** Slope index of inequality in healthy life expectancy at birth based on national deprivation deciles within England: the range in years of life expectancy across the social gradient, from most to least deprived. **0.2vii** Slope index of inequality in life expectancy at birth within English region, based on regional deprivation deciles: the range in years of life expectancy across the social gradient within each local authority, from most to least deprived.

## Wider determinants of health

**1.01i** Percentage of all dependent children under 20 in relative poverty (living in households where income is less than 60 per cent of median household income before housing costs) **1.01ii** % of children in low income families (children living in families in receipt of out of work benefits or tax credits where their reported income is < 60% median income) for u-16s only **1.02i** School Readiness: All children achieving a good level of development at the end of reception as a percentage of all eligible children. **1.02ii** School Readiness: All children achieving a good level of development at the end of reception as a percentage of all eligible children by free school meal status **1.02iii** School Readiness: Year 1 pupils achieving the expected level in the phonics screening check as a percentage of all eligible pupils **1.02iv** School Readiness: The percentage of Year 1 pupils with free school meal status achieving the expected level in the phonics screening check **1.03** % of half days missed by pupils due to overall absence (incl. authorised and unauthorised absence) **1.04** Rate of 10-17 year olds receiving their first reprimand, warning or conviction per 100,000 population **1.05** % of 16-18 year olds not in education, employment or training (NEET) **1.06i** % of adults with a learning disability who are known to the council, who are recorded as living in their own home or with their family **1.06ii** % of adults (age 18-69) who are receiving secondary mental health services on the Care Programme Approach recorded as living independently, with or without support. **1.07** People in prison who have a mental illness or a significant mental illness **1.08i** % point gap in the employment rate between those with a long-term health condition and the overall employment rate **1.08ii** % point gap in the employment rate between those with a learning disability and the overall employment rate **1.08iii** The percentage point gap between the percentage of working age adults who are receiving secondary mental health services and who are on the Care Programme Approach recorded as being employed (aged 18 to 69) and the percentage of all respondents in the Labour Force Survey classed as employed (aged 16 to 64) **1.09i** % of employees who had at least one day off due to sickness absence in the previous working week **1.09ii** % of working days lost due to sickness absence in the previous working week **1.10** Rate of people KSI on the roads, all ages, per 100,000 resident population **1.11** Rate of domestic abuse incidents recorded by the police per 1,000 population **1.12i** Age-standardised rate of emergency hospital admissions for violence per 100,000 population **1.12ii** Crude rate of violence against the person offences per 1,000 population **1.12iii** Crude rate of sexual offences per 1,000 population **1.13i** % of offenders who re-offend from a rolling 12 month cohort **1.13ii** Average no. of re-offences committed per offender from a rolling 12 month cohort **1.14i** Rate of complaints per year per LA about noise per thousand population **1.14ii** The percentage of the population exposed to road, rail and air transport noise of 65 dB(A) or more, LAeq,16h per local authority (16h is the period 0700 – 2300) according to the results of the strategic noise mapping carried out as required by the Environmental Noise (England) Regulations 2006, as amended. **1.14iii** The percentage of the population exposed to road, rail and air transport noise of 55 dB(A) or more, Ln16h (LAeq,8h) per local authority (8h is the period 2300 – 0700) according to the results of the strategic noise mapping carried out as required by the Environmental Noise (England) Regulations 2006, as amended. **1.15i** Homelessness acceptances per 1,000 households **1.15ii** Households in temporary accommodation per 1,000 households **1.16** % of people using outdoor space for exercise/health reasons **1.17** The percentage of households that experience fuel poverty based on the "Low income, high cost" methodology **1.18i** % of adult social care users who have as much social contact as they would like according to the Adult Social Care Users Survey **1.18ii** The percentage of adult carers who have as much social contact as they would like according to the Personal Social Services Carers survey **1.19i** % of adults aged 65+ who felt very safe or fairly safe walking alone in their local area during the day **1.19ii** % of adults aged 65+ who felt very safe or fairly safe walking alone in their local area after dark **1.19iii** % of adults aged 65+ who felt very safe or fairly safe alone in their own home at night

## Health improvement

**2.01** % of all live births at term with low birth weight **2.02i** % of all mothers who breastfed their babies in the first 48hrs after delivery **2.02ii** % of all infants due a 6-8 week check that are totally or partially breastfed **2.03** % of women who smoke at time of delivery **2.04** Rate of conceptions per 1,000 females aged 15-17 **2.04** Rate of conceptions per 1,000 females aged 13-15 **2.06i** % of children aged 4-5 classified as overweight or obese **2.06ii** % of children aged 10-11 classified as overweight or obese **2.07i** Rate of hospital admissions caused by unintentional and deliberate injuries in children aged 0-14 years per 10,000 resident population **2.07ii** Rate of hospital admissions caused by unintentional and deliberate injuries in young people aged 15-24 per 10,000 resident population **2.08** Average difficulties score for all looked after children aged 5-16 who have been in care for at least 12 months on 31st March **2.09i** Smoking prevalence age 15 years - regular smokers **2.09ii** Smoking prevalence age 15 years - occasional smokers **2.12** Percentage of adults classified as overweight or obese **2.13i** Percentage of adults achieving at least 150 minutes of physical activity per week in accordance with UK Chief Medical Officer (CMO) recommended guidelines on physical activity. **2.13ii** The percentage of adults classified as "inactive" **2.14** Prevalence of smoking among persons aged 18 years and over **2.14** Prevalence of smoking among persons aged 18 years and over - routine and manual **2.15i** % of opiate drug users that left drug treatment successfully who do not re-present to treatment within 6 months **2.15ii** % of non-opiate drug users that left treatment successfully who do not re-present to treatment within 6 months **2.16** Proportion of people assessed for substance dependence issues when entering prison who then required structured treatment and have not already received it in the community **2.17** % of QOF-recorded cases of diabetes registered with GP practices aged 17+ **2.18** Alcohol related admissions to hospital - narrow definition **2.19** The proportion of invasive malignancies of breast, prostate, colorectal, lung, bladder, kidney, ovary and uterus, non-Hodgkin lymphomas, and melanomas of skin, diagnosed at stage 1 or 2 **2.20i** % of eligible women screened adequately within the previous 3 years on 31st March **2.20ii** % of eligible women screened adequately within the previous 3.5 or 5.5 years (according to age) on 31st March **2.21i** % of pregnant women eligible for infectious disease screening who are tested for HIV **2.21ii** % of pregnant women eligible for antenatal sickle cell and thalassaemia screening who were screened **2.21iv** % of babies eligible for newborn blood spot screening who were screened **2.21v** % of babies eligible for newborn hearing screening for whom screening process is complete within 4 weeks **2.21vii** % of those offered diabetic eye screening who attend a digital screening event **2.21viii** % of men eligible for abdominal aortic aneurysm screening who had an initial offer of screening **2.22iii** Cumulative percentage of the eligible population aged 40-74 offered an NHS Health Check in the five year period 2013/14 - 2017/18 **2.22iv** Cumulative percentage of eligible population aged 40-74 offered an NHS Health Check who received an NHS Health Check in the five year period 2013/14 - 2017/18 **2.22v** Cumulative percentage of eligible population aged 40-74 who received an NHS Health Check in the five year period 2013/14 - 2017/18 **2.23i** % of respondents scoring 0-4 to the question "Overall, how satisfied are you with your life nowadays?" **2.23ii** % of respondents scoring 0-4 to the question "Overall, to what extent do you feel the things you do in your life are worthwhile?" **2.23iii** % of respondents scoring 0-4 to the question "Overall, how happy did you feel yesterday?" **2.23iv** % of respondents scoring 6-10 to the question "Overall, how anxious did you feel yesterday?" **2.23v** Average Warwick-Edinburgh Mental Well-Being Scale (WEMWBS) score for adults aged 16+ **2.24i** Age-sex standardised rate of emergency hospital admissions for injuries due to falls in persons aged 65+ per 100,000 population **2.24ii** Age standardised rate of emergency hospital admissions for injuries due to falls in persons aged 65-79 per 100,000 population **2.24iii** Age-sex standardised rate of emergency hospital admissions for injuries due to falls in persons aged 80+ per 100,000 population

## Health protection

**3.01** Fraction of all-cause adult mortality attributable to anthropogenic particulate air pollution (measured as fine particulate matter, PM2.5) **3.02i** Crude rate of chlamydia detection per 100,000 young adults aged 15-24 using old National Chlamydia Screening Programme (NCSP) data

3.02ii Crude rate of chlamydia detection per 100,000 young adults aged 15-24 using CTAD data 3.03i % of eligible children who received 4 doses of Hepatitis B vaccine at any time by their 1st birthday 3.03j % of eligible children who received 4 doses of Hepatitis B vaccine at any time by their 2nd birthday 3.03iii % of eligible children who received 3 doses of Dtap / IPV / Hib vaccine at any time by their 1st birthday 3.03iiii % of eligible children who received 3 doses of Dtap / IPV / Hib vaccine at any time by their 2nd birthday 3.03iv % of eligible children who have received the completed course of Men C vaccine by their 1st birthday 3.03v % of eligible children who have received the complete course of PCV vaccine by their 1st birthday 3.03vi % of eligible children who have received one booster dose of Hib/Men C vaccine by their 2nd birthday 3.03vii % of eligible children who have received one booster dose of Hib/Men C vaccine by their 5th birthday 3.03viii % of eligible children who have received one dose of MMR vaccine on or after their 1st birthday and anytime up to their 2nd birthday 3.03ix % of eligible children who have received one dose of MMR vaccine on or after their 1st birthday and at any time up to their 5th birthday 3.03x % of eligible children who have received two doses of MMR vaccine on or after their 1st birthday and at any time up to their 5th birthday 3.03xi % of girls aged 12-13 who have received all 3 doses of the HPV vaccine 3.03xii % of eligible adults aged 65+ who have received the PPV vaccine 3.03xiii % of eligible adults aged 65+ who have received the flu vaccine 3.03xiv % of at risk individuals aged 6 months to 65 years (excluding pregnant women) who have received the flu vaccine 3.04 % of adults (aged 15+) newly diagnosed with HIV with a CD4 count 3.05i % of people completing treatment for TB within 12 months prior to 31st December 3.05ii Rate of reported new cases of TB per year per 100,000 population 3.06 % of NHS organisations that have a Sustainable Development Management Plan that has been signed off at Board level 3.07 Comprehensive, agreed inter-agency plans for responding to health protection incidents and emergencies

## Healthcare and premature mortality

4.01 Rate of deaths in infants aged under 1 year per 1,000 live births 4.02 Mean severity of tooth decay in children aged five years based on the mean number of teeth per child sampled which were either actively decayed or had been filled or extracted – decayed/missing/filled teeth (d<sub>3</sub>mft) 4.03 Age-standardised rate of mortality from causes considered preventable per 100,000 population 4.04i Age-standardised rate of mortality from all cardiovascular diseases (including heart disease and stroke) in persons less than 75 years of age per 100,000 population 4.04ii Age-standardised rate of mortality considered preventable from all cardiovascular diseases (incl. heart disease and stroke) in those aged 4.05i Age-standardised rate of mortality from all cancers in persons less than 75 years of age per 100,000 population 4.05ii Age-standardised rate of mortality considered preventable from all cancers in those aged 4.06i Age-standardised rate of mortality from liver disease in persons less than 75 years of age per 100,000 population 4.06ii Age-standardised rate of mortality considered preventable from liver disease in those aged 4.07i Age-standardised rate of mortality from respiratory disease in persons less than 75 years per 100,000 population 4.07ii Age-standardised rate of mortality considered preventable from respiratory disease in those aged 4.08 Age-standardised rate of mortality from communicable diseases per 100,000 population 4.09 Excess under 75 mortality rate in adults with serious mental illness 4.10 Age-standardised mortality rate from suicide and injury of undetermined intent per 100,000 population 4.11 Indirectly standardised % of emergency admissions to any hospital within 30 days of the previous discharge from hospital 4.12i Crude rate of sight loss due to age related macular degeneration (AMD) in those aged 65+ per 100,000 population 4.12ii Crude rate of sight loss due to glaucoma in those aged 40+ per 100,000 population 4.12iii Crude rate of sight loss due to diabetic eye disease in those aged 12+ per 100,000 population 4.12iv Crude rate of sight loss certifications per 100,000 population 4.13 Average health status score for adults aged 65 and over 4.14i Age-sex standardised rate of emergency admissions for fractured neck of femur in those aged 65+ per 100,000 population 4.14ii Age-sex standardised rate of emergency admissions for fractured neck of femur in those aged 65-79 per 100,000 population 4.14iii Age-sex standardised rate of emergency admissions for fractured neck of femur in those aged 80+ per 100,000 population 4.15i Excess Winter Deaths Index (Single year, all ages) 4.15ii Excess Winter Deaths Index (single year, age 85+) 4.15iii Excess Winter Deaths Index (3 years, all ages) 4.15iv Excess Winter Deaths Index (3 years, age 85+) 4.16 Estimated diagnosis rate for people with dementia